



ADDENDUM NO. 2

ISSUE DATE:

April 4, 2025

FROM:

Charter Construction Services, Inc.
2801-C Nash St N.
Wilson, NC 27896
Ph: 252-265-0035
Fax: 252-265-0036
Email: Monica@TheCharterCompanies.com

PROJECT:

WCS Office Training Facility
2764 Commerce Rd
Wilson, NC 27893

BID OPENING:

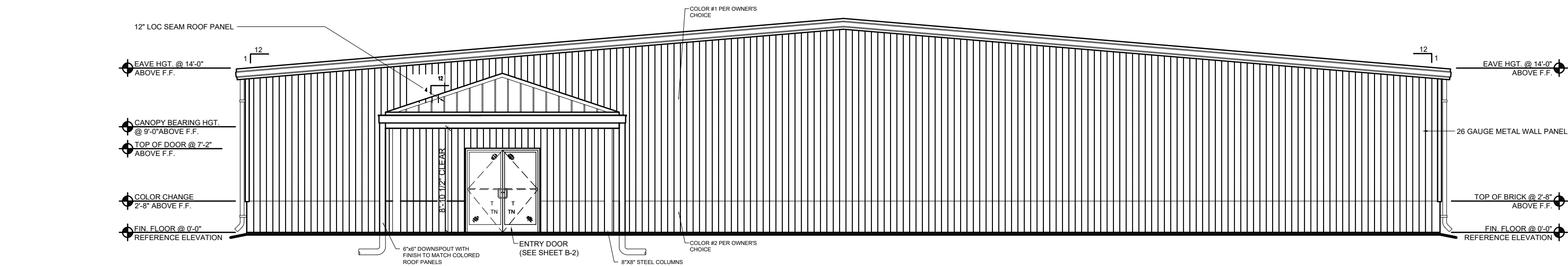
2:00pm on April 22, 2025

BID OPENING LOCATION:

Wilson County Government Center
2201 Miller Road South,
Wilson, NC 27896

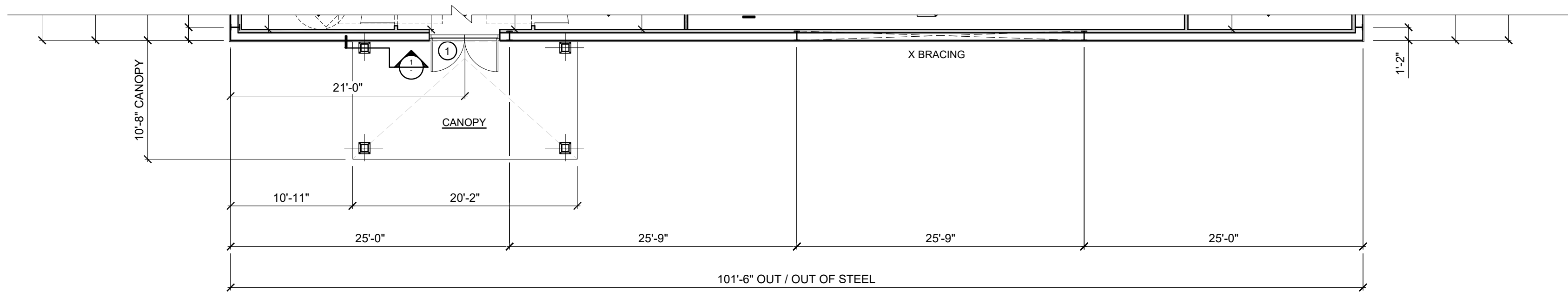
This addendum becomes a part of the Bid and Contract Documents and modifies the original Bid Documents dated 02-28-2025 and Original Plans dated 02-07-2025, as noted below. Acknowledge receipt of this Addendum by inserting the number and issue date of this addendum in the blank space provided on the Bid Form. Failure to do so may subject the Bidder to disqualification.

- 1 – Bid Opening postponed to April 22, 2025, at 2:00 PM. Location remains the same.
- 2 – Sheet B-1A – Dated 04-04-2025
- 3 – Alternates – Issued 04-04-2025
- 4 – RFI Log – Dated 04-04-2025
- 5 – Plumbing Accessories, Referenced in RFI #11
- 6 – Dumpster Front Detail, Referenced in RFI #34
- 7 – Pole Base Detail, Referenced in RFI #44
- 8 – Bid Form, Referenced in RFI #40



ALTERNATIVE FRONT ELEVATION

SCALE: 1/8"= 1'-0"



ALTERNATE FLOOR PLAN

BUSINESS AREAS 5095 SQ. FT. + STORAGE AREAS 7,519 SQ. FT. + PORCH & SHELTER 692 SQ. FT. TOTAL SQ. FT. = 13,306

SCALE: 1/8"= 1'-0"

GENERAL NOTES

EXTERIOR FINISHES:

METAL WALL PANEL: 26 GA. AMERICAN BUILDING COMPANY REVERSE R PANEL OR EQUAL
PRIMED AND PAINTED IN TWO COLORS PER OWNER CHOICE.

METAL ROOF PANEL: 24 GA. 12" STANDING SEAM

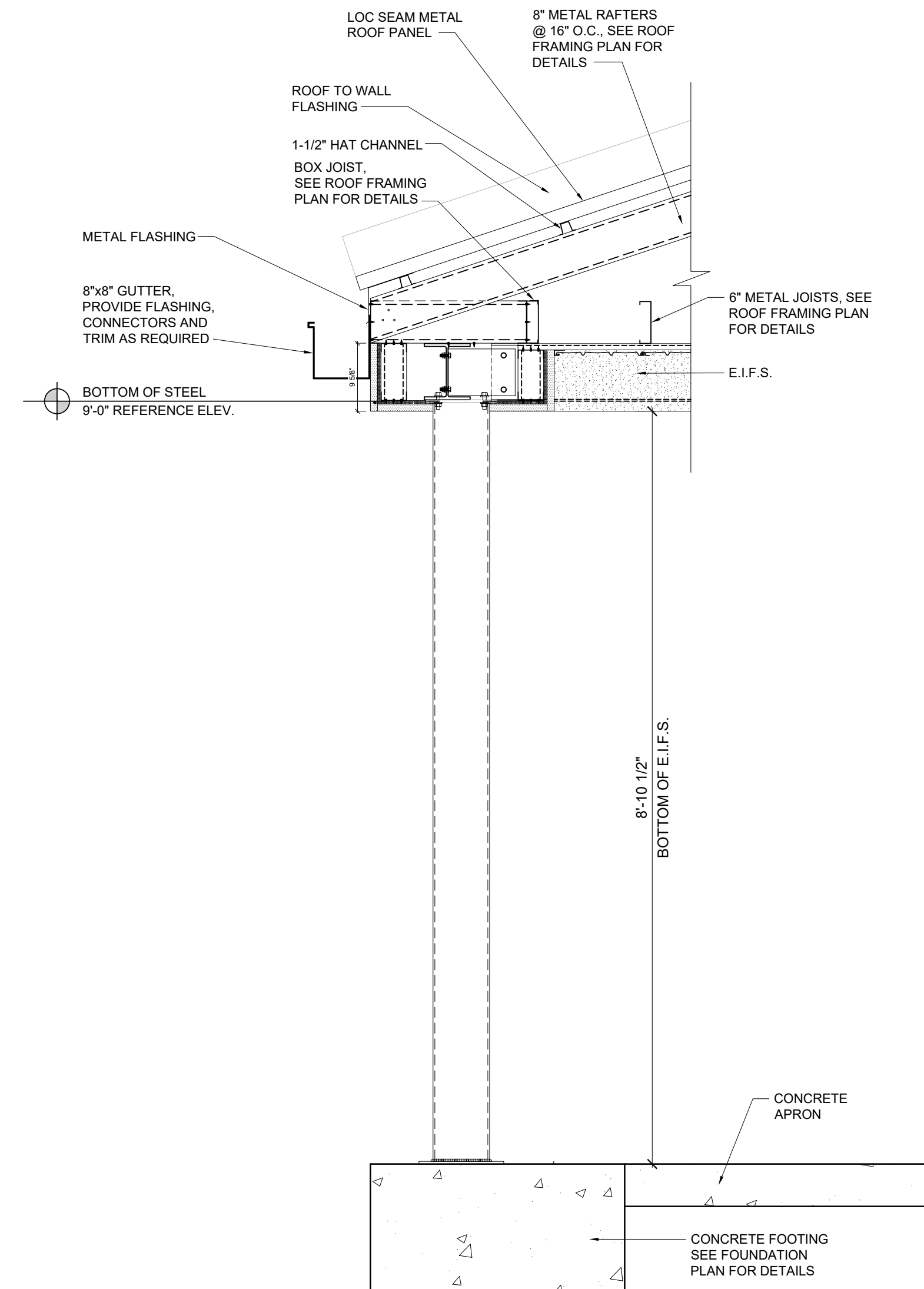
METAL TRIM: COLOR TO MATCH WALL PANEL

OVHD DOOR AND FRAME: PAINT DARK BRONZE

HOLLOW METAL DOORS AND FRAMES: PRIMED AND PAINTED, "BENJAMIN MOORE" SEMI-GLOSS
COLOR: DARK BRONZE

WALL LEGEND

SYMBOL	DESCRIPTION
	12" CMU BLOCK WALL w/ GROUT FILLED CELLS TO 12'-8" A.F.F.
	2 HR. RATED, 12" CMU BLOCK WALL w/ GROUT FILLED CELLS TO ROOF DECKING
	METAL BUILDING WALL 8" GIRT DEPTH, 1-1/2" EXTERIOR WALL PANEL
	LIGHT GAUGE METAL STUDS @ 16" O.C. SEE SH. S-2 FOR STUD SIZES AND HEIGHTS
	LIGHT GAUGE METAL STUDS @ 16" O.C. SEE SH. S-2 FOR STUD SIZES AND HEIGHTS
	LIGHT GAUGE METAL STUDS @ 16" O.C., FRAMED TO UNDERSIDE OF ROOF DECK ABOVE, SEE SH. S-2 FOR STUD SIZES
	PLUMBING WALL LIGHT GAUGE METAL STUDS @ 16" O.C. SEE SH. S-2 FOR STUD SIZES AND HEIGHTS



1 SECTION
B-1 COLUMN DETAIL

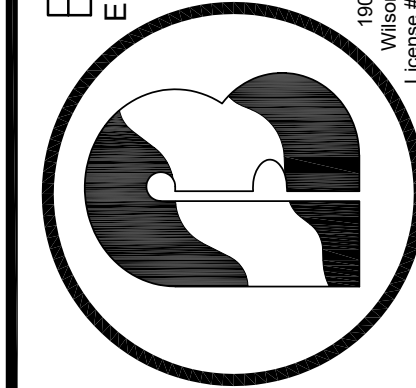
SCALE: 3/4" = 1'-0"

PRELIMINARY - NOT FOR CONSTRUCTION

Owner:

Wilson County Sheriff's Office
PO Box 1666 100 E. Green St. Wilson, NC
Office 252.237.2118 Fax 252.399.2871

BARTLETT
ENGINEERING & SURVEYING, PC



V. 252.166.0034
F. 252.399.2871
www.bartletteng.com

Wilson County Sheriff's Office
2764 Commerce Road Wilson, NC 27893
License # C-1051

PE Seal

Rev: Date: Description:

Title Sheet: ALT. FLOOR PLAN / SCHEDULES /
NOTES/DETAIL

Project: Wilson County Sheriff's Office
Training Facility
2764 Commerce Road Wilson, NC 27893

Drawn by: PADEN R.
Issue Date: 04/04/2025
Project Number: 24-102
Sheet:

B-1A

SECTION 012300 - ALTERNATES

PART 1 - GENERAL

1.1 SUMMARY

- A. Section includes administrative and procedural requirements for alternates.

1.2 DEFINITIONS

- A. Alternate: An amount proposed by bidders and stated on the Bid Form for certain work defined in the bidding requirements that may be added to or deducted from the base bid amount if the Owner decides to accept a corresponding change either in the amount of construction to be completed or in the products, materials, equipment, systems, or installation methods described in the Contract Documents.
 - 1. Alternates described in this Section are part of the Work only if enumerated in the Agreement.
 - 2. The cost or credit for each alternate is the net addition to or deduction from the Contract Sum to incorporate alternates into the Work. No other adjustments are made to the Contract Sum.

1.3 PROCEDURES

- A. Coordination: Revise or adjust affected adjacent work as necessary to completely integrate work of the alternate into Project.
 - 1. Include, as part of each alternate, miscellaneous devices, accessory objects, and similar items incidental to or required for a complete installation, whether or not indicated as part of alternate.
- B. Execute accepted alternates under the same conditions as other Work of the Contract.
- C. Schedule: A Part 3 "Schedule of Alternates" Article is included at the end of this Section. Specification Sections referenced in schedule contain requirements for materials necessary to achieve the work described under each alternate.

PART 2 - PRODUCTS (Not Used)

PART 3 - EXECUTION

3.1 SCHEDULE OF ALTERNATES

- A. Alternate No. 1: Outdoor Gun Range Improvements as per SP6
- B. Alternate No. 2: Water Search & Rescue Training Access Improvements as per SP6A
- C. Alternate No. 3: Floating Aerator/Fountain
- D. Alternate No. 4: Deduct to modify building façade to remove all brick from façade and keep metal, refer to B-1A

END OF SECTION 012300

April 4, 2025

RFI #	QUESTION	ANSWER
1	Can you clarify what the warranty duration will be on this one? I can't find that spelled out anywhere in the specs. I know it likely 1 year as that is standard, but my boss makes me get that in writing on every project. Thanks	1 year GC warranty
2	Suggest extending project to 365 days.	The time of completion will remain at 270 days.
3	Light fixture schedule shows flagpole light(s), only drawings that show flagpole are on SP3 civil drawings. How many flag pole lights should be included?	1 flag pole light in based bid for exsiting front flag pole. 1 flag pole light in alternate bid for existing gun range flag pole.
4	SP3 shows Wilson Co Sheriff Training Facility sign, however, no circuitry shown on panel schedule for sign. Is it powered or non powered?	Sheet E-2 shows future conduits only. This should be coordinated with the owner
5	Is the power for the gate controller to be in electrical bid? It's not shown in electrical panels or electrical drawings.	Gate is already powered.
6	Who is responsible for the site lighting? Only shown on SP3 drawing. Is there a spec on light fixtures? Base base detail? Controls of pole lights? 4 in base bid and states, 6 typical locations, where are the 2 alternate locations?	The site lighting is fed from the building electrical panels. See site plan for quantity and details. See SP6 and SP6A for 2 additional (alternatate) light pole locations.
7	Are front Flag pole & Sign to remain and lights be added? If so, how many lights?	1 flag pole light in based bid for exsiting front flag pole. 1 flag pole light in alternate bid for existing gun range flag pole.
8	Existing Gate to remain as is?	The gate will remain and the GC will be provided FOB access.
9	Who is responsible for the electrical feed from the transformer to the CT cabinet?	Typically the power company brings feeder u.g. to CT. This should also be coordinated with the power company

10	Will owner provide testing or do we as GC have to provide? If by GC, what testing is required? Thanks	Owner will contract testing through third party, GC to coordinate.
11	Spec for plumbing accessories on plan: FCO FLOOR CLEANOUT COAG EXTERIOR CLEANOUT WCO WALL CLEANOUT FD FLOOR DRAIN IMB ICE MAKER BOX HB INTERIOR HOSE BIB NFHB FROSTPROOF HOSE BIB	See attached "Plumbing Assessories"
12	Is the prebid meeting mandatory?	No, it is not mandatory.
13	In reviewing the plans for the Wilson County Sheriff's Office, both the Architectural & Structural notes call for CMU with "Grout Filled Cells". I just wanted to be sure that the intent is too have all of the CMU Grouted Solid – as there would be a substantial cost difference if Grout is only required at the Rebar Cells only.	All CMU to be grouted solid
14	Is Vulcan Steel Structures an approved vendor?	Yes
15	Who is responsible for permit fees?	GC is responsible for permit fees.
16	Will the city be relocating the primary line?	Wilson Energy will relocate primary at no charge.
17	Is there a gun range upfit in this project?	No
18	The specs call for a chain operated coiling overhead door and sheet B-2 says it is an electric operated door. Which one gets priced?	Electric operated. Add 20 amp circuit breaker and wire for door operator.

19	Does the range area need to be topsoil respread? this would then need to be striped in order to preserve the original elevations seeing the plans do not have contours on them.	The earth work at the gun range involves adding fill material to the existing berm. There will need to be enough topsoil added to the disturbed area to facilitate vegetation.
20	Plans do not provide details for the install of the boat ramp and how to dewater it. What is plan for doing this?	The plans do not direct the means and methods for constructing the boat ramp. The contractor shall determine how to install the ramp to provide the final product.
21	Plans do not provide tree protection where the clearing is to be performed , Do you want to me put in our base bid or alternate? this same area is a fill and no silt fence shown either, do you want us to price it up or alternate it?	Tree protection fencing is only required if indicated on the plans. Although tree protection fencing is referenced in the construction sequence there is no tree protection fencing shown on the plans are required. Silt fence shown on SP5 should be included in the base bid. Silt Fence shown on SP6 should be included in the gun range alternate bid.
22	Need plan reflecting the location and material type from building to 2" hose bid service this shown on SHEET # SP6 that is not shown on sheet SP 3	The alternate 2" PVC SDR-21 water service from the building to the boat ramp area will follow along the exiting access drive.
23	The target Berm: is just the back berm being thickened on? Can excess topsoil be utilized to widen the berm? we assumed this the case as firing into the rear berm is what appears to be the plan intent. Need confirmation.	Per section A-A, fill material is to be added to the front slope and top of the back berm. Excess material from on-site can be used provided the material is adequate to create a stable 1:1 slope.
24	Does the open structure in storage area get painted?	No
25	Does the CMU in storage area get painted?	No
26	Is there a reason this door has to be mounted on exterior of building? Exterior mounted doors are more expensive than interior mounted doors due to hood and motor covers.	Yes, due to gun range shielding on the interior.

Wilson County Sheriff's Office Training Facility
2764 Commerce Rd Wilson, NC 27893



27	Paragraph 2.2D1 calls for a baked enamel or powdercoat finish. Do they want the manufacturer's standard baked enamel available in gray, tan, and white or the optional powdercoat finish available in 180 color options?	Manufacturer's full range of color options.
29	Are the mirrors in the restroom framed?	Yes, Framed Mirrors in restrooms
30	No info provided for Wall Base in specs, but plans note base to be "Roppe #194 or Equal. Please note that #194 is the color, which is 194 Burnt Umber. Please advise BOD for Rubber Base and base size.	Wall base spec: Roppe 700 Series 4" height, color to be selected by owner.
31	BOD for ACT not provided. Only info provided in plans is "Armstrong R3407-Type XLD 2x2 Square Edge". This is not an Armstrong item number so unsure of what to price here. Specs do not provide any direction and do not align with what's shown in plans. Please advise on BOD for ACT.	Armstrong Ceiling Solutions, items # 1728AN: FINE FISSURED Edge Profile & Grid Size: Square Lay-In 15/16 Product dimensions: 24" x 24" x 5/8" Material: Mineral Fiber
32	BOD for LVT is shown in specs as "Mannington Walkway 20, 6"x36"; however, plans show "Philadelphia #00221". Please advise if we should price what's shown in Specs or Plans.	Mannington Walkway 20, 6"x36
33	What is the existing keying on this job?	No existing keying, GC to coordinate with owner for keying scheme
34	Are the dumpster gates fabricated out of tube steel for the gates with screen inlay or if the gates are constructed out of screen?	Refer to Dumpster Front Detail, attached separately
35	Also are the steel bollards to SCH 40 or SCH 80.	Schedule 40

	<p>I would like to suggest the following as I see no bond beam schedule for this project:</p> <p>Bond beams at top of masonry at joist bearing elevation for all 12"cmu walls at 12'8" at perimeter.</p> <p>Bond beams at 12'8" at demising wall of shop at joist, and a 2nd band of bond beams for the 8"cmu where bearing plate is at 17'</p> <p>Stepped Bond Beam at top of masonry sloped roof at north and south walls where roof shows to be slopped</p> <p>Bond Beams at headers for all door openings</p>	<p>12" bond beam to be continuous at 6' and at 12'-8" (joist bearing). 8" bond beam at 16'-8 with step as needed to follow roof slope at ends to sidewall.</p> <p>See header schedule S-2</p>
36		
37	<p>1.The Outdoor Firing Range that is shown on Plan Sheet SP6 and is possibly referenced on Plan Sheet E-2 does not clearly identify where the Electrical Power Service is to be located in order to serve the Pole Lights & Receptacles.</p> <p>a.Please confirm if the Wilson Energy Utility Company will provide a Utility Transformer for the EC to set a 100A Service Panel to serve the Outdoor Firing Range's power requirements (including future power requirements).</p>	<p>The pole light and receptacle for the outdoor shooting range shall be fed from the building electrical panel from 20 amp branch circuit P-33. The pole lights & receptacle is approximately 300 linear ft. away (+/-) with the load being 6.9 amps at the end of the run. The wire size shall be #8 in 1"C min. Direct burial wire is acceptable.</p> <p>Voltage drop calcs are based on 300 linear ft., 120V with a 0.9 power factor, copper wire and 6.9 amps at the end of the run = 2.53% VD.</p>
38	<p>2.The Outdoor Boat Ramp Area that is shown on Plan Sheet SP6A and is possibly referenced on Plan Sheet E-2 does not clearly identify where the Electrical Power Service is to be located in order to serve the Pole Lights & Receptacles.</p> <p>a.Please confirm if the Wilson Energy Utility Company will provide a Utility Transformer for the EC to set a 100A Service Panel to serve the Outdoor Boat Ramp Area's power requirements (including future power requirements).</p>	<p>The pole light, receptacle & boat ramp (remote water feature) shall be fed from the building electrical panel from 25 amp branch circuit HC-23,25. The boat ramp / pole light is approximately 1,100 linear ft. away (+/-) with the load being 16 amps at the end of the run. The wire size shall be 1/0 min in 2"C min.. Direct burial wire is acceptable.</p> <p>Voltage drop calcs are based on 1,100 linear ft., 208V with a 0.9 power factor, copper wire and 16 amps at the end of the run = 2.46% VD.</p>

39	<p>3.If the Outdoor Firing Range & Outdoor Boat Ramp Area's power service is supposed to come from the Training Center's Main Building through the noted conduits marked on Plan Sheet E-2, the listed conduits are not marked for the Outdoor Firing Range, nor for the Outdoor Boat Ramp. Also, the listed conduit sizes are too small to handle the distant voltage drop to the Outdoor Boat Ramp (approximately 1,040 – LNFT).</p> <p>a.Please provide the missing information on how the Outdoor Firing Range and the Outdoor Boat Ramp Areas are to receive their Electrical Power Services.</p>	Refer to answers to RFI questions 37 and 38
40	Plans indicate both (2) fountains as alternates, but there is no alternate on the bid form for the fountains.	See Addendum No. 2 for revised Bid Form
41	Where is electrical for the fountains fed from? Fountains are not shown on electrical sheets.	<p>Water Feature adjacent to main building - The water feature adjacent to the main building shall be fed from the building electrical panel from 25 amp branch circuit HC-19,21. The water feature controls are approximately 150 linear ft. away (+/-) with the load being 15 amps at the end of the run. The wire size shall be #8 min in 1"C min.. Direct burial wire is acceptable.</p> <p>Voltage drop calcs are based on: 150 linear ft., 208V with a 0.9 power factor, copper wire and 14 amps at the end of the run = 2.30% VD.</p>
42	Are fountains to be tethered to shore for future retrieval and/or maintenance?	Yes, mooring lines should be included in specified kit, GC to provide 400' cord length and control panel. GC is responsible for including all manufacturer requirements.
43	SP3 indicates six (6) total aluminum light poles. Both alternates indicate wooden poles. Please clarify.	Four aluminum light poles to be included in base bid, 2 wood poles to be included in alternate(s)

44	Question 06 in Addendum 01 asks for specs and details for site lighting. Answer was to see site plan for details. There are no details. Please clarify.	Refer to Pole Base Detail, attached separately
45	Aluminum-Framed Entrances & SF specs./ Part 2- Door shall be 1-3/4" thick F show doors to be Heavy Duty 2" overall thickness, and then on Sheet B-2/Door Types/Elevation 1 it shows 1-3/4" thickness. Does Door # 1 need to be 1-3/4" or 2" thickness? Please advise.	
46	Aluminum-Framed Entrances & Storefronts specs/ 084113-3/ Part F – Entrance Doors states the doors to be Wide Stile, however on Sheet B-2/Door Types/ Door 1 it shows "Narrow Stile". Please advise if Aluminum SF Doors need to be narrow or wide?	Narrow Stile
47	There are no glazing specs., however on Sheet B-2/ Window Types/ Elevations A & B it shows "Tinted" windows. What color tint windows do these need to be?	Basis of Design - 1" insulated unit - 1/4" Solarcool gray over Advantage 73 low-E
48	Sheet B-2/ Window Types/ Elevation "C" states Level 3 Bullet Resistant glass clear, who needs to provide this glass because there is not a specification, and it shows "Hollow Metal" as the framing system.	Basis of Design for bullet resistant glass and frame for window "C" -Ray-Bar Engineering Corporation, Fire-Rated Bullet Resistant Glass and Frame, Level 3, 90-minute rating.
49	Are MBE forms required	It is recommended to submit MBE forms, if applicable.
50	Is Phenix Construction Technologies an approved vendor?	Not Approved
51	There are (3) wall crosscuts that refers to detail 1 on B1 but I do not see a detail 1 on sheet B1. Please clarify	Refer to detail 3/B-4
52	Is Ascent Metal Building approved as an equal to the specified pre-engineered metal building	Approved

WCS SHERIFF'S TRAINING FACILITY

PLUMBING ACCESSORIES

Note: Contractor shall review model numbers with manufacture for availability and general ordering info prior to purchase and installation.

FCO FLOOR CLEANOUT:

ZURN "CO-2450" (or equal) Adjustable floor clean out with bronze plug

COAG EXTERIOR CLEANOUT:

ZURN "Z1400" (or equal) Adjustable Heavy-Duty clean out with bronze plug

WCO WALL CLEANOUT:

ZURN "Z1446" (or equal) wall clean out with bronze cover

FD FLOOR DRAIN:

ZURN "Z415B" (or equal) with trap primer connection bronze top.

IMB ICE MAKER BOX:

Oatey "MODA" ice maker supply box (or equal)

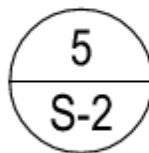
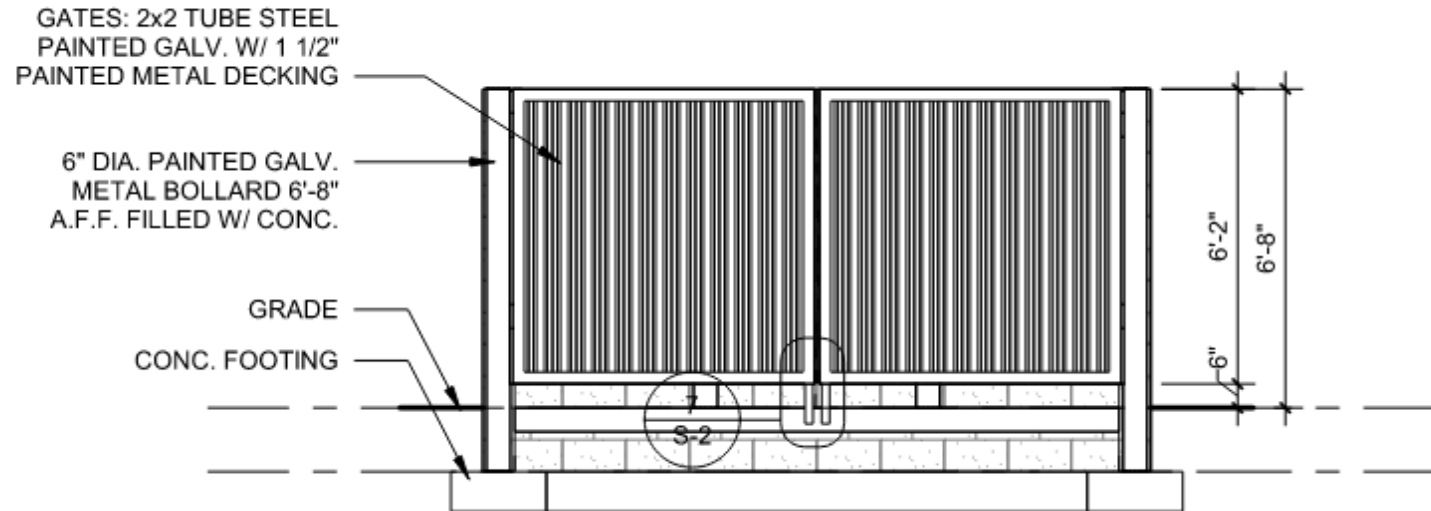
HB INTERIOR HOSE BIB:

Woodford "Model 74" (or equal) keyed wall hydrant with brass finish

NFHB FROSTPROOF HOSE BIB:

Woodford "Model 67" (or equal) keyed, freezeless wall hydrant with brass finish

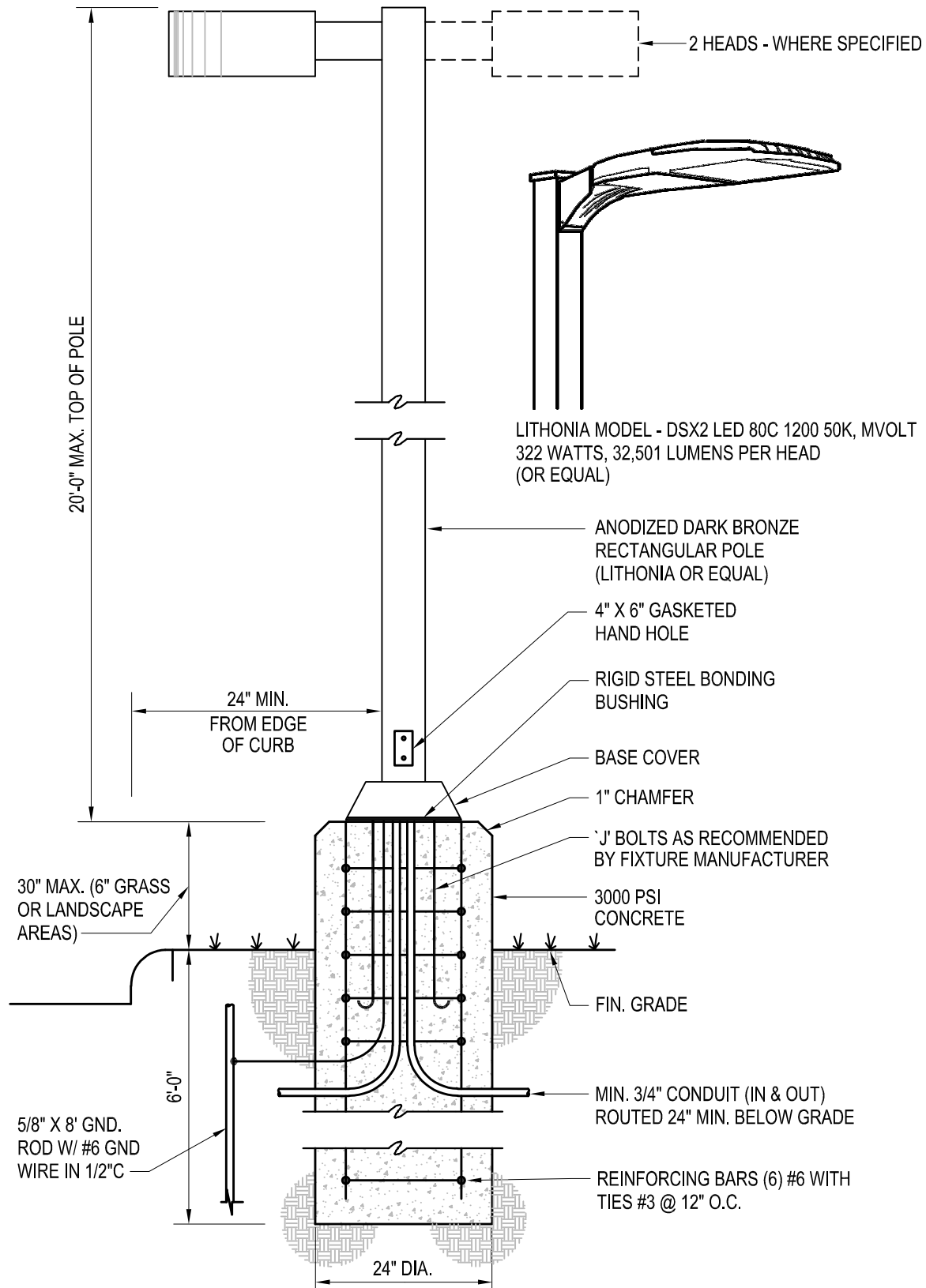
The following details are for reference to materials, general locations, and general dimensions. GC is responsible for coordinating dimensions and accurate widths/heights.



ELEVATION

DUMPSTER FRONT

SCALE: N.T.S.



DETAIL - LIGHT FIXTURE & POLE BASE

NO SCALE

NOTE: THIS DETAIL IS GENERIC FOR GENERAL GUIDANCE ONLY. POLE & LIGHT FIXTURE TO BE INSTALLED IN ACCORDANCE WITH MANUFACTURER'S INSTALLATION DETAILS. DO NOT VARY FROM THOSE INSTRUCTIONS IN ANY WAY.

DOCUMENT 004113 - BID FORM - STIPULATED SUM (SINGLE-PRIME CONTRACT)

PART 1 - GENERAL

1.1 BID INFORMATION

- A. Bidder: _____.
- B. Project Name: Wilson County Sheriff's Office Training Facility
- C. Project Location: 2764 Commerce Rd Wilson, NC 27893
- D. Owner: Wilson County Sheriff's Office
- E. Project Number: 24-102

1.2 CERTIFICATIONS AND BASE BID

- A. Base Bid, Single-Prime Contract: The undersigned Bidder, having carefully examined the Procurement and Contracting Requirements, Conditions of the Contract, Drawings, Specifications, and all subsequent Addenda, as prepared by Bartlett Engineering and Surveying, PC and consultants, having visited the site, and being familiar with all conditions and requirements of the Work, hereby agrees to furnish all material, labor, equipment and services, **including all scheduled allowances indicated in Section 012100 "Allowances"**, necessary to complete the construction of the above-named Project, in accordance with the requirements of the Procurement and Contracting Documents, for the stipulated sum of:

- 1. _____ Dollars
(\$_____).

1.3 UNIT PRICES

- A. The undersigned Bidder proposes the amounts below be added to or deducted from the Contract Sum on performance and measurement of the individual items of the Work, as described in Section 012200 "Unit Prices" **and if applicable for adjustment of the quantity given in the Unit-Price Allowance for the actual measurement of individual items of the Work.**

- B. Unit-Price No. 1: Removal and replacement of mass unsatisfactory soil

- 1. _____ dollars (\$_____) per unit.

C. Unit-Price No. 2: Removal and replacement of trench unsatisfactory soil

1. _____ dollars (\$ _____) per unit.

1.4 ALTERNATES

Alternate No. 1: Outdoor Gun Range Improvements

1. ADD / DEDUCT (circle one) - \$ _____.
_____ dollars

Alternate No. 2: Water Search & Rescue Training Access Improvements

2. ADD / DEDUCT (circle one) - \$ _____.
_____ dollars

Alternate No. 3: Floating Aerator/Fountain

3. ADD / DEDUCT (circle one) - \$ _____.
_____ dollars

Alternate No. 4: Modify Building Façade

4. ADD / DEDUCT (circle one) - \$ _____.
_____ dollars

1.5 BID SECURITY

- A. The undersigned Bidder agrees to execute a contract for this Work in the above amount and to furnish surety as specified within 10 days after a written Notice of Award, if offered within 60 days after receipt of bids, and on failure to do so agrees to forfeit to Owner the attached Bid Security, as liquidated damages for such failure as follows:

1. In the following amount constituting 5% of the Base Bid amount above:

- B. Form of Bid Security: Bidder has attached the following:

1. ☐ AIA Document A310-2010, "Bid Bond."
2. ☐ Certified check.

- C. In the event Owner does not offer Notice of Award within the time limits stated above,

Owner will return to the undersigned the cashier's check, certified check, or bid bond.

1.6 TIME OF COMPLETION

A. Time of Completion:

1. The undersigned Bidder proposes and agrees hereby to commence the Work of the Contract Documents on a date specified in a written Notice to Proceed to be issued by owner, and to substantially complete the Work within 270 calendar days.
2. Liquidated damages in the sum of \$200.00 for each consecutive calendar day after assigned completion date will be assessed to the contract holder.

1.7 ACKNOWLEDGMENT OF ADDENDA

A. The undersigned Bidder acknowledges receipt of and use of the following Addenda in the preparation of this Bid:

1. Addendum No. 1, dated _____.
2. Addendum No. 2, dated _____.
3. Addendum No. 3, dated _____.
4. Addendum No. 4, dated _____.

1.8 CONTRACTOR'S LICENSE

- A. The undersigned further states that it is a duly licensed contractor, for the type of work proposed, in Wilson NC, and that all fees, permits, etc., pursuant to submitting this proposal have been paid in full.

1.9 SUBMISSION OF BID

- A. Respectfully submitted this ____ day of _____, 2025.

- B. Submitted by: _____
(Name of bidding firm or corporation).

- C. Authorized Signature: _____
(Handwritten signature).

- D. Signed by: _____
(Type or print name).

- E. Title: _____
(Owner/Partner/President/Vice President).

- F. Street Address: _____.

- G. City, State, Zip: _____.
- H. Phone: _____.
- I. License No.: _____.
- J. Federal ID No.: _____.
- K. (Affix Corporate Seal Here)

END OF DOCUMENT 004113