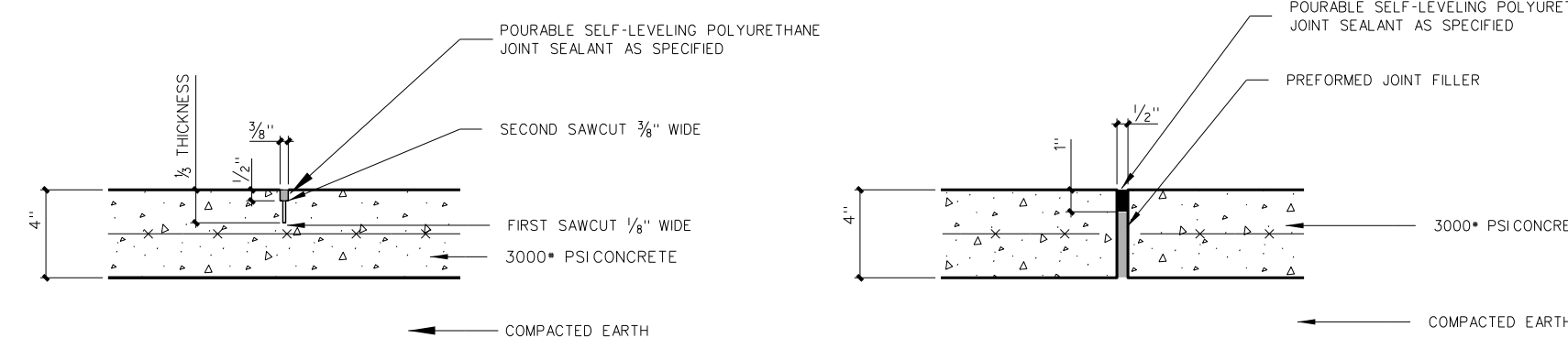


NOTE:  
PROVIDE SAWCUT JOINTS AT 10'-0" O.C. VERIFY LAYOUT WITH ARCHITECT.  
SAWCUT JOINTS MIN 1/2" SLAB THICKNESS NO MORE THAN 24 HOURS  
AFTER PLACEMENT SEE JOINT DETAILS. PROVIDE 1/2" EXPANSION JOINTS  
AS SPECIFIED. 30'-0" O.C. MAX. VERIFY LAYOUT WITH ARCHITECT

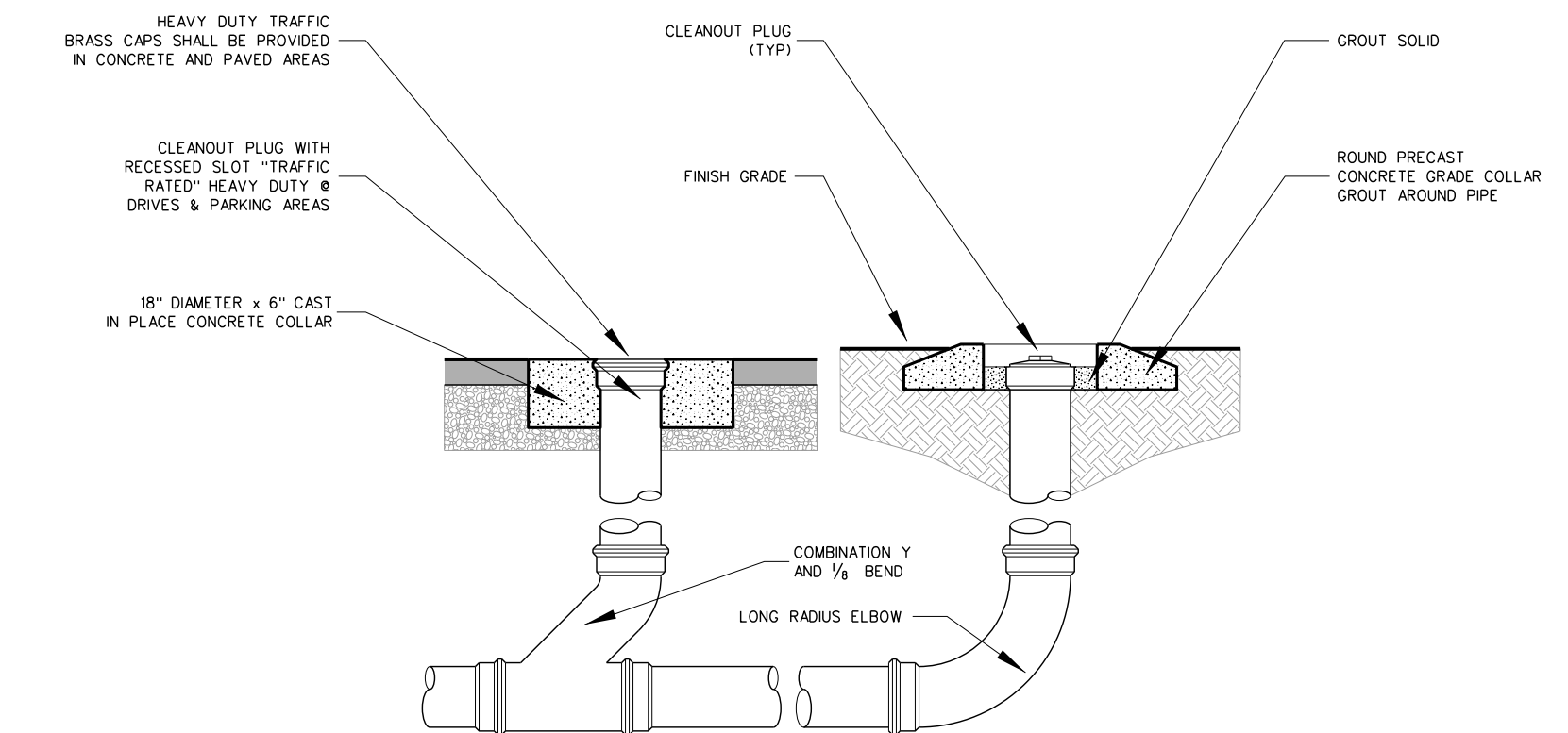
**101.5 LIGHT-DUTY CONCRETE SLAB**  
SCALE: 3/4" = 1'-0"



(Joints not to exceed 5' o.c.)

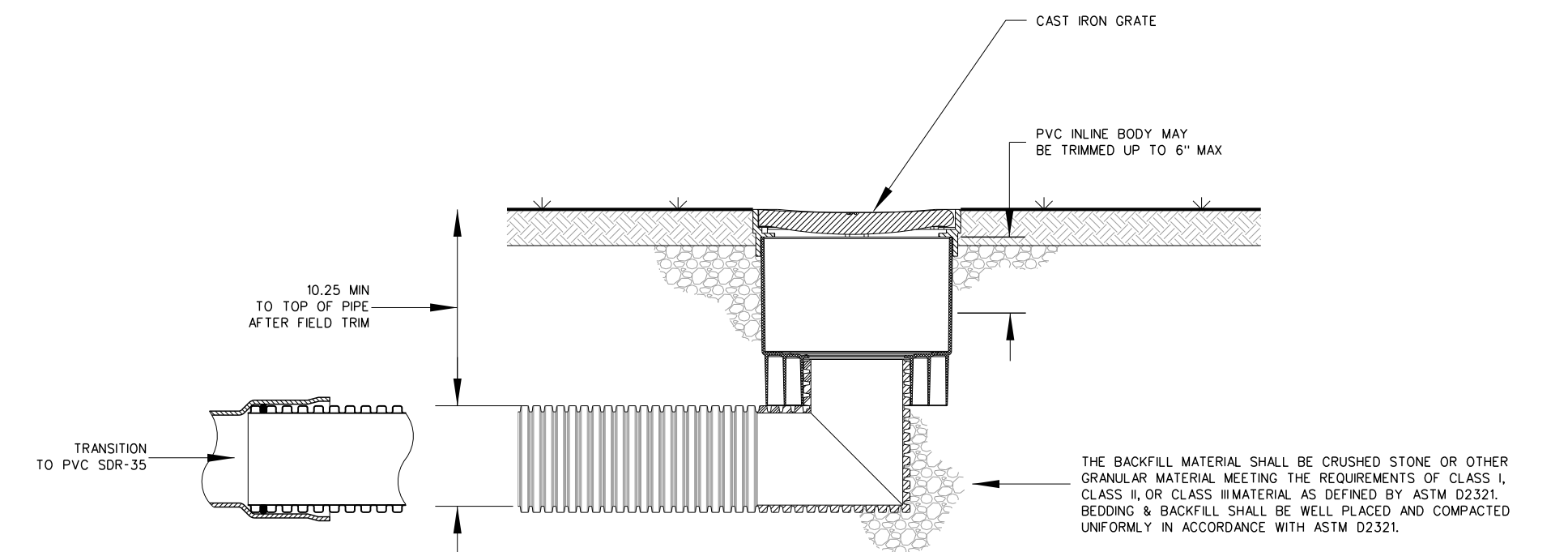
**EXPANSION JOINT (E.J.)**  
(Joints not to exceed 20' o.c. locate at all walk intersections and inside corners)

**101.4 CONCRETE JOINT DETAILS**  
SCALE: NONE

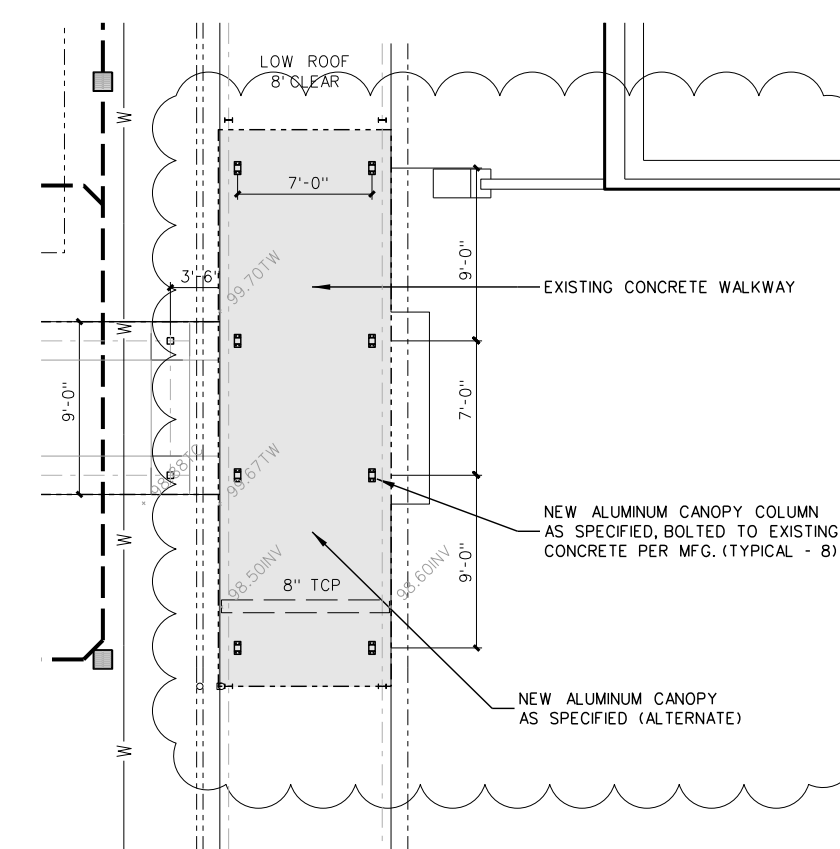


NOTE: CLEANOUT TO BE OF SAME MATERIAL AS PIPE U.O.N.

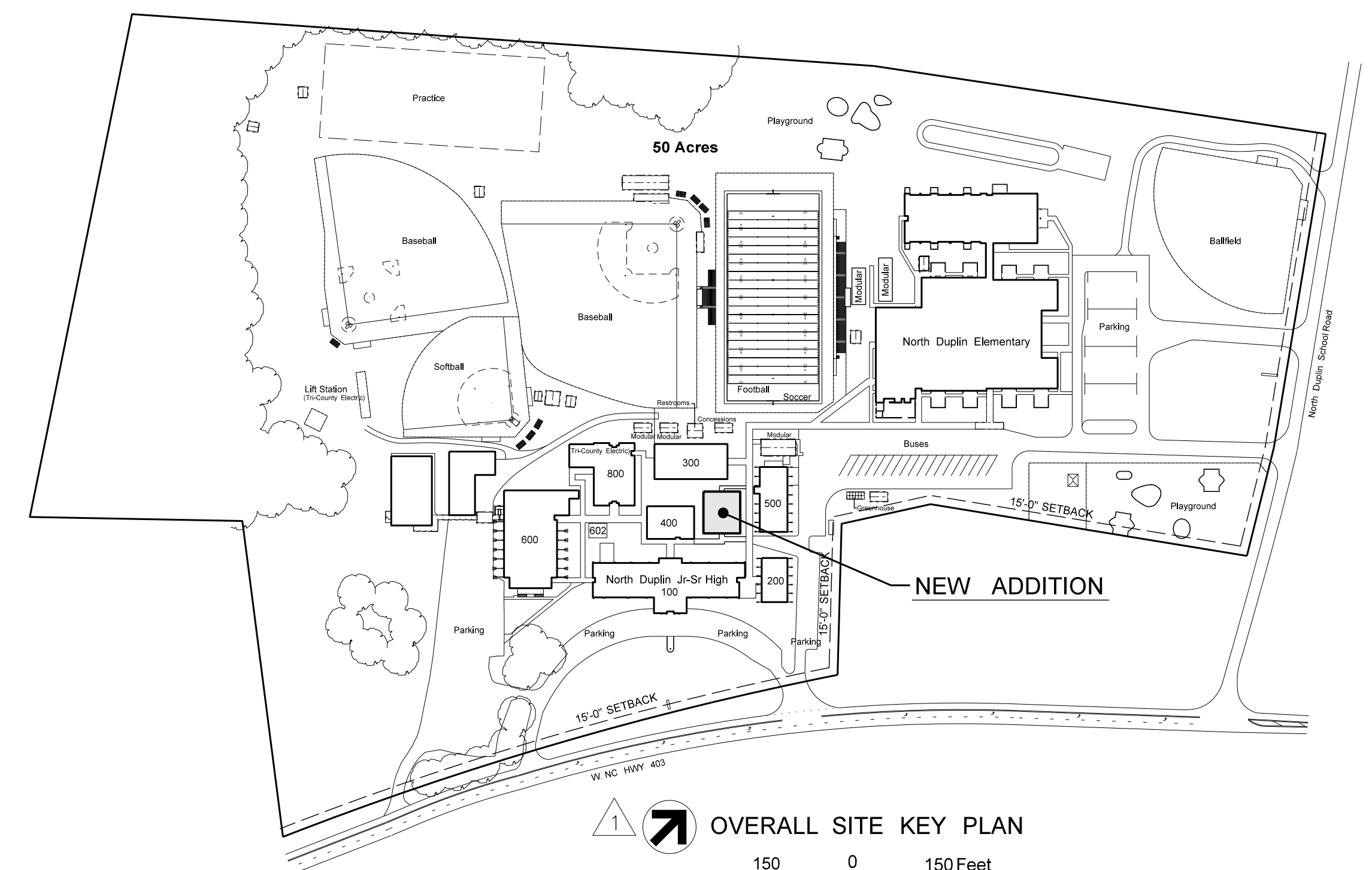
**101.3 CLEANOUT DETAIL**  
SCALE: NTS



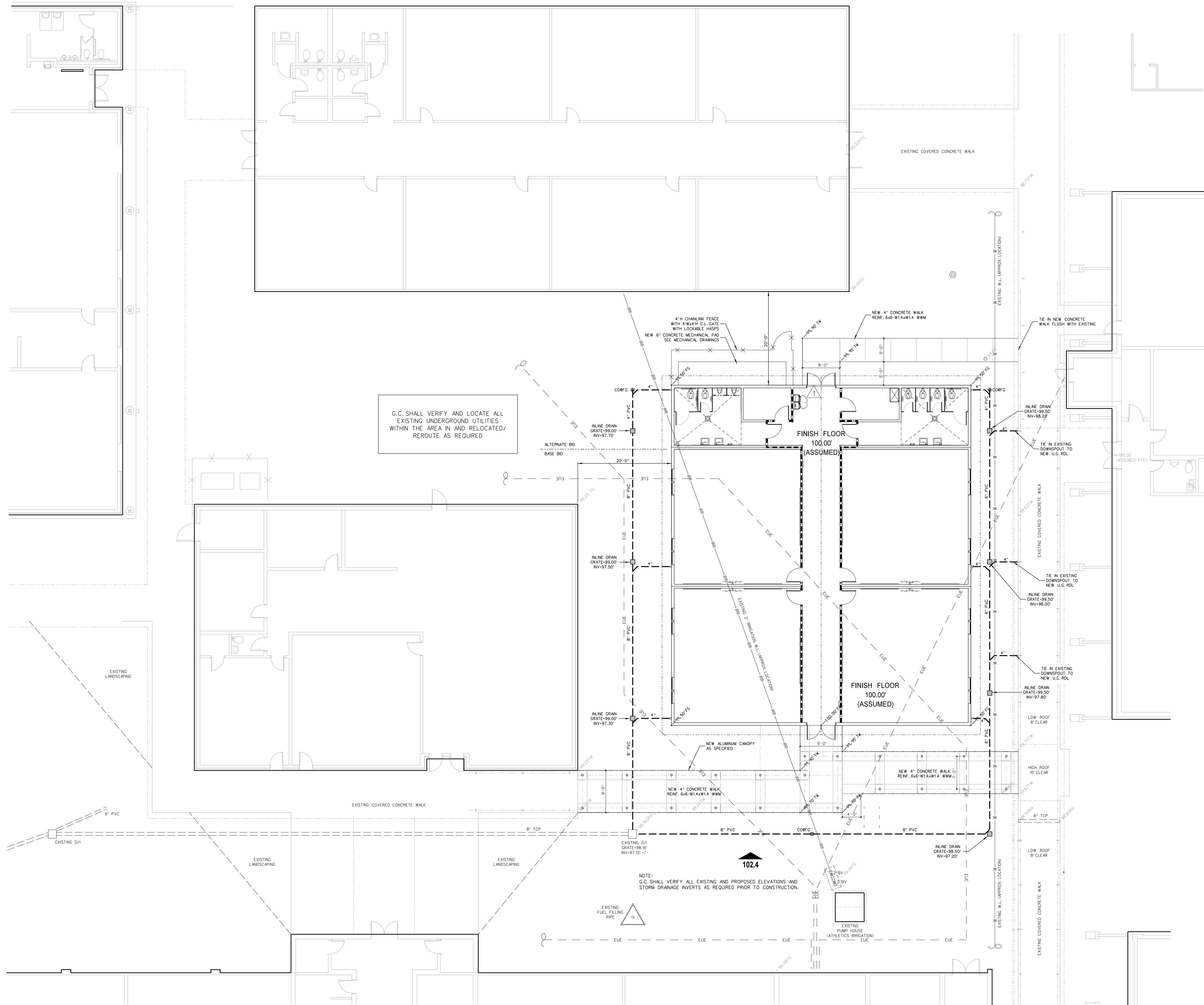
**101.2 INLINE DRAIN DETAIL (SHALLOW INSTALLATION)**  
SCALE: NTS



**101.6 ALTERNATE G-1 - REPLACE 3 BAYS OF EXISTING CANOPY WITH NEW**  
SCALE: 1" = 10'-0"



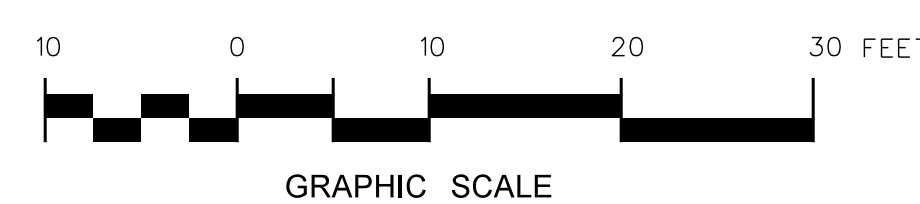
**OVERALL SITE KEY PLAN**  
Graphic Scale



G.C. SHALL VERIFY AND LOCATE ALL EXISTING UNDERGROUND UTILITIES WITHIN THE AREA IN AND RELOCATED/ REROUTE AS REQUIRED

NOTE: G.C. SHALL VERIFY ALL EXISTING AND PROPOSED ELEVATIONS AND STORM DRAINAGE INVERTS AS REQUIRED PRIOR TO CONSTRUCTION.

**002.1 SITE PLAN**  
SCALE: 1" = 10'-0"



No.	Date	Revision
1	10-18-23	Revised per Alternate G-1

**Hite associates**  
ARCHITECTURE / PLANNING / TECHNOLOGY  
2600 Meridian Drive / Greenville, NC 27834 / Tel: (252) 757-0333



New Classroom Addition for  
**North Duplin Jr.-Sr. High School**  
1388 NC-403, Mt. Olive, NC 28365  
Duplin County / North Carolina

Project No.	22253
Date:	6 March 2023
Drawing no.	<b>A</b> <b>002</b>