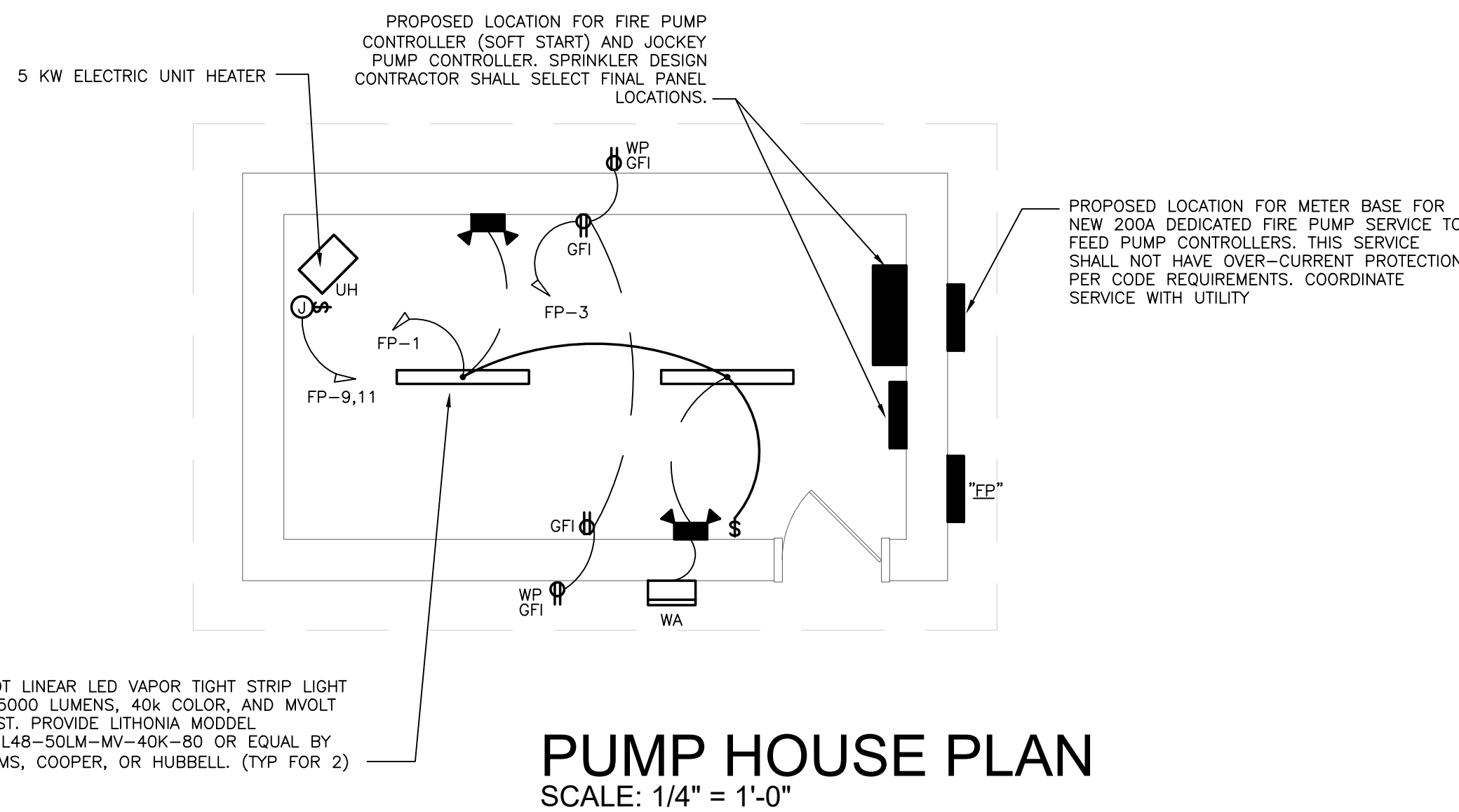
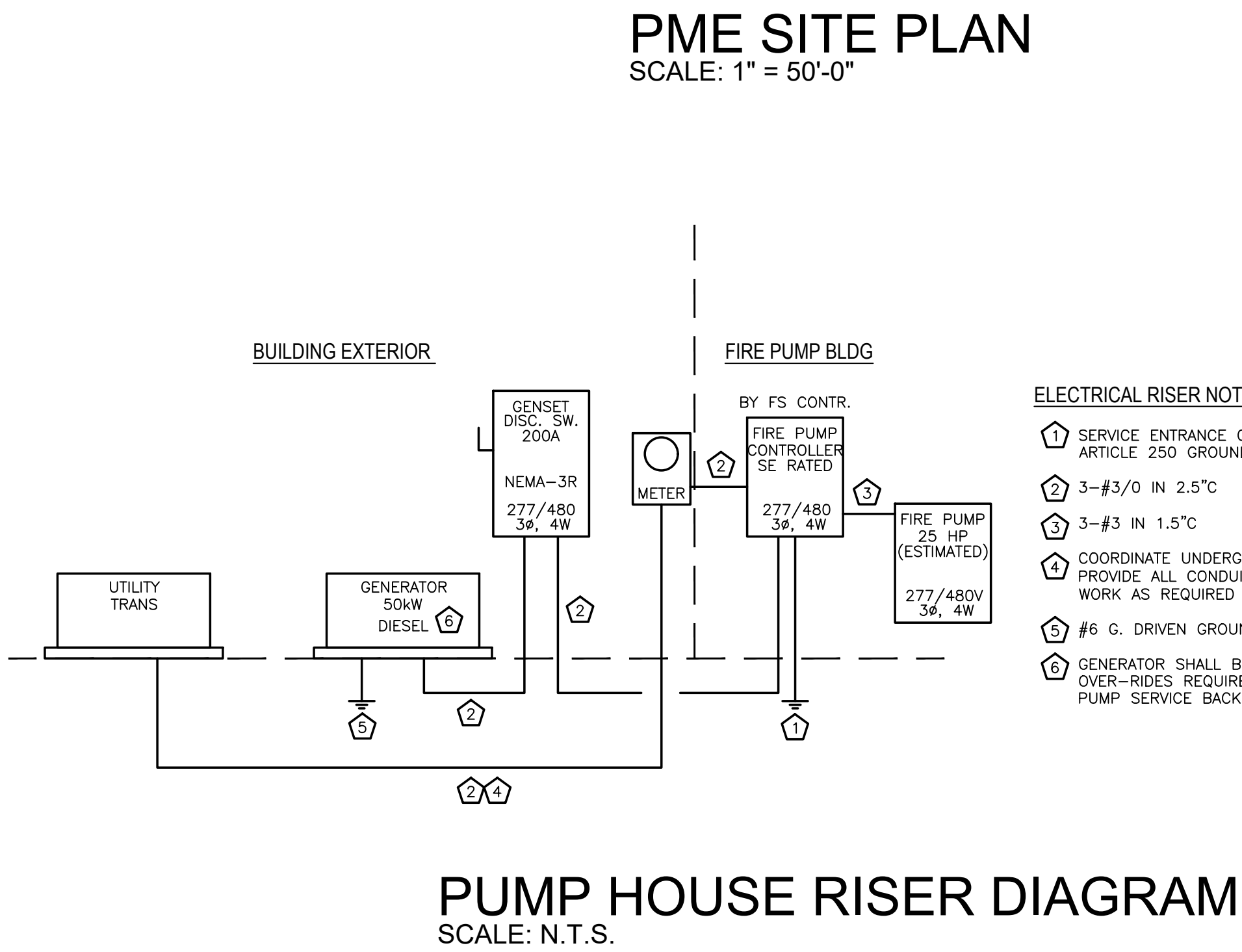
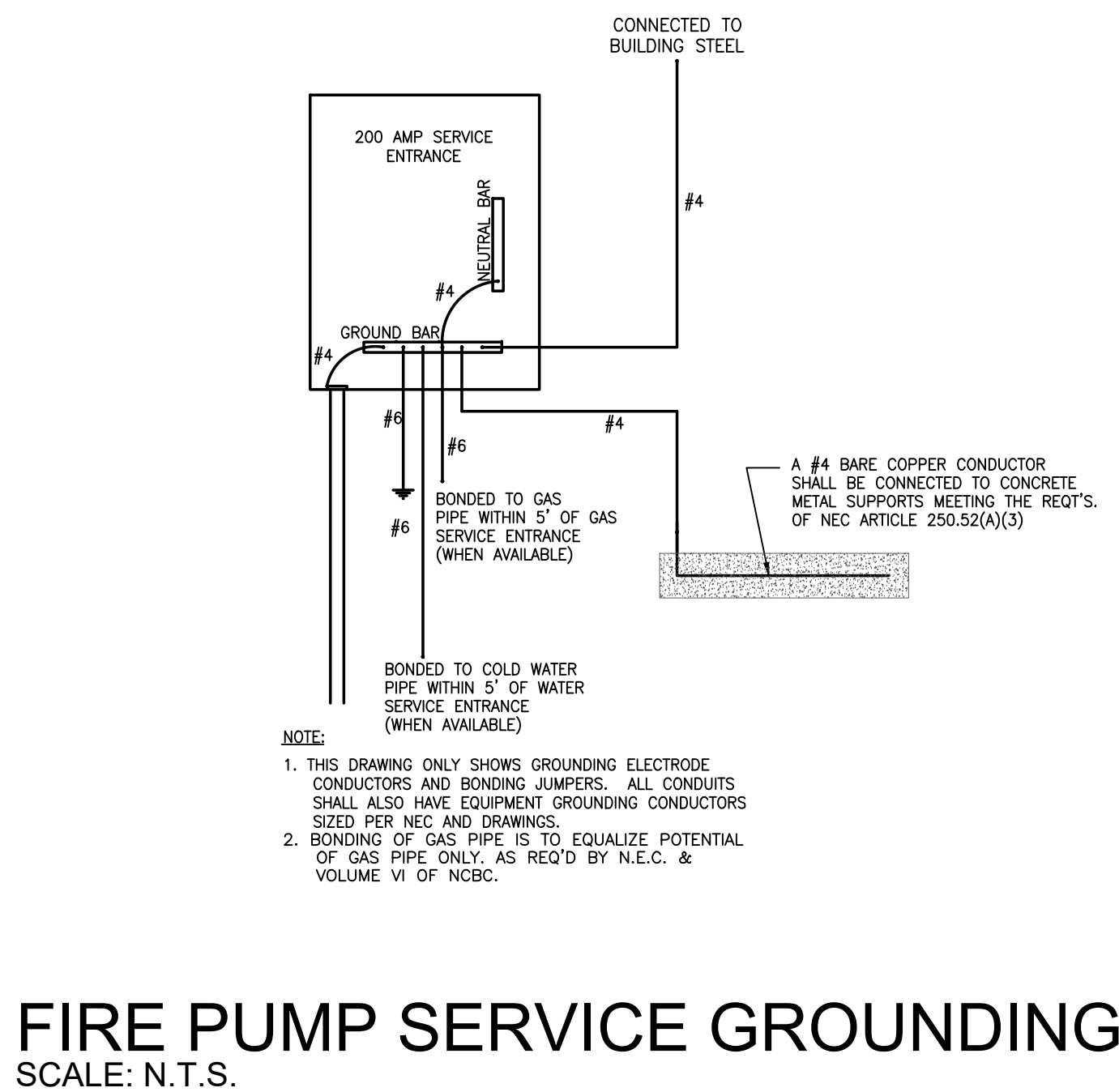
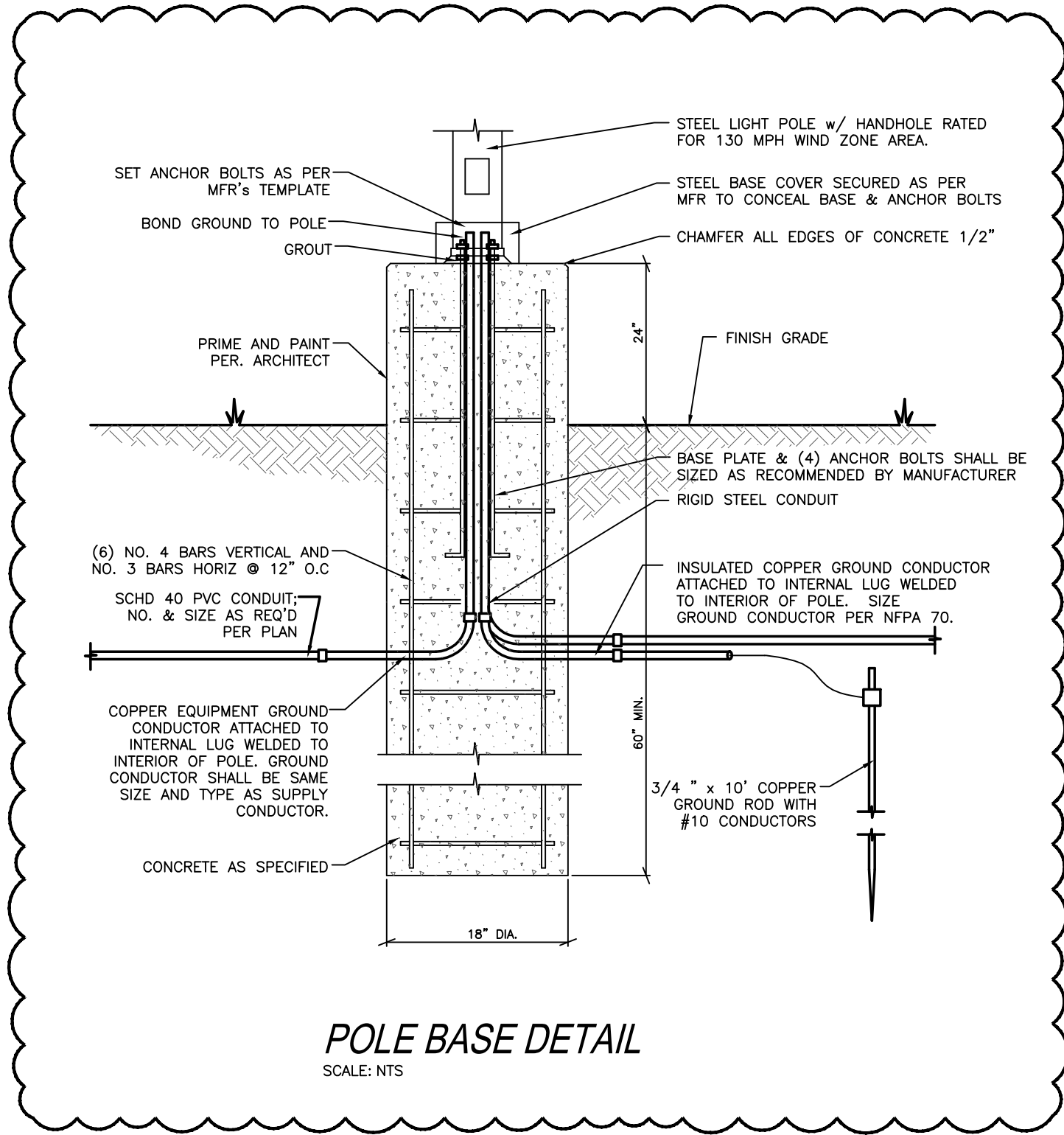


- SITE KEY NOTES:**
- A APPROXIMATE LOCATION OF EXISTING POLE LIGHT REMAIN "AS-IS".
  - B PROVIDE AND INSTALL NEW POLE LIGHT IN THIS LOCATION. TIE NEW LIGHTS BACK TO NEW POLE LIGHT POWER CKT (SEE PANEL SCHEDULES). USE FEEDERS AS INDICATED TO ACCOUNT FOR VOLTAGE DROP.
  - C PROVIDE AND INSTALL A 24" x 24" JUNCTION BOX (QUASITE OR EQUAL) IN THIS APPROXIMATE LOCATION.
  - D EC IS RESPONSIBLE FOR PROVIDING POWER TO THE POND SPRAYER PUMP AND CONTROLLER. FIELD VERIFY EXACT CONNECTION REQUIREMENTS WITH EQUIPMENT PROVIDED.
  - E EC SHALL PROVIDE AND INSTALL A LEVEL 2, 7.6KW, 208V-1PH DUAL PORT ELECTRIC VEHICLE CHARGING STATION IN THIS LOCATION. COORDINATE OUTLET/CONNECTION, BREAKER AND FEEDER FOR STATION PROVIDED. BASIS OF DESIGN IS: POWER CHARGE "PRO LIGHTING" - 32A" OR EQUAL.

FP DEMAND CALCS				
LIGHTING	0.40	KV/X	125 %	= 0.5 KVA
RECEPTAC TOTAL	0.20	KVA		
1ST	10.00	KV/X	100 %	= 0.2 KVA
REMAIN	0.00	KV/X	50 %	= 0.0 KVA
MOTORS	2.50	KV/X	100 %	= 2.5 KVA
A/C	0.00	KV/X	100 %	= 0.0 KVA
HEATING	3.77	KV/X	100 %	= 3.8 KVA
FUTURE		KV/X	100 %	= 0.0 KVA
KITCHEN	0.00	KV/X	65 %	= 0.0 KVA
MISCELLANEOUS	0.30	KV/X	100 %	= 0.3 KVA
TOTAL	= 20.2 amps = 7.3 KVA			

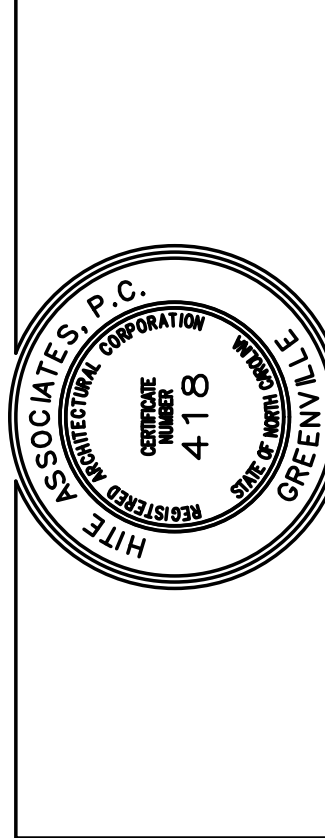
SITE LIGHT FIXTURE SCHEDULE						
TYPE	DESCRIPTION	LAMPS	VOLTS	WATTS	B.F. CATALOG NUMBER	
S1	SINGLE HEAD SHOEBOX STYLE LED POLE LIGHT TO CLOSELY MATCH EXISTING SITE LIGHTING ON A 6" 50 ALUMINUM 25' POLE TO BE DARK BRONZE FINISH.	LED	208V/120V	90	-	POLE MOUNTED SITE LIGHT WITH ARM AND LED HEAD ON 25'-0" SQUARE POLE. PROVIDE FIXTURE WITH UNIT MOUNTED PHOTOCELL. FIXTURE BY GUARCO (F0141-48L-NW3-A83-2-208-18A) (FIELD VERIFY POLE AND COLOR TO MATCH EXISTING) OR APPROVED EQUAL BY LITHONIA OR HUBBELL.
S2	DOUBLE HEAD SHOEBOX STYLE LED POLE LIGHT TO CLOSELY MATCH EXISTING SITE LIGHTING ON A 6" 50 ALUMINUM 25' POLE TO BE DARK BRONZE FINISH.	LED	208V/120V	180	-	SAME AS ABOVE FIXTURE BUT WITH (2) HEADS.
NOTES: 1) FIELD VERIFY EXACT LOCATIONS, SIZES AND TYPES OF EXISTING LIGHTS AND EXISTING CIRCUITS. 2) PROVIDE SUBMITTALS FOR PRE-BID APPROVAL AS SPECIFIED IN "INSTRUCTIONS TO BIDDERS"; ARTICLE 3.3.2 3) WATTS = INPUT WATTS, B.F. = BALLAST FACTOR 4) ALL EXTERIOR LAMPS TO HAVE A COLOR RENDERING TEMPERATURE INDEX OF 4000K TO 5000K 5) CATALOG NUMBERS MAY NOT BE COMPLETE; CONTRACTORS RESPONSIBILITY TO VERIFY CATALOG NUMBER						

NEW PANELBOARD SCHEDULE - "FP" (NEMA-3R RATED)														
MAIN: 100A MCB					VOLTAGE: 208/120					PHASE: 3				
WIRE: 4					MOUNTING: SURFACE					AIC: 22,000				
BUS BARS: COPPER					CONDUIT: RIGID					WIRE: 4				
CKT#	BKR	POLE	WIRE	COND	LOAD (KVA)	LTG	REC	MT	A/C	HTG	KIT	MISC	DESCRIPTION	SIZE
1	20	1	12	3/4"	LIGHTING CIRCUIT	0.4							XP-10 MONITOR PNL	3/4"
3	20	1	12	3/4"	GENERAL RECEPTACLE	0.2							SPARE	3/4"
5		1			SPACE								SPARE	3/4"
7		1											JOCKEY PUMP (2HP)	3/4"
9	25	2	10	3/4"	UH-2								SPARE	3/4"
11													SPARE	3/4"
LIGHTING (KVA):					0.4	0.4	0.2	0.0	0.0	3.8	0.0	0.0	CONNECTED LOAD (KVA):	7.2
RECEPTACLES (KVA):					0.2								DEMAND LOAD (KVA):	7.3
MOTORS (KVA):					2.5								CONNECTED LOAD (AMPS):	19.9
A/C (KVA):					0.0								DEMAND LOAD (AMPS):	20.2
HEATING (KVA):					3.8									
KITCHEN (KVA):					0.0									
MISCELLANEOUS (KVA):					0.3									
NOTES: PANEL IS LOCATED AT FIRE PUMP HOUSE EXTERIOR.														



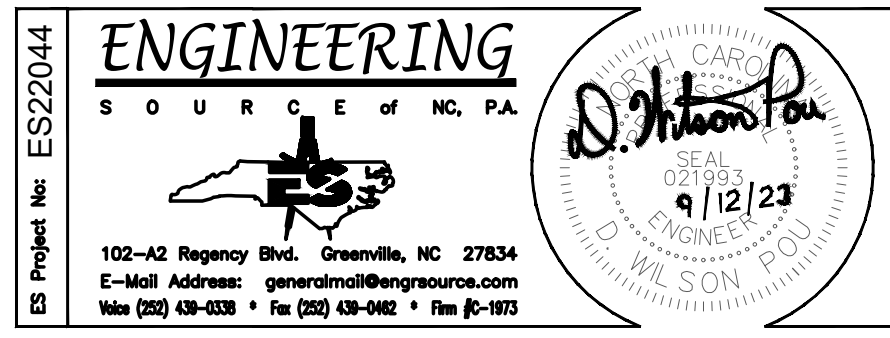
1	9/12/23	PRE-BID MTC & ADDENDUM #1	Revision
2			
3			
4			
5			
6			
7			
8			
9			
10			
11			
12			

**Hite associates**  
ARCHITECTURE / PLANNING / TECHNOLOGY  
2600 Meridian Drive / Greenville, NC 27834 / tel (252) 757-0333



COMMUNITY CENTER AND GYMNASIUM FOR  
**Alice F. Keene District Park**  
4561 County Home Road, Greenville, NC 27858

Project No.	22207
Date	July 2023
Drawing no.	PME 001



THIS DRAWING IS THE PROPERTY OF ENGINEERING SOURCE OF NC, P.A. THIS DRAWING IS NOT TO BE COPIED IN WHOLE OR IN PART. THIS DRAWING OR THE INFORMATION HEREON IS NOT TO BE USED ON ANY OTHER PROJECT AND MUST BE RETURNED TO ENGINEERING SOURCE OF NC, P.A. UPON REQUEST. DO NOT SCALE THESE DRAWINGS. REFER TO ARCHITECTURAL DRAWINGS FOR EXACT DIMENSIONS.