

BRANCH CIRCUIT AND CONDUIT BY ELECTRICAL CONTRACTOR. SEE PANELBOARD SCHEDULES FOR WIRE AND BREAKER SIZES TO PLUMBING EQUIPMENT. PLUMBING CONTRACTOR SHALL BE RESPONSIBLE FOR COORDINATING ANY WIRE AND BREAKER SIZE CHANGES WITH ELECTRICAL CONTRACTOR.

EXTERNALLY OR INTERNALLY MOUNTED DISCONNECT SWITCH FURNISHED BY PLUMBING CONTRACTOR AND INSTALLED BY ELECTRICAL CONTRACTOR. PLUMBING CONTRACTOR SHALL PROVIDE FUSES, AS REQUIRED.

EXTERNALLY MOUNTED STARTER FURNISHED BY PLUMBING CONTRACTOR AND INSTALLED BY ELECTRICAL CONTRACTOR. LINE AND LOAD SIDE CONNECTIONS BY ELECTRICAL CONTRACTOR. CONTROLS CONNECTIONS BY OTHERS. *

EQUIPMENT BY PLUMBING CONTRACTOR

EQUIPMENT BY PLUMBING CONTRACTOR. SEE PLUMBING AND ARCHITECTURAL PLANS FOR LOCATION OF ALL EQUIPMENT.

JUNCTION BOX MAY BE SHOWN ON ELECTRICAL PLANS FOR SOME EQUIPMENT. (NOT NECESSARY IF WIRING IS CONNECTED DIRECTLY TO STARTER OR DISCONNECT SWITCH.)

WIRING BY ELECTRICAL CONTRACTOR

WIRING BY ELECTRICAL CONTRACTOR

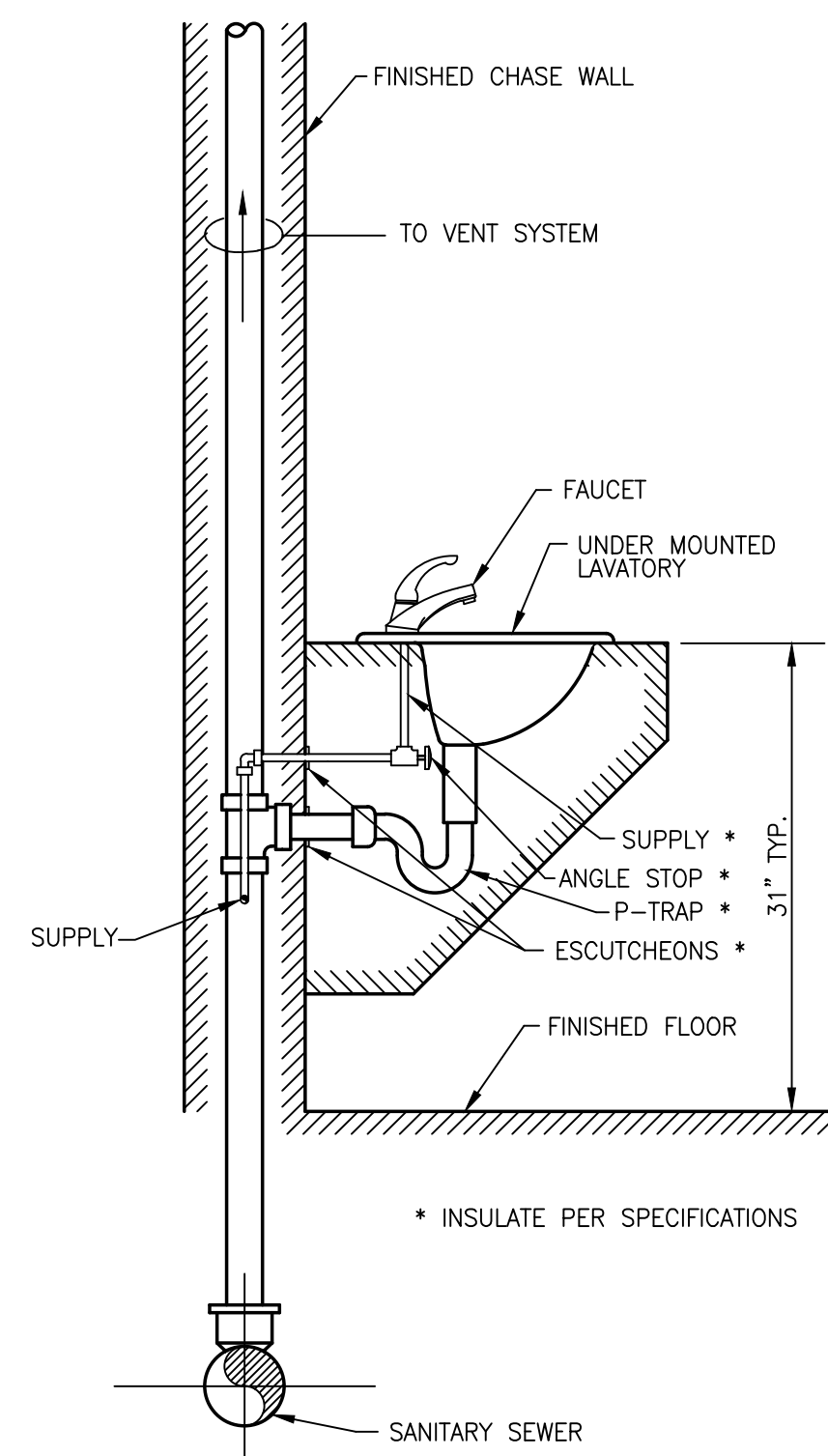
FINAL CONNECTIONS INSIDE EQUIPMENT TO BE MADE BY PLUMBING CONTRACTOR.

* A COMBINATION STARTER MAY BE USED IN LIEU OF A SEPERATE DISCONNECT SWITCH AND STARTER.

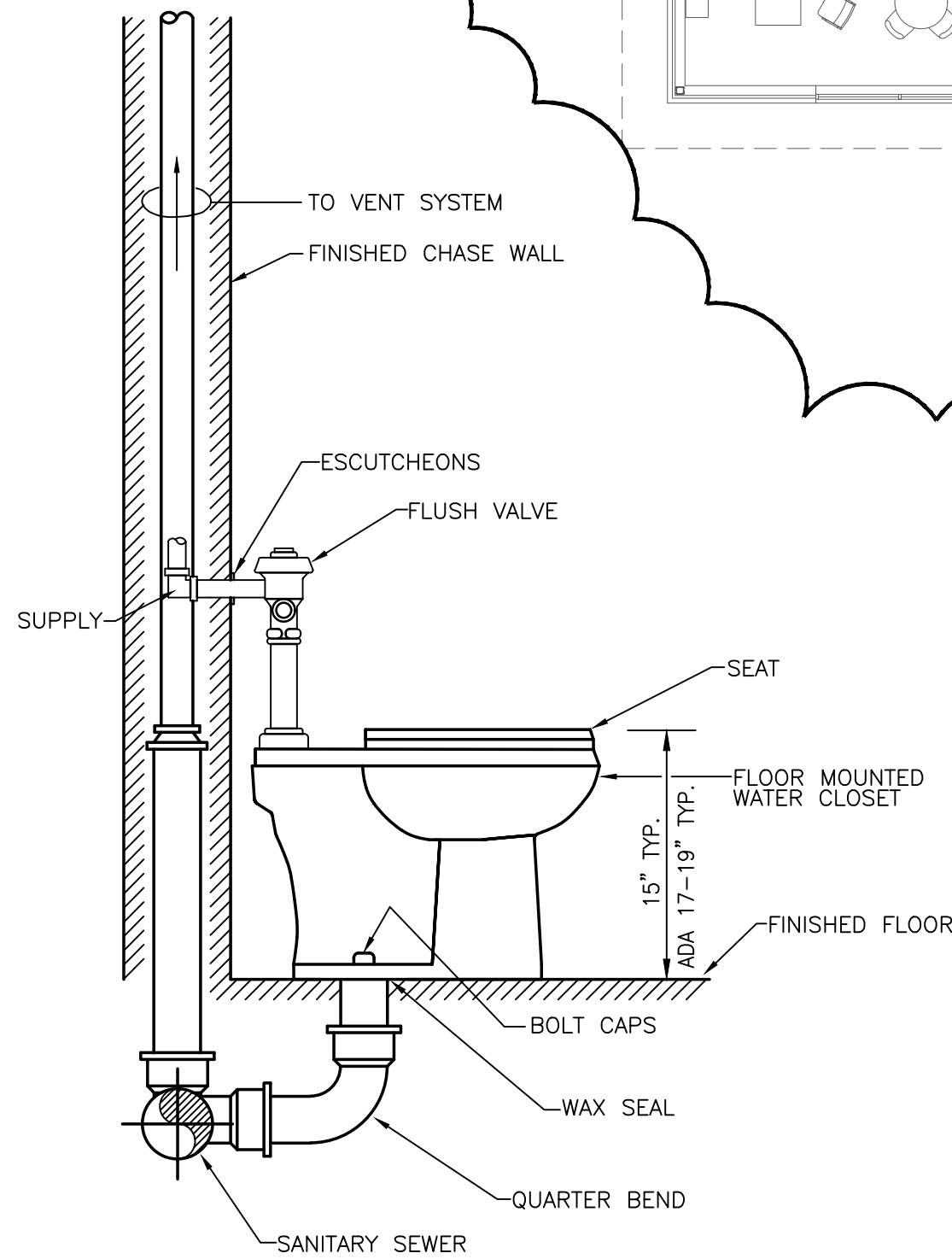
ELECTRICAL PANELBOARD

PLUMBING EQUIPMENT ELECTRICAL CONNECTION DETAIL

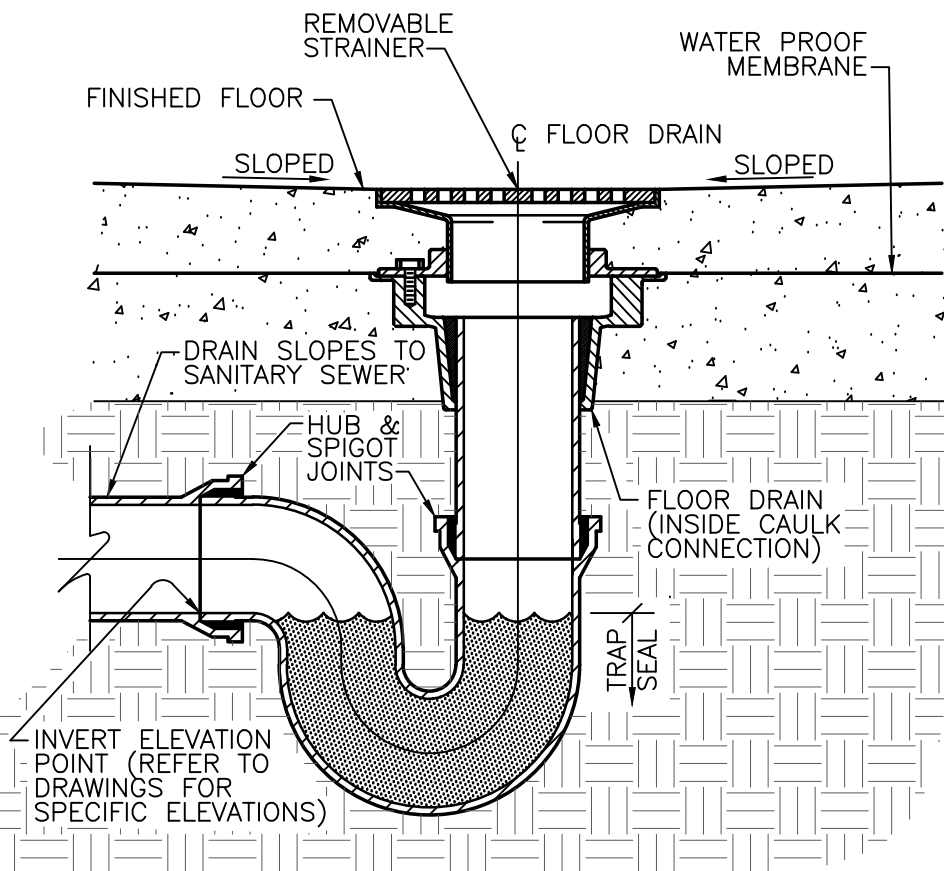
SCALE: N.T.S.



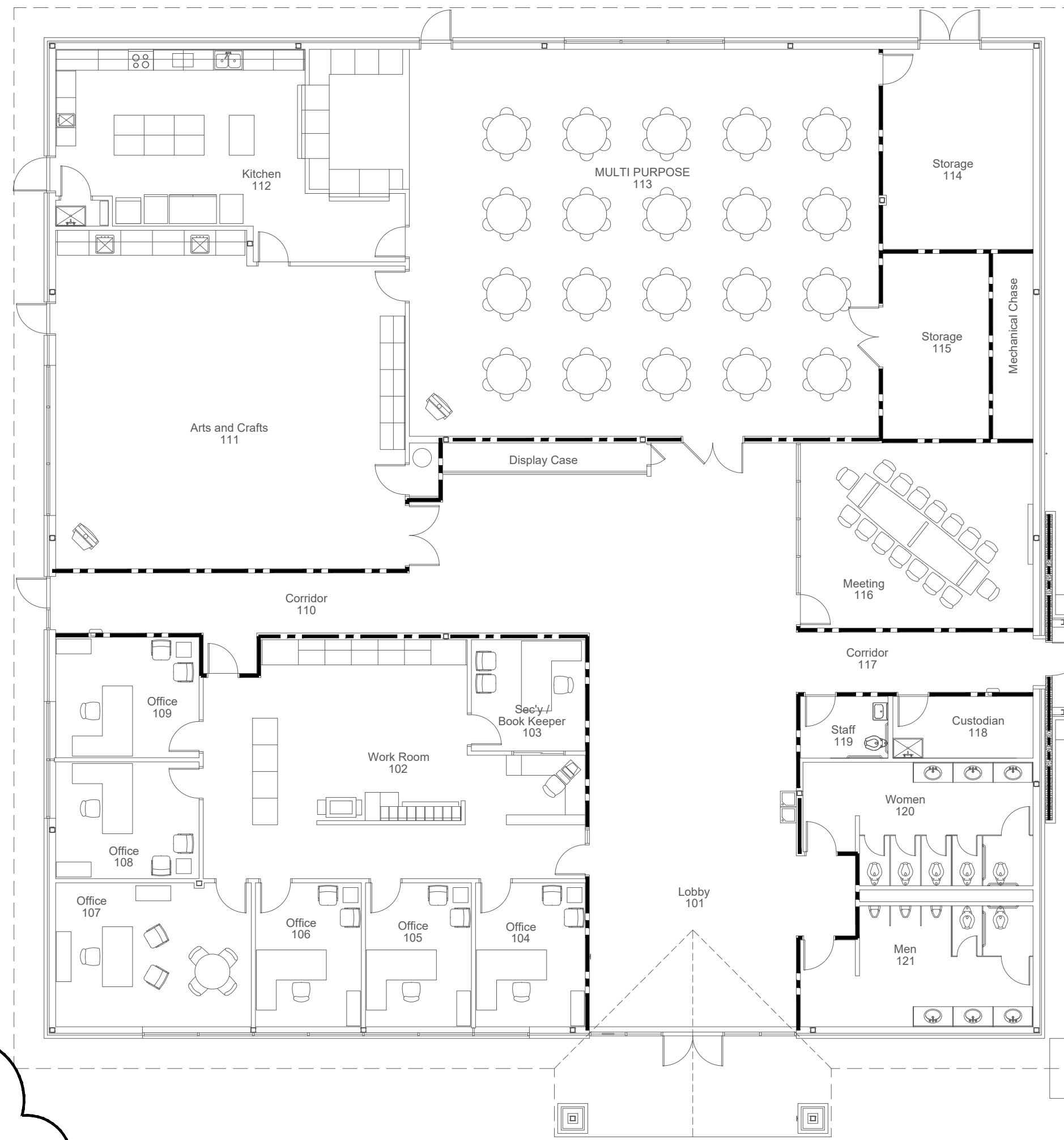
COUNTER SINK
SCALE: N.T.S.



WATER CLOSET
SCALE: N.T.S.



FLOOR DRAIN
SCALE: N.T.S.



SANITARY SEWER PLAN

SCALE: 3/32" = 1'-0"

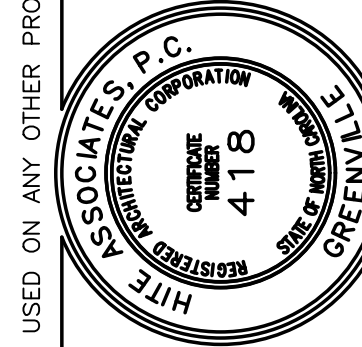
Project No. ES22044
Date: 9/12/23
ENGINEERING
SOURCE of NC, P.A.
102-42 Regency Blvd., Greenville, NC 27834
E-Mail Address: generalmail@engsource.com
Tel (252) 438-6258 • Fax (252) 438-5462 • TOLL FREE 1-800-368-1013

Project No. 22207
Date: July 2023
Drawing no. P 101

COMMUNITY CENTER AND GYMNASIUM FOR
Alice F. Keene District Park
4561 County Home Road, Greenville, NC 27858

THIS DRAWING IS THE PROPERTY OF ENGINEERING SOURCE OF NC, P.A. THIS DRAWING IS NOT TO BE COPIED IN WHOLE OR IN PART. THIS DRAWING OR THE INFORMATION HEREUPON IS NOT TO BE USED ON ANY OTHER PROJECT AND MUST BE RETURNED TO ENGINEERING SOURCE OF NC, P.A. UPON REQUEST. DO NOT SCALE THESE DRAWINGS. REFER TO ARCHITECTURAL DRAWINGS FOR EXACT DIMENSIONS.

Hite associates
ARCHITECTURE / PLANNING / TECHNOLOGY
2600 Meridian Drive / Greenville, NC 27834 / tel (252) 757-0333



Rev	Date	Description
1	9/12/23	PRE-BID W/C & ADDENDUM #1
2		Revision