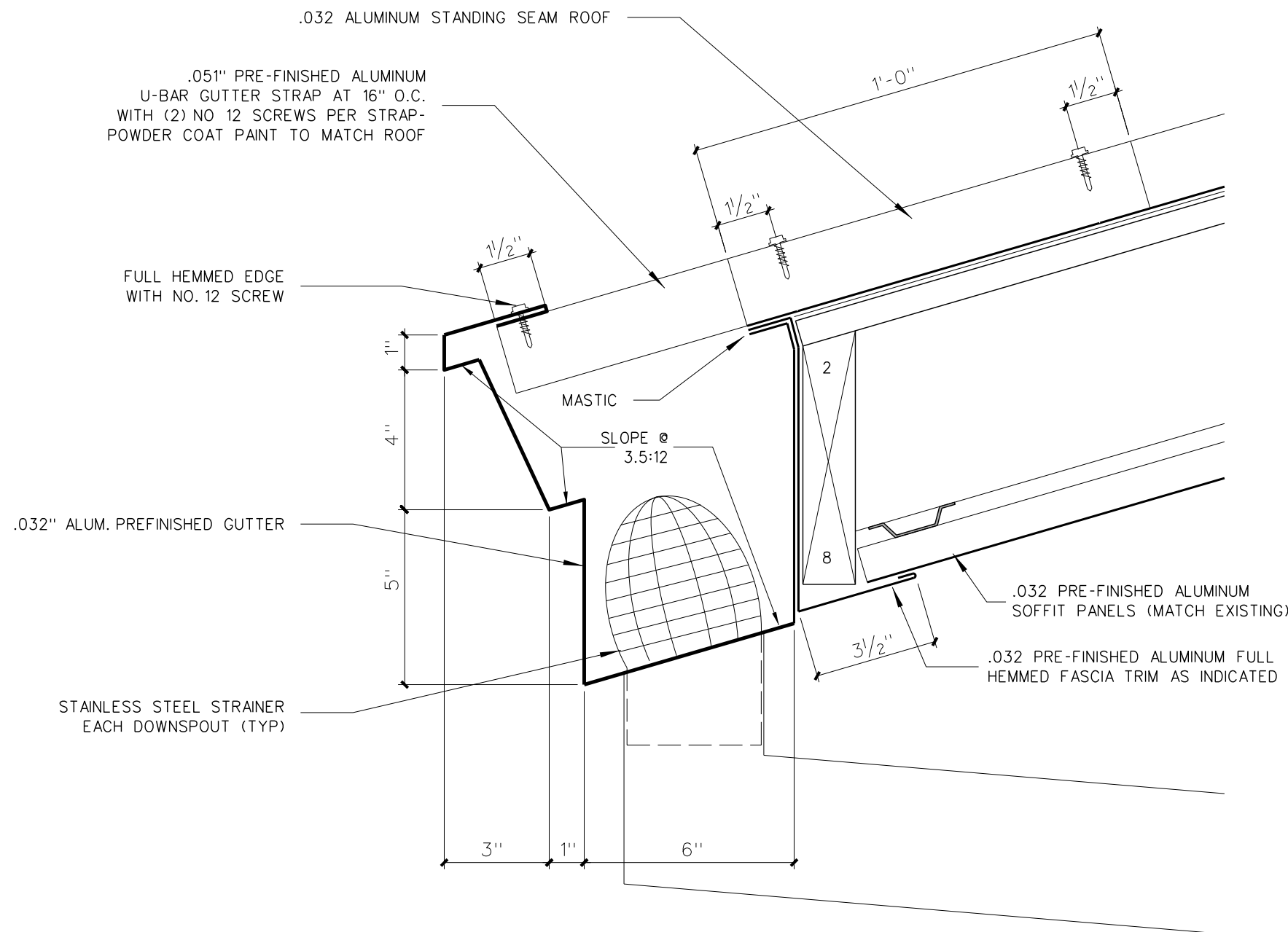
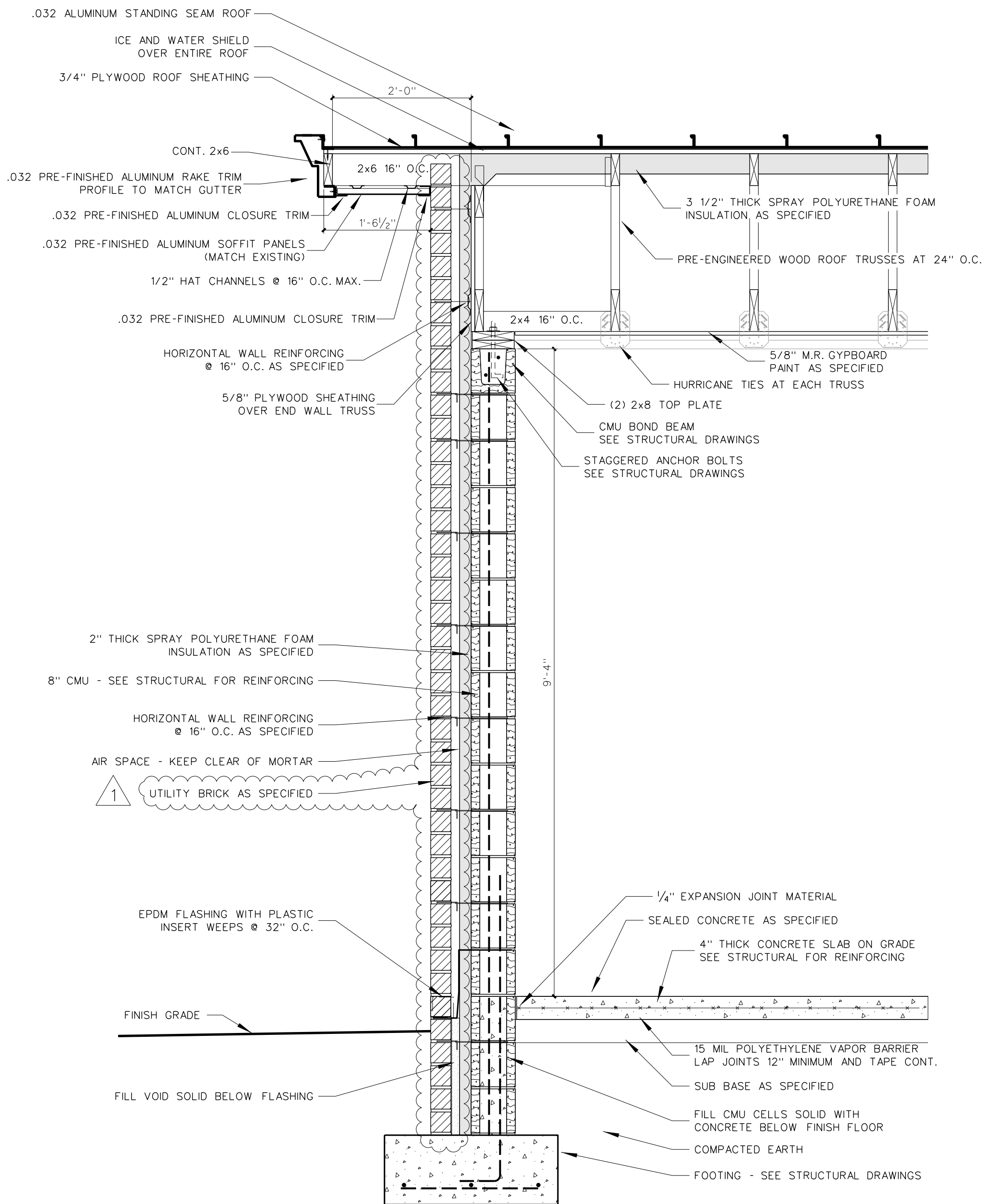


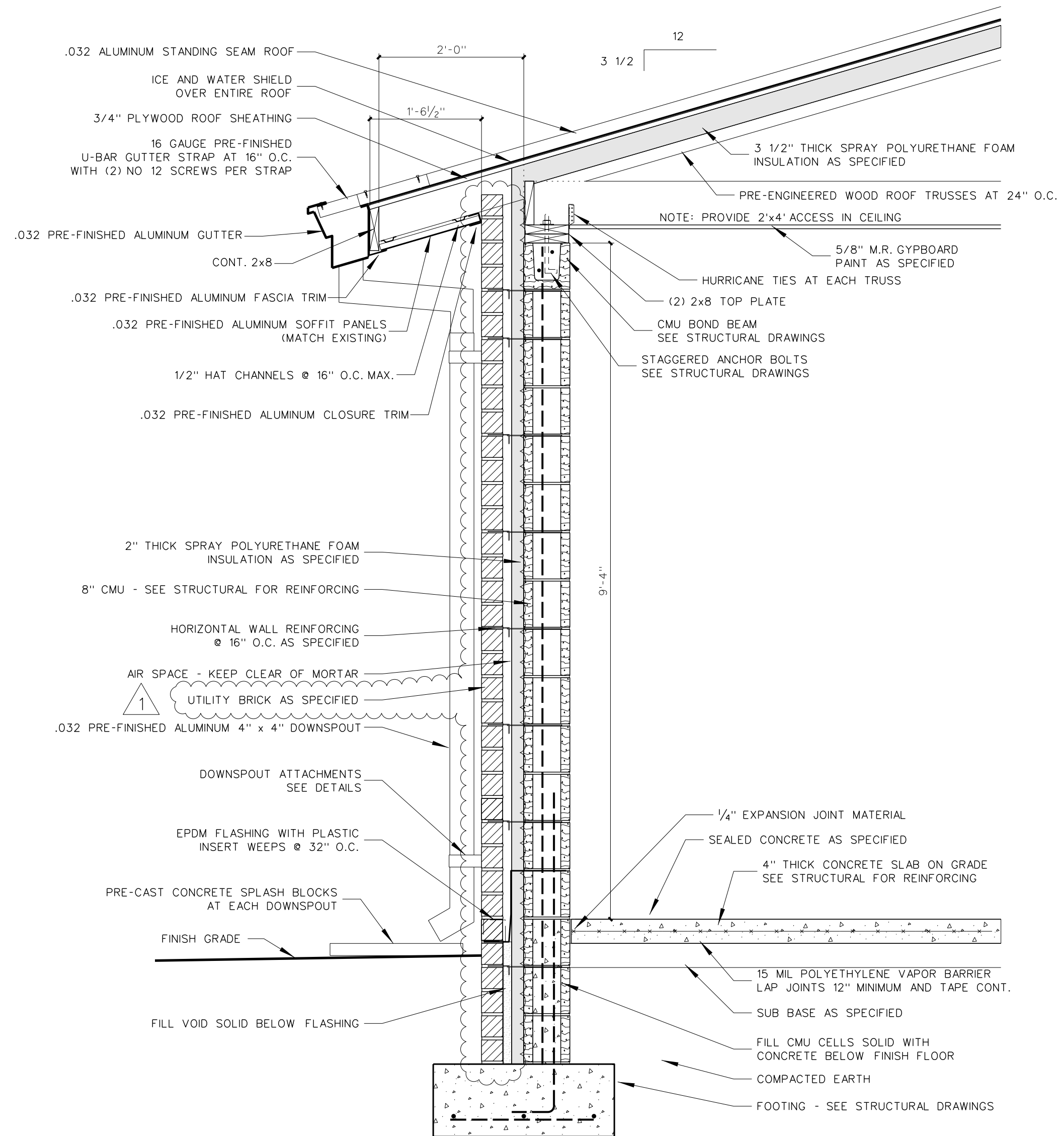
**601.10 RAKE DETAIL**  
SCALE: 3\"/>



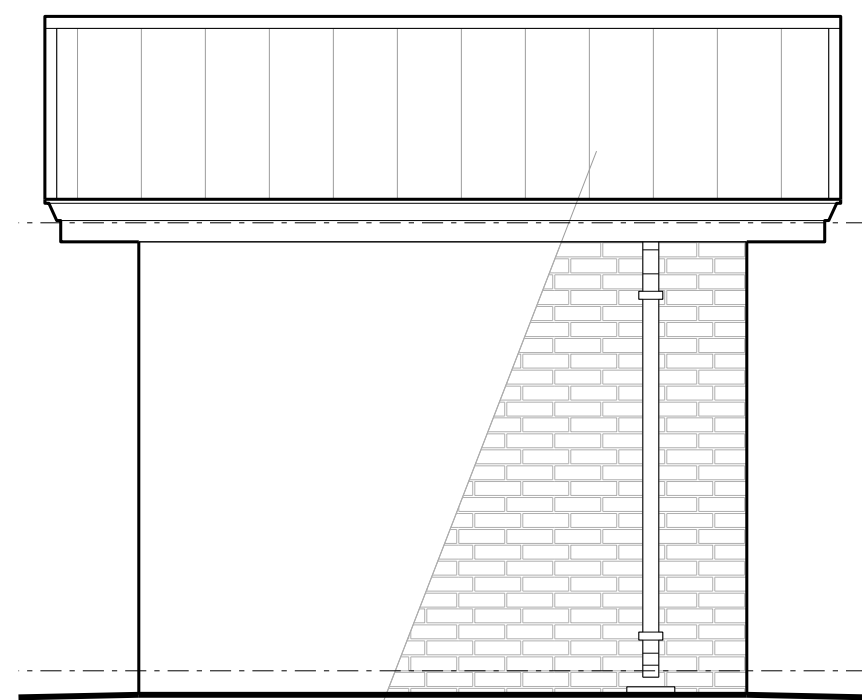
**601.9 GUTTER DETAIL**  
SCALE: 3\"/>



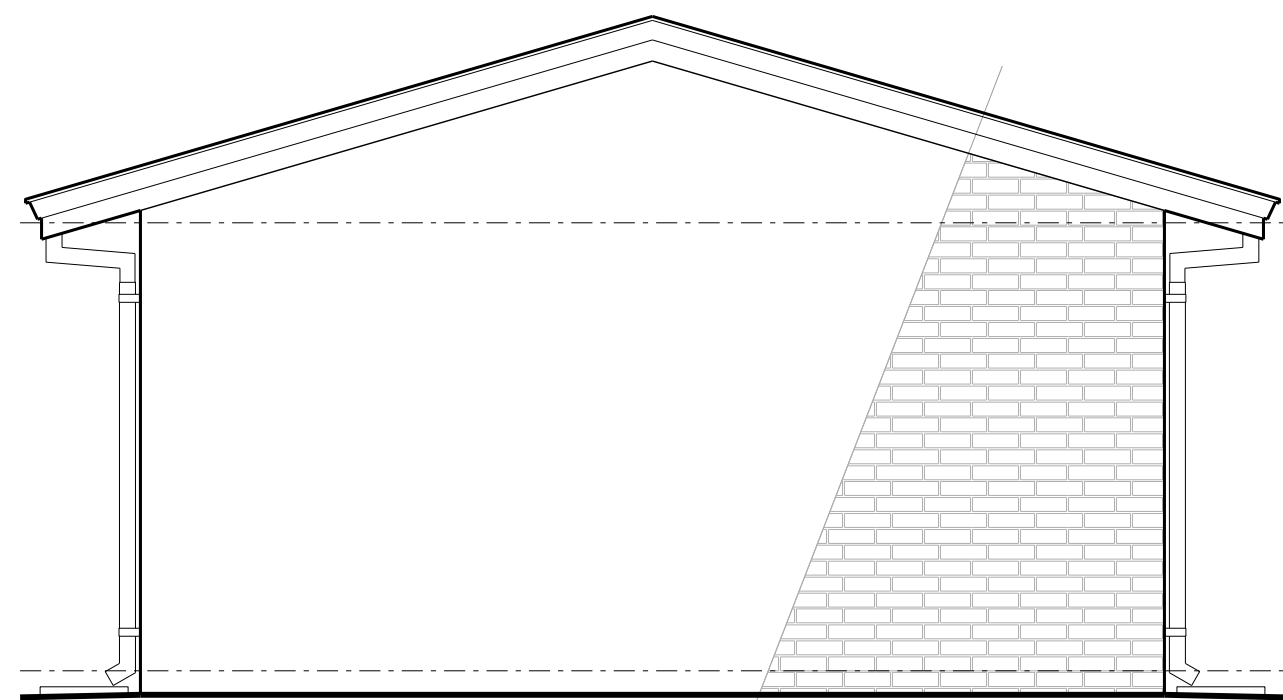
**601.8 RAKE WALL SECTION**  
SCALE: 3/4\"/>



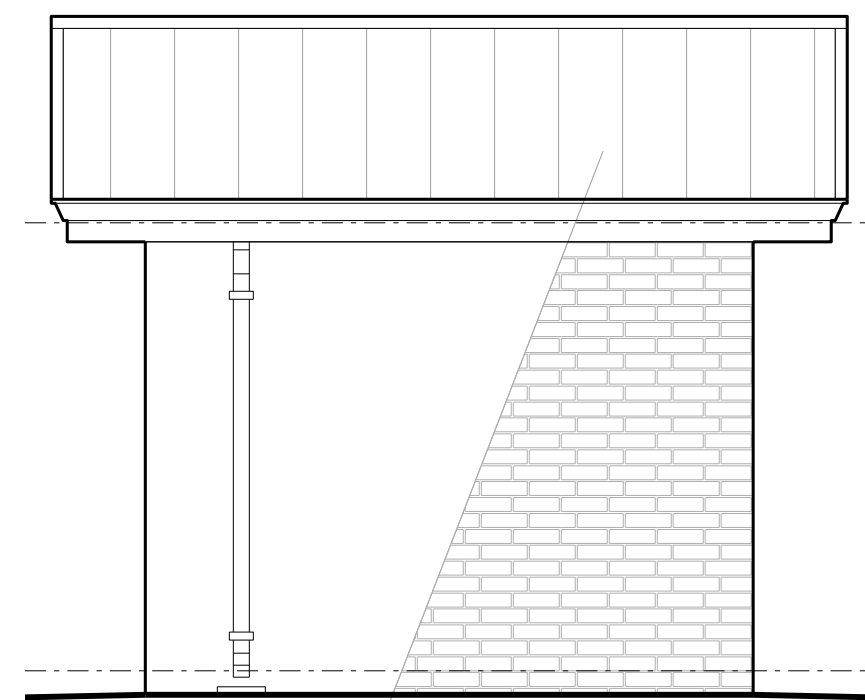
**601.7 TYPICAL WALL SECTION**  
SCALE: 3/4\"/>



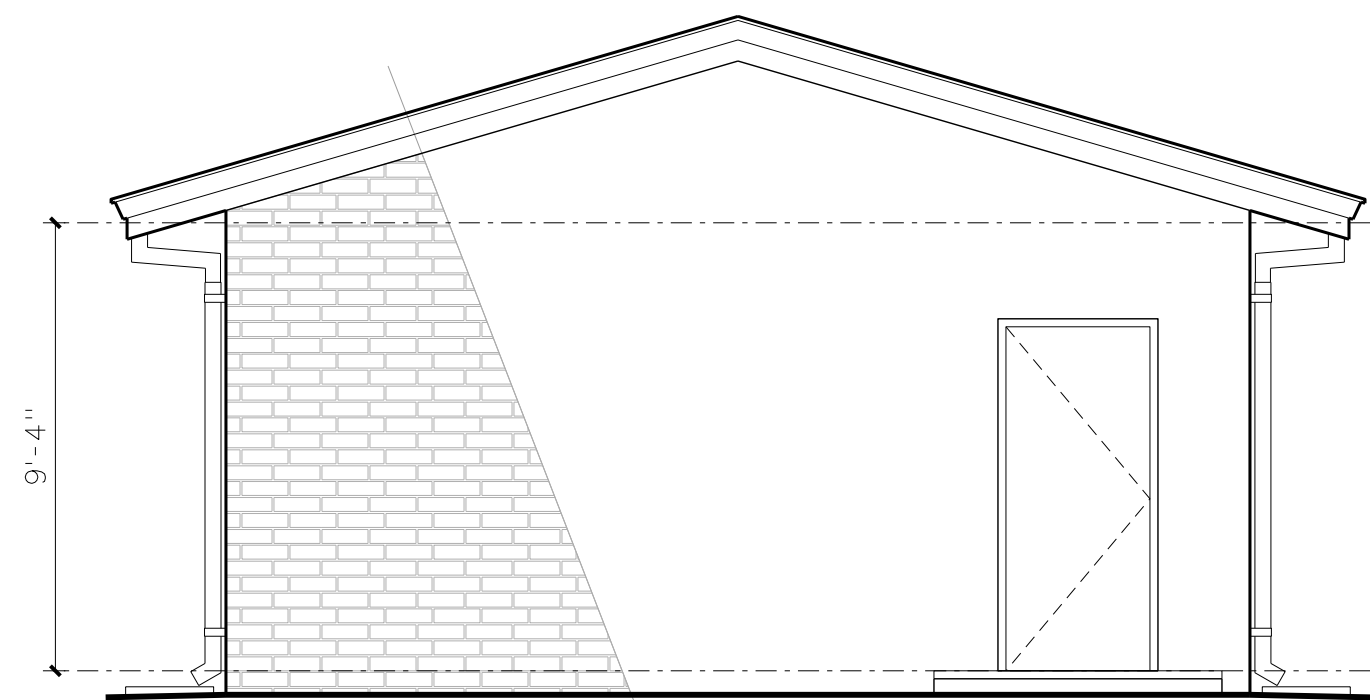
**601.6 EXTERIOR ELEVATION**  
SCALE: 1/4\"/>



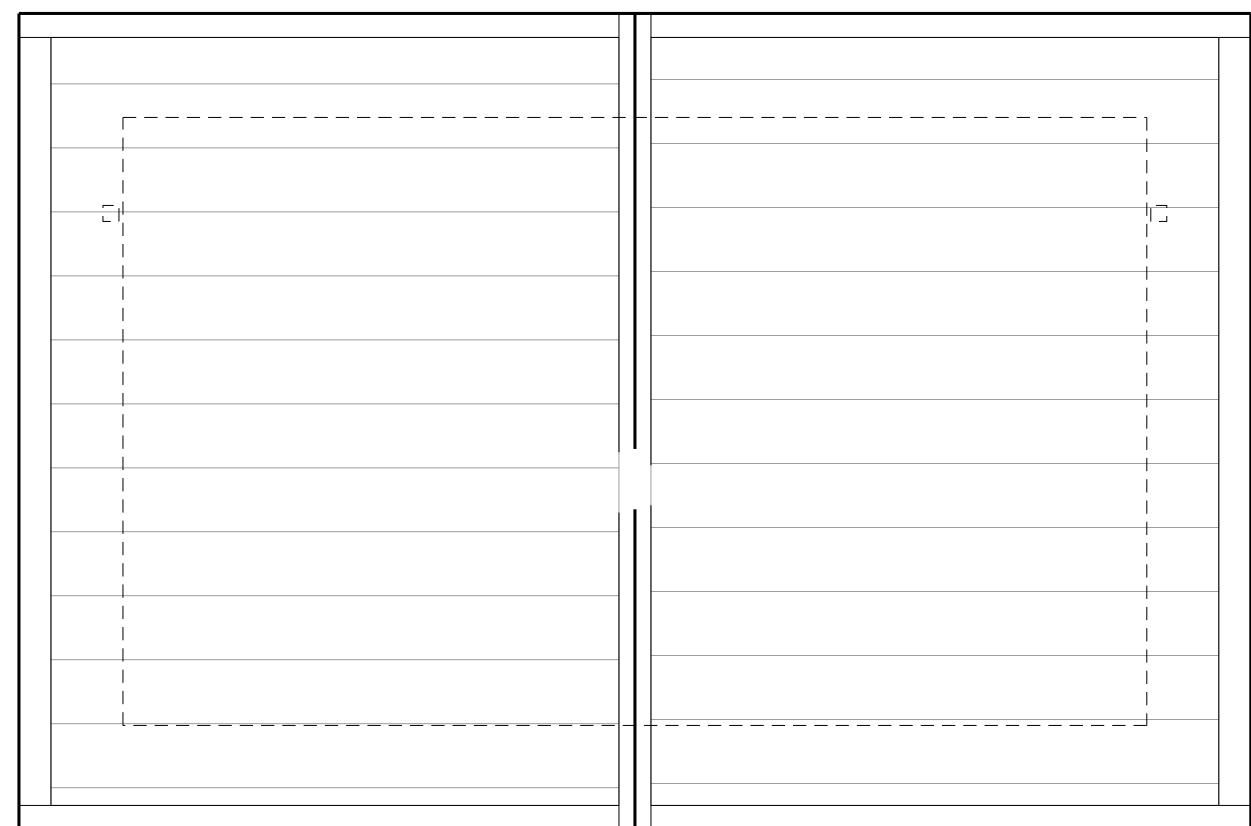
**601.5 EXTERIOR ELEVATION**  
SCALE: 1/4\"/>



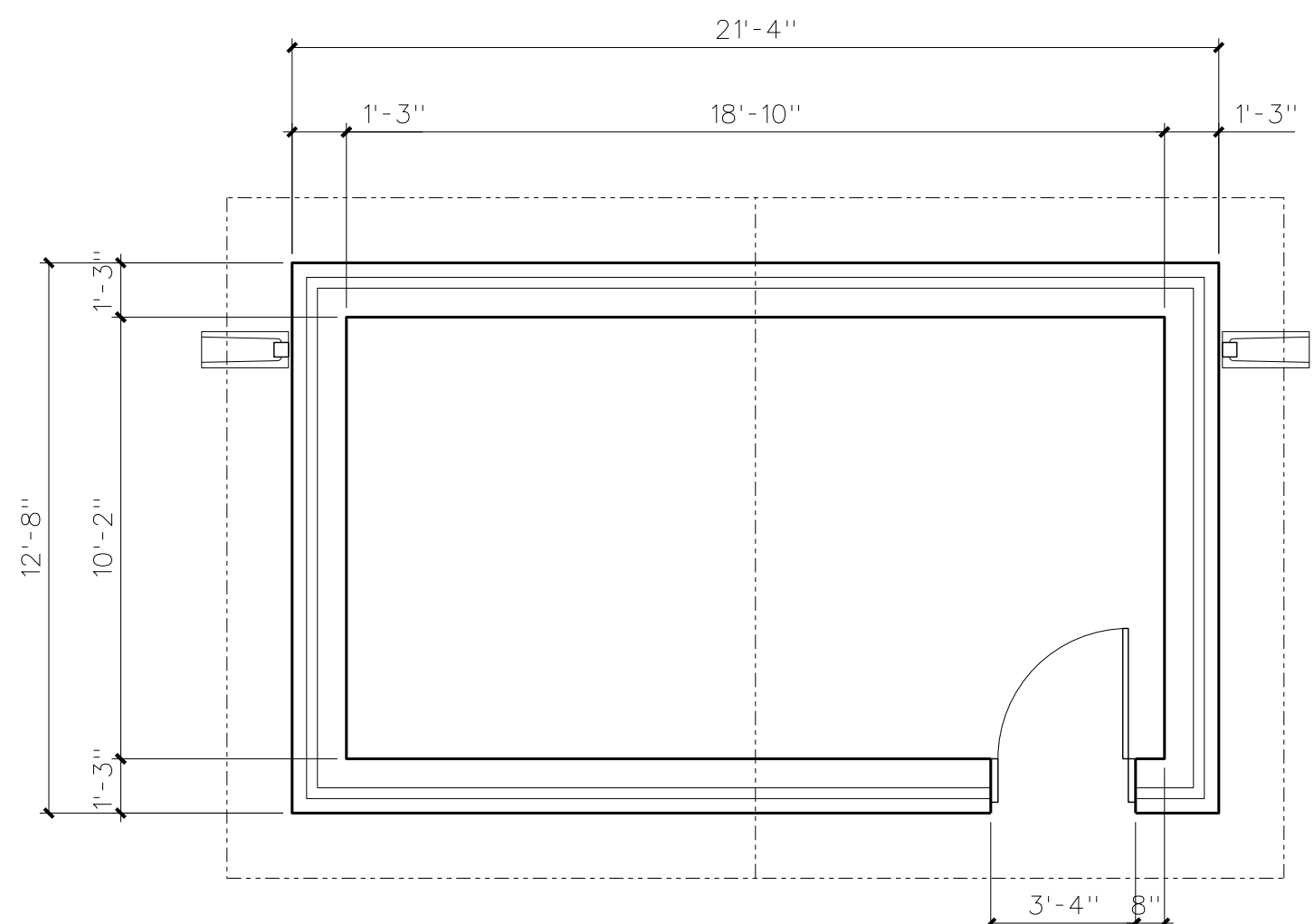
**601.4 EXTERIOR ELEVATION**  
SCALE: 1/4\"/>



**601.3 EXTERIOR ELEVATION**  
SCALE: 1/4\"/>



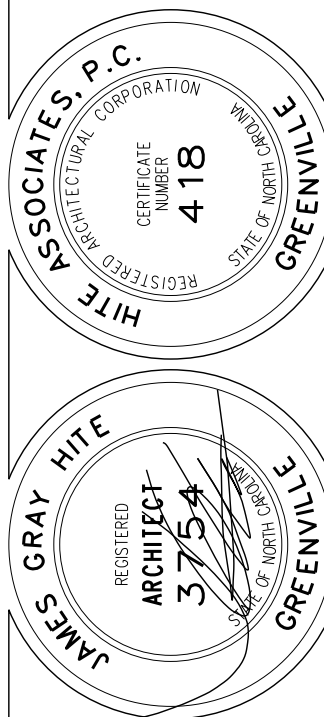
**601.2 PUMP HOUSE ROOF PLAN**  
SCALE: 1/4\"/>



**601.1 PUMP HOUSE FLOOR PLAN**  
SCALE: 1/4\"/>

Revision	
No.	Date
1	8/31/23
REVISED UTILITY BRICK PER ADDENDUM #1	

**Hite associates**  
ARCHITECTURE / PLANNING / TECHNOLOGY  
2600 Meridian Drive / Greenville, NC 27834 / tel (252) 757-0333



COMMUNITY CENTER AND GYMNASIUM FOR  
**Alice F. Keene District Park**  
4561 County Home Road, Greenville, NC 27858

Project No.	22207
Date:	December 1, 2022
Drawing no.	A 601