

Roof Plan Notes

- 1) THE GENERAL CONTRACTOR IS RESPONSIBLE FOR ALL VERTICAL PIPE DRAIN LEADERS AND HORIZONTAL DRAINAGE PIPING SYSTEMS TO STORM SEWER CATCH BASINS, PIPE AROUND STRUCTURE AS REQUIRED.
- 2) HORIZONTAL DRAINAGE PIPING BELOW GRADE SHALL BE SDR 35 PIPE. VERIFY ALL INVERT ELEVATIONS AND PIPE SLOPES PRIOR TO INSTALLATION.
- 3) PROVIDE CLEANSOUTS AT ALL PIPE ELBOWS, AT 80' INTERVALS FOR HORIZONTAL DRAINAGE PIPES < 70" & 120' INTERVALS FOR HORIZONTAL DRAINAGE PIPES 72" AND ABOVE.
- 4) REFER TO PLUMBING AND MECHANICAL PLANS FOR PIPE PENETRATION LOCATIONS. GENERAL CONTRACTOR IS RESPONSIBLE FOR FLASHING ALL PIPE PENETRATIONS BY OTHER PRIME CONTRACTORS.
- 5) SANITARY SEWER HAS RIGHT-OF-WAY OVER STORM DRAINAGE PIPING. REFER TO PLUMBING DRAWINGS. CONSTRUCT CONCRETE/MASSORY CONFLICT / JUNCTION BOX AS REQUIRED SEE PLUMBING AND CIVIL DRAWINGS.
- 6) COORDINATE CONDENSATE PIPING CONNECTIONS TO STORM DRAINAGE. REFER TO HVAC DRAWINGS.
- 7) GENERAL CONTRACTOR TO PRIME AND PAINT (2) COATS ALL VENTS, PIPES AND FLUES EXTENDING THROUGH ROOF. MATCHING COLOR. CHEMICALLY CLEAN METAL AND METAL GALVANIZED METAL WITH SPECIAL PRIMER AS SPECIFIED.
- 8) PAINT ALL EXPOSED PVC BOOTS AND ROOF DRAIN LEADER AT GUTTER BOIT TRANSITION TO MATCH METAL GUTTER.
- 9) SLOPE ALL HORIZONTAL ROOF DRAINAGE LEADERS AS REQUIRED (1.0% SLOPE MIN.)

GENERAL NOTES

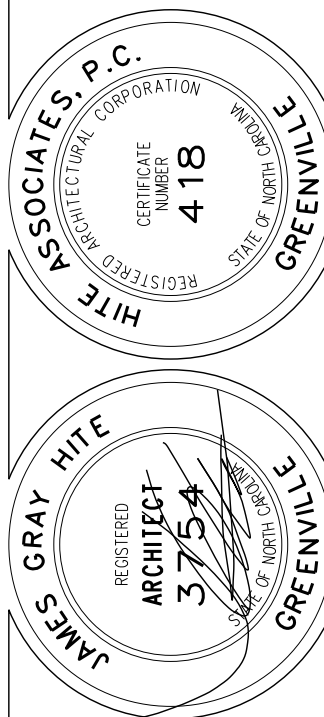
- (1) PROVIDE WALL CONTROL AND EXPANSION JOINTS WHERE SHOWN AND DETAILLED OR, IN PRE-APPROVED, ALTERNATE WALL AND FLOOR JOINT LOCATIONS. PROVIDE JOINTS AT 10' MAXIMUM SPACING IN MASONRY WALLS; BOTH SIDES IN OPENINGS WITH WALL EXCEEDING 5'-0" SEE DETAIL.
- (2) PROVIDE WALL EXPANSION JOINTS AT POINTS AND INTERSECTIONS WHERE INDICATED, INCLUDING AT WALL CORNERS. PROVIDE JOINTS WITH EXPANSION JOINT COMPATIBLE WITH WALL AND EXPOSED SIDE.
- (3) IN ACROUSTICAL TIE CLING SYSTEM SHALL BE 2 x 4 GRID, IN LAYING OUT CEILING; COORDINATE WITH MECHANICAL AND ELECTRICAL DRAWINGS, AND AVOID SPACING LESS THAN 12" ON CENTER.
- (4) PROVIDE EXTERIOR CONCRETE WALLS AND CONCRETE AREAS WITH EXPANSION AND SCORF JOINTS IN PRE-APPROVED LOCATIONS. EXPANSION JOINTS SHALL BE 1/2" WIDE WITH EDGES FLARED 45 DEGREE AND FILL WITH POLYURETHANE. PROVIDE SCORF JOINTS AT WALL CORNERS, INTERSECTIONS, CHANGES IN SLOPE OR DIRECTION, AGAINST EXISTING OR NEW WALLS AND AT WALL CORNERS AT INTERVALS NOT TO EXCEED 10' MAXIMUM. PROVIDE SCORF JOINTS AT DEEP MINIMUM AND RAISED 5/8" SHALL BE PLACED AT INTERVALS NOT TO EXCEED 5 FEET.
- (5) GENERAL CONTRACTOR SHALL CONFIRM CASEWORK, BUILT-IN, AND ACCESSORIES LOCATIONS WITH OTHER TRADES.

QUALITY CONTROL:

- (1) CONSTRUCT SAMPLES AT 4" WALL PANEL WITH INSULATION IN PLACE, SHOWING EXTERIOR BRICK AND INTERIOR WORKSMANSHIP. APPROVED PANEL WILL BE USED AS STANDARD OF QUALITY REQUIRED THROUGHOUT.
- (2) COMPLETE CONSTRUCTION OF ONE EACH OF THE FOLLOWING IS REQUIRED FOR ARCHITECT'S APPROVAL. APPROVED CONSTRUCTION IN EACH CASE WILL BE USED AS STANDARD OF QUALITY REQUIRED THROUGHOUT.
- A. WINDOW SECTION, FITTED AND CALKED.
 - B. ROOF OVERHANG WITH GUTTER.
 - C. ROOF COPING SECTIONS (2 WITH Joints).
 - D. CLASSROOM CARPET, RUBBER BASE, PAINTING/STAINING, MARKERBOARDS AND TACKBOARDS, CEILING.
- (3) SEE SPECIFICATIONS FOR ALLOWABLE CONSTRUCTION TOLERANCES. THESE WILL BE THE FIRM'S AND ENFORCED.

[illegible]

Hite associates
ARCHITECTURE / PLANNING / TECHNOLOGY
2600 Meridian Drive / Greenville, NC 27834 / tel (252) 757-0333



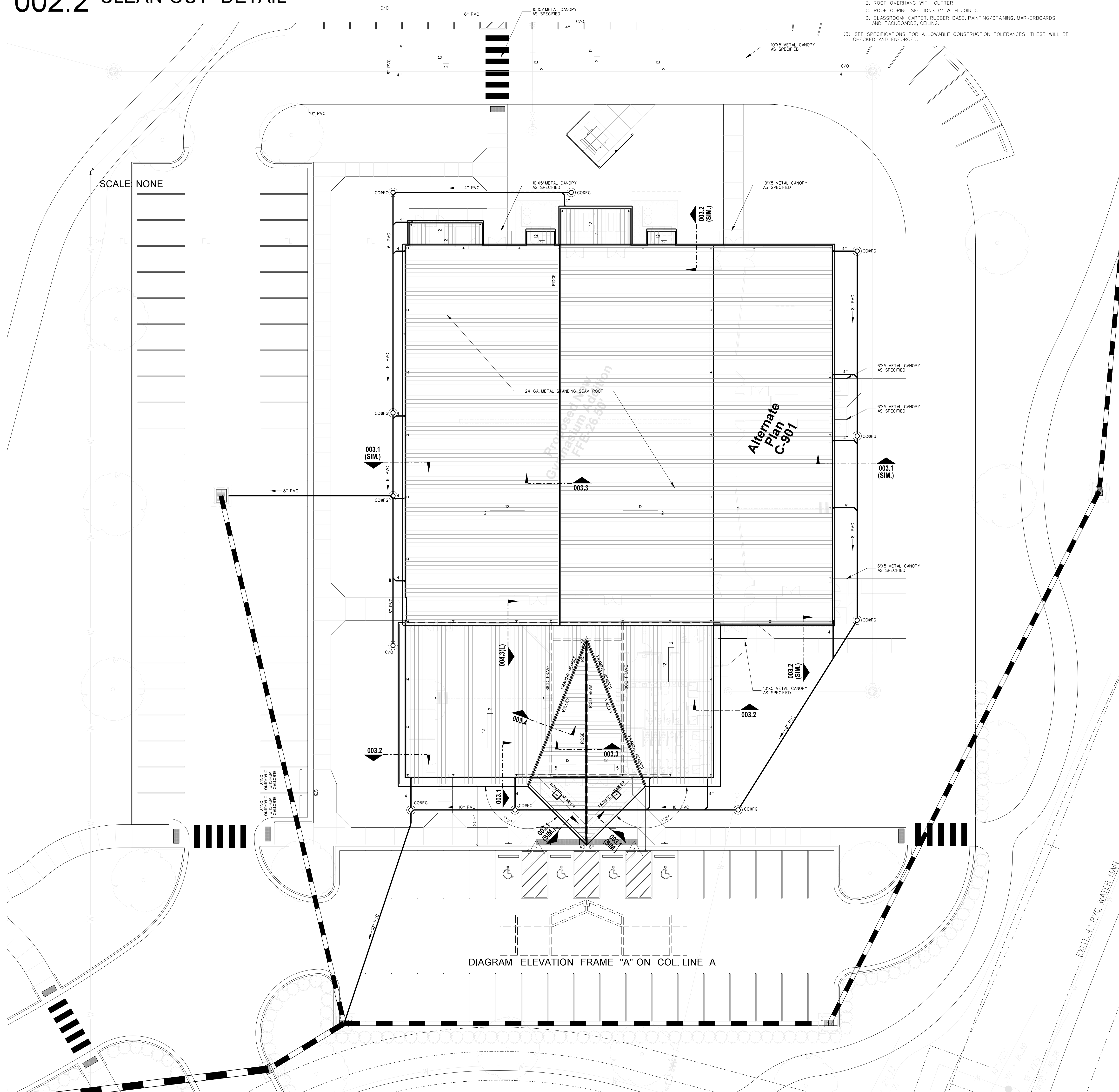
COMMUNITY CENTER AND GYMNASIUM FOR
Pitt County Office Park
Government Cir., Greenville, NC 27858

Project No. 22246

Date: 31 July 2021

Drawing no.

A
002
ALTERNATE P



002.1 ROOF AND ROOF DRAINAGE PLAN