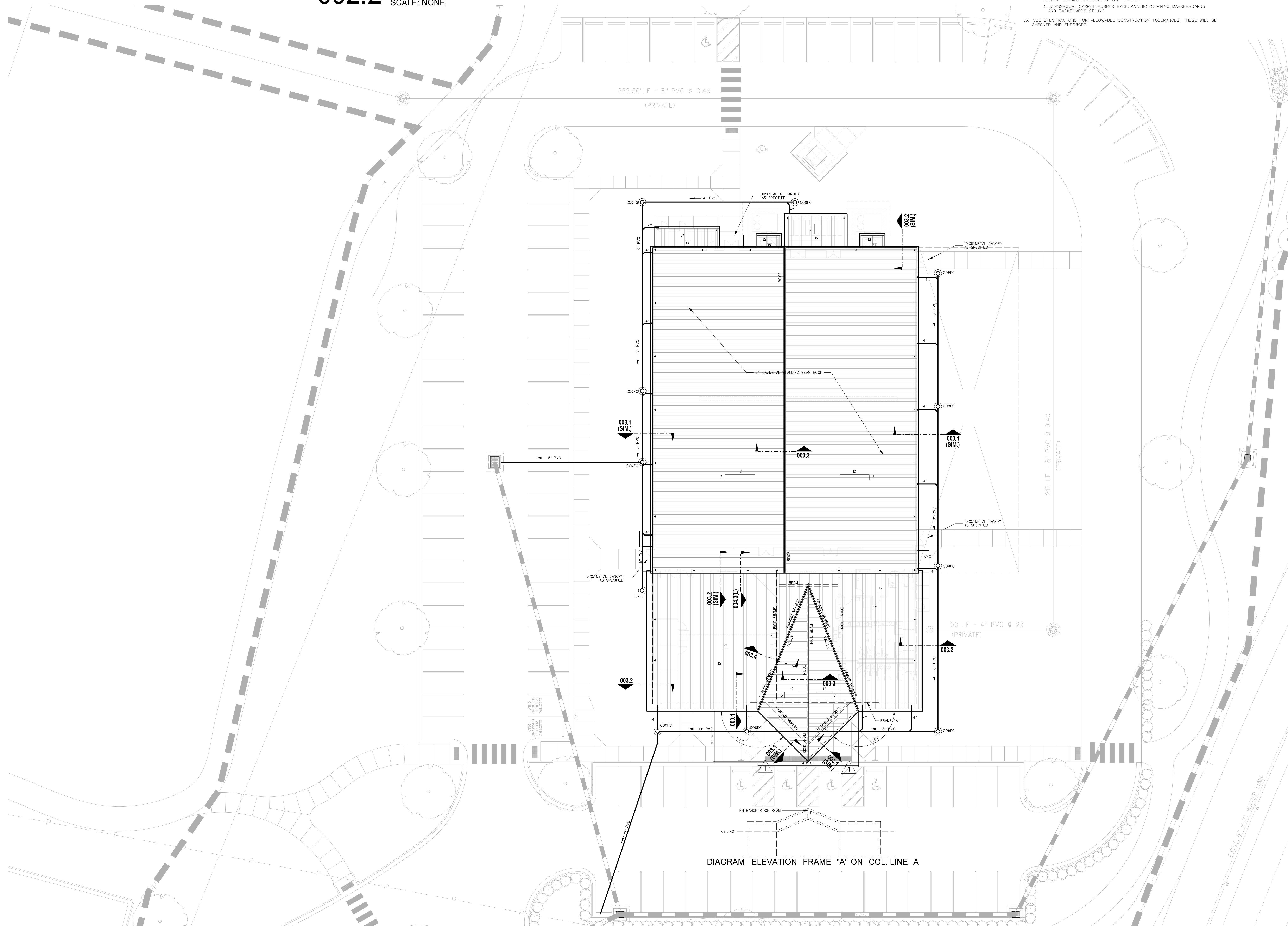


Roof Plan Notes

1. THE GENERAL CONTRACTOR IS RESPONSIBLE FOR ALL VERTICAL ROOF DRAIN LEADERS AND HORIZONTAL DRAINAGE PIPING SYSTEMS TO STORM SEWER CATCH BASINS, PIPE AROUND STRUCTURE AS REQUIRED.
2. HORIZONTAL DRAINAGE PIPING BELOW GRADE SHALL BE SDR 35 PIPE. VERIFY ALL INVERT ELEVATIONS AND PIPE SLOPES PRIOR TO INSTALLATION.
3. PROVIDE CLEANSATS AT ALL PIPING ELBOWS, AT 80' INTERVALS FOR HORIZONTAL DRAINAGE PIPES < 10" & 40' INTERVALS FOR 12" TO 24" HORIZONTAL DRAINAGE PIPES 10" & ABOVE.
4. REFER TO PLUMBING AND MECHANICAL PLANS FOR ROOF PENETRATION LOCATIONS. GENERAL CONTRACTOR IS RESPONSIBLE FOR FLASHING ALL ROOF PENETRATIONS BY OTHER PRIME CONTRACTORS.
5. SANITARY SEWER HAS RIGHT-OF-WAY OVER STORM DRAINAGE PIPING. REFER TO PLUMBING DRAWINGS, CONSTRUCT CONCRETE/MASSORY CONDUIT / JUNCTION BOX AS REQUIRED SEE PLUMBING AND CIVIL DRAWINGS.
6. COORDINATE CONDENSATE PIPING CONNECTIONS TO STORM DRAINAGE. REFER TO HVAC DRAWINGS.
7. GENERAL CONTRACTOR TO PRIME AND PAINT (2) COATS ALL VENTS, PIPES, AND FLUES EXTENDING THROUGH ROOF, MATCHING COLOR, CHEMICALLY CLEAN METAL AND PRIME GALVANIZED METAL WITH SPECIAL PRIMER AS SPECIFIED.
8. PAINT ALL EXPOSED PVC BOOTS AND ROOF DRAIN LEADER AT GUTTER BOSS TRANSITION TO MATCH METAL GUTTER.
9. SLOPE ALL HORIZONTAL ROOF DRAINAGE LEADERS AS REQUIRED (1.0% SLOPE MIN).

1. PROVIDE WALL CONTROL AND EXPANSION JOINTS WHERE SHOWN AND DETAILED OR, IN PRE-APPROVED LOCATIONS, SHALL BE FULLY FILLED WITH EXPANSION JOINT FILLER TO EXCEED 1/2" MIN. JOINTS IN MASONRY WALLS BOTH SIDES IN OPENINGS WITH WIDTH EXCEEDING 5'-0" SEE DETAIL.
2. PROVIDE WALL CONTROL AND EXPANSION JOINTS AT POINTS AND INTERSECTIONS WHERE INDICATED, AND FULLY FILLED WITH EXPANSION JOINT FILLER TO EXCEED 1/2" MIN. JOINTS IN MASONRY WALLS BOTH SIDES IN OPENINGS WITH WIDTH EXCEEDING 5'-0" SEE DETAIL.
3. PROVIDE AN ACoustICAL FLOr CEILING SYSTEM SHALL BE 2" x 30" RIGID, IN LAYING OUT CEILING, COORDINATE WITH MECHANICAL AND ELECTRICAL DRAWINGS, AND AVOID AREAS OF LESS-THAN-4' CLEARANCE.
4. PROVIDE EXTERIOR CONCRETE WALLS AND CONCRETE AREAS WITH EXPANSION AND SLOTTED JOINTS IN PRE-APPROVED LOCATIONS. EXPANSION JOINTS SHALL BE 1/2" WIDE WITH EDGES FINISHED WITH 1/2" RAD. AND FILL WITH RUBBER STOP AND POLYURETHANE FILLER. PROVIDE JOINTS AT CORNERS, INTERSECTIONS, CHANGES IN SLOPE OR DIRECTION, AROUND NEW WALLS, AND AT OTHER LOCATIONS AS DETERMINED BY THE CONTRACTOR. PROVIDE JOINTS AT 10' MAX. DEEP MINIMUM AND ROUNDED 7/8" RADIUS, AND SHALL BE PLACED AT INTERVALS NOT TO EXCEED 5 FEET.
5. EXISTING CONTRACTOR SHALL CONFORM CASEWORK BUILT-UP AND ACCESSORIES LOCATIONS WITH OTHERS.

- (1) CONSTRUCT SAMPLE x 4' WALL PANEL WITH INSULATION IN PLACE, SHOWING EXTERIOR BRICK AND INTERIOR WORKMANSHIP. APPROVED PANEL WILL BE USED AS STANDARD OF QUALITY REQUIRED THROUGHOUT.
- (2) COMPLETE CONSTRUCTION OF ONE EACH OF THE FOLLOWING IS REQUIRED FOR ARCHITECTS APPROVAL. APPROVED CONSTRUCTION IN EACH CASE WILL BE USED AS STANDARD OF QUALITY REQUIRED THROUGHOUT.
 - A. WINDOW SECTION, FITTED AND CALIBRATED.
 - B. ROOF OVERHANG WITH GUTTER.
 - C. ROOF COPING SECTIONS, 2 IN. JOINT.
 - D. CLASSROOM CARPET, RUBBER GAGE, PAINTING/STAINING, MARKERBOARDS AND TACKBOARDS, CEILING.
- (3) SEE SPECIFICATIONS FOR ALLOWABLE CONSTRUCTION TOLERANCES. THESE WILL BE CHECKED AND ENFORCED.



001.1 ROOF AND ROOF DRAINAGE PLAN