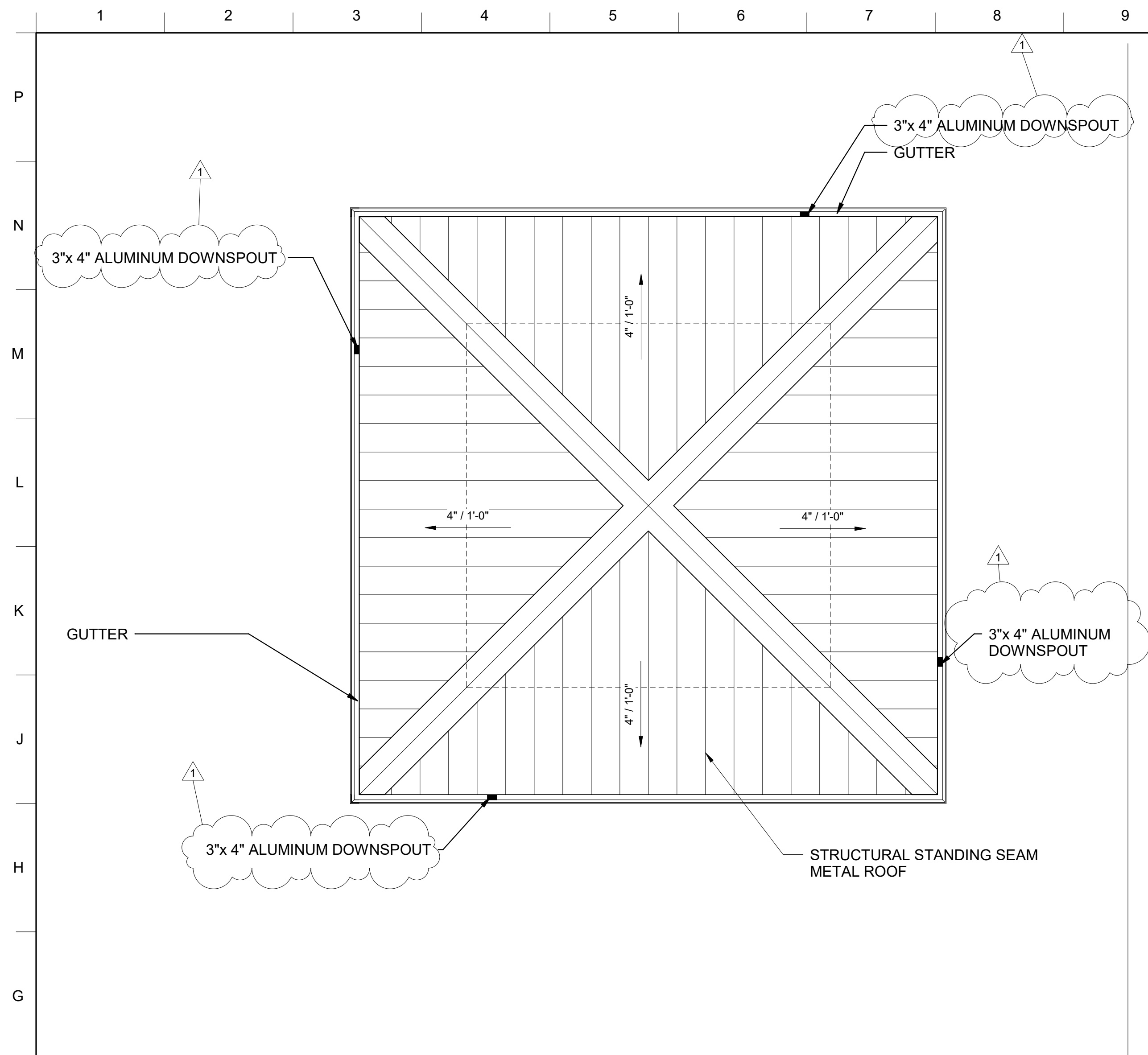
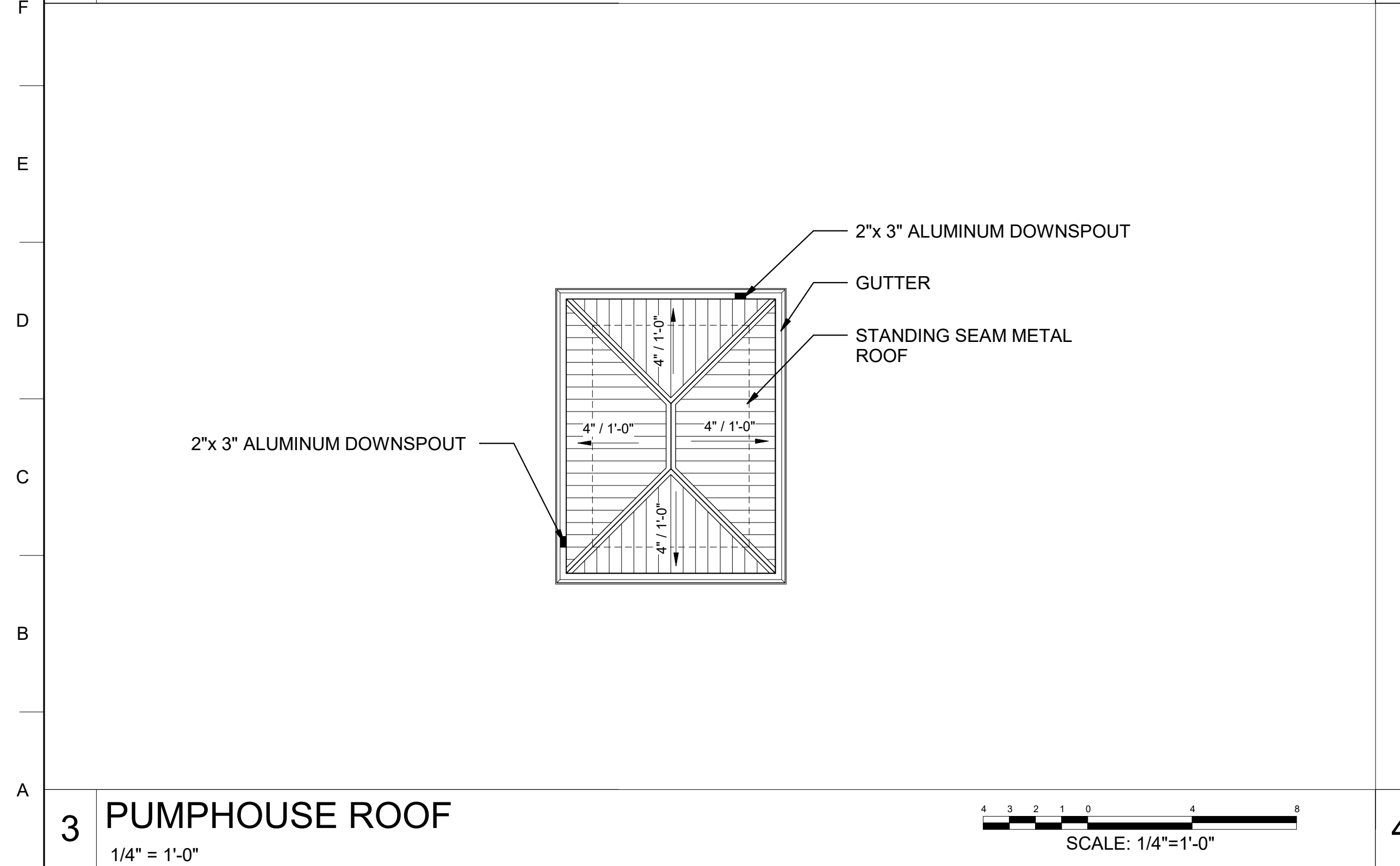
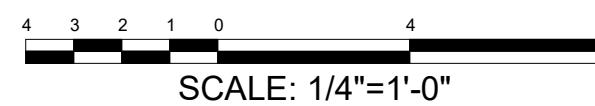


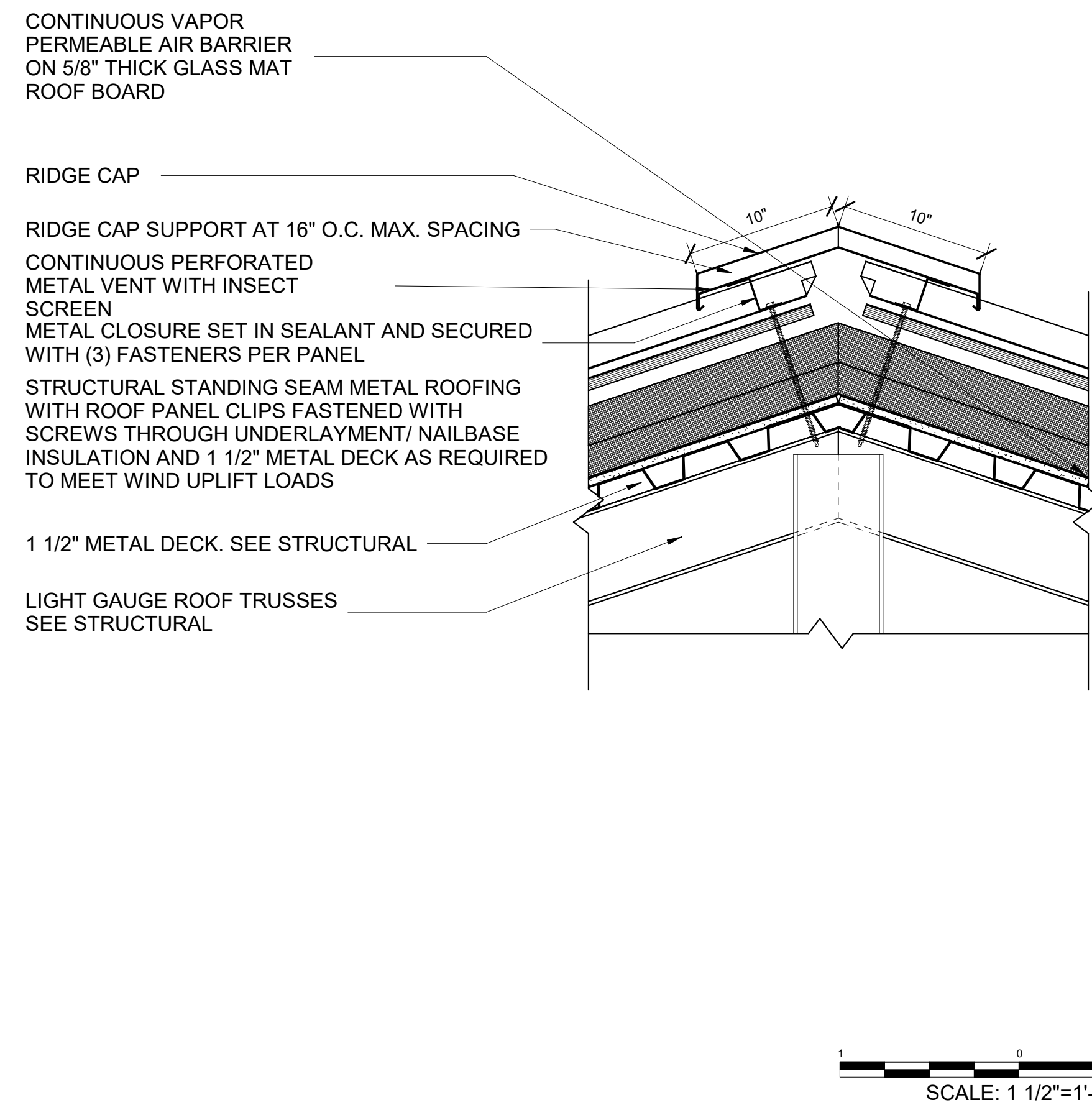
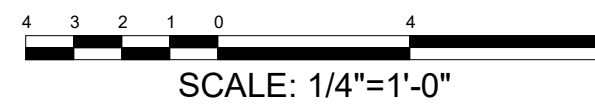
	1	2	3	4	5	6	7	8	9	10	11	12	13	14	15	16	17	18	19	20	
	INDEX OF DRAWINGS CONTINUED																				
P		SHEET ID. TITLE					SHEET ID. TITLE					SHEET ID. TITLE									
		CP229	PLAN & PROFILE - MOVING ARMOR TARGET (MAT) - M-06					ES508	EMPLACEMENT DETAILS - STATIONARY INFANTRY TARGET (SIT) 3-MAN SIT PLAN AND CLUSTER												
		CP502	ROAD SECTIONS					ES509	EMPLACEMENT DETAILS - MOVING INFANTRY TARGET(MIT)												
		CP503	ROAD SECTIONS					ES510	EMPLACEMENT DETAILS - STATIONARY ARMOR TARGET (SAT)												
		CP504	CONCRETE PAVING DETAILS					ES511	EMPLACEMENT DETAILS - MOVING ARMOR TARGET (MAT)												
N		CP505	CONCRETE PAVING JOINT LAYOUTS					ES512	EMPLACEMENT DETAILS - MOVING ARMOR TARGET (MAT) EMPLACEMENT PLAN AND DETAILS												
		CP506	CONCRETE PAVING JOINT LAYOUTS					ES513	EMPLACEMENT DETAILS												
		CS504	PRECAST CONCRETE BLOCK DETAILS					ES514	BUILDING FACADE FLOOR PLANS												
		CS505	DEFILADE DETAILS					ES515	ELECTRICAL FACADE DETAILS												
		CS506	DEFILADE DETAILS					ES516	DOWNRANGE POWERCENTER EMPLACEMENT DETAILS												
		CS507	DEFILADE DETAILS					ES517	TYPICAL DOWNRANGE POWERCENTER PLAN WITH STATIONARY ARMOR TARGET (SAT)												
		CS508	REVERSE SLOPE BATTLE POSITION DETAILS					ES518	DOWNRANGE POWERCENTER PLAN WITH STATIONARY ARMOR TARGET (SAT) PC09												
		CS509	REVERSE SLOPE BATTLE POSITION DETAILS					ES519	ELECTRICAL DETAILS - RANGE LIMIT MARKER												
M		CS510	REVERSE SLOPE BATTLE POSITION DETAILS					ES520	ELECTRICAL DETAILS - BORESIGHT												
		CS511	STATIONARY ARMOR TARGET DETAILS					ES521	ELECTRICAL DETAILS - FLIR CAMERA TOWER												
		CS512	POWER CENTER & STATIONARY ARMOR TARGET w/ POWER CENTER DETAILS					ES522	ELECTRICAL TRENCHING DETAILS												
		CS513	STATIONARY ARMOR TARGET DETAILS					ES606	ELECTRICAL SINGLE LINE DIAGRAM												
		CS514	MOVING ARMOR TARGET DETAILS					ES607	ELECTRICAL TARGET RISER DIAGRAM												
		CS515	MOVING ARMOR TARGET DETAILS					ES608	ELECTRICAL TARGET PANEL SCHEDULES												
		CS516	STATIONARY INFANTRY TARGET DETAILS					ES609	ELECTRICAL TARGET PANEL SCHEDULES												
		CS517	STATIONARY INFANTRY TARGET CLUSTER DETAILS					ES610	ELECTRICAL TARGET PANEL SCHEDULES												
L		CS518	STATIONARY INFANTRY TARGET CLUSTER DETAILS					TN400	ENLARGED DOWNRANGE COMMUNICATIONS SITE PLAN												
		CS519	MOVING INFANTRY TARGET DETAILS					TN503	EMPLACEMENT DETAILS - COPPER DATA CABLE BREAKOUT BOX (DBB-C)												
		CS520	STATIONARY & MOVING INFANTRY TARGET CLUSTER DETAILS					TN504	EMPLACEMENT DETAILS - FIBER DATA CABLE BREAKOUT BOX (DBB-F)												
		CS521	MACHINE GUN BUNKER DETAILS					TN505	EMPLACEMENT DETAILS - MASTER TARGET DATA PANEL TWISTED PAIR CABLES												
		CS522	MACHINE GUN BUNKER DETAILS					TN506	EMPLACEMENT DETAILS - FACADE MASTER TARGET DATA PANEL TWISTED PAIR CABLES												
		CS523	TRENCH DETAILS					TN507	EMPLACEMENT DETAILS - TARGET DATA PANEL CAT.CAT.6 CABLES												
		CS524	TRENCH DETAILS					TN508	COMMUNICATIONS OUTLET DETAILS												
K		CS525	CAMERA TOWER DETAILS					TN509	COMMUNICATIONS CABLE TERMINATIONS												
		CS526	RANGE LIMIT MARKER AND BORESIGHT PANEL DETAILS					TN604	RANGE DATA SINGLE LINE DIAGRAM												
		CS527	BORESIGHT/SCREENING PAD & SYNC RAMP DETAILS																		
		CS528	DRAINAGE DETAILS																		
		CS529	SLOPED PAVED HEADWALL DETAILS																		
		CS530	SECURITY GATE DETAILS																		
		CS531	FLARED END SECTION DETAILS																		
		CS600	DATA CHARTS - ROADS																		
J		CS601	DATA CHARTS - ROADS																		
		CS602	DATA CHARTS - ROADS																		
		CS603	DATA CHARTS - ROADS																		
		CS604	DATA CHARTS - ROADS																		
		CS605	DATA CHARTS - ROADS																		
		CS606	DATA CHARTS - ROADS																		
		CS607	DATA CHARTS - ROADS																		
		CS608	DATA CHARTS - ROADS																		
H		CS609	DATA CHARTS - ROADS																		
		CS610	DATA CHARTS - MATS																		
		CS611	DATA CHARTS - CLEARING COORDINATES																		
		CS612	DATA CHARTS - SATS AND POWER CENTERS																		
		CS613	DATA CHARTS - SITS & MITS																		
		CS614	DATA CHARTS - DEFILADES & REVERSE SLOPE BATTLE POSITION																		
		CS615	DATA CHARTS - MISCELLANEOUS																		
G		CU200	CULVERT PROFILES																		
		CU201	CULVERT PROFILES																		
		CU202	CULVERT PROFILES																		
		CU203	CULVERT PROFILES																		
		CU204	CULVERT PROFILES																		
		CU205	CULVERT PROFILES																		
		CU206	CULVERT PROFILES																		
F		CU207	CULVERT PROFILES																		
		CU208	CULVERT PROFILES																		
		CU209	CULVERT PROFILES																		
		CU210	CULVERT PROFILES																		
		CU211	CULVERT PROFILES																		
		CU212	CULVERT PROFILES																		
		CU213	CULVERT PROFILES																		
		CU214	CULVERT PROFILES																		
E		CU215	CULVERT PROFILES																		
		CU600	DATA CHARTS - CULVERTS																		
		S-011	GENERAL NOTES																		
		S-012	GENERAL NOTES (CONTINUED)																		
		S-501	TYPICAL DETAILS																		
		SB100	SINGLE-STORY FACADE FOUNDATION AND FLOOR PLANS																		
		SB110	URBAN CLUSTER FOUNDATION AND FLOOR PLANS																		
D		SB301	SECTIONS																		
		SF110	URBAN CLUSTER ROOF FRAMING PLANS																		
		SF301	SECTIONS																		
		AE001	ARCHITECTURAL LEGEND AND SYMBOLS																		
		AE100	SINGLE-STORY FACADE FLOOR PLANS																		
		AE110	URBAN CLUSTER MISCELLANEOUS FLOOR PLANS																		
		AE200	SINGLE-STORY FACADE EXTERIOR ELEVATIONS																		
		AE210	URBAN CLUSTER EXTERIOR ELEVATIONS																		
		AE211	URBAN CLUSTER EXTERIOR ELEVATIONS																		
C		AE300	SINGLE-STORY FACADE SECTIONS AND DETAILS																		
		AE310	URBAN CLUSTER SECTIONS AND DETAILS																		
		AE510	URBAN CLUSTER DETAILS																		
		ES002	OVERALL ELECTRICAL SITE PLAN																		
		ES135	ELECTRICAL SITE PLAN																		
		ES136	ELECTRICAL SITE PLAN																		
		ES137	ELECTRICAL SITE PLAN																		
		ES138	ELECTRICAL SITE PLAN																		
		ES139	ELECTRICAL SITE PLAN																		
		ES140	ELECTRICAL SITE PLAN																		
		ES141	ELECTRICAL SITE PLAN																		
		ES142	ELECTRICAL SITE PLAN																		
		ES143	ELECTRICAL SITE PLAN																		
		ES505	EMPLACEMENT DETAILS - STATIONARY INFANTRY TARGET (SIT)																		
		ES506	EMPLACEMENT DETAILS - STATIONARY INFANTRY TARGET (SIT) RUBBER FLAP																		
A		ES507	EMPLACEMENT DETAILS - STATIONARY INFANTRY TARGET (SIT) CLUSTERS																		
	</																				



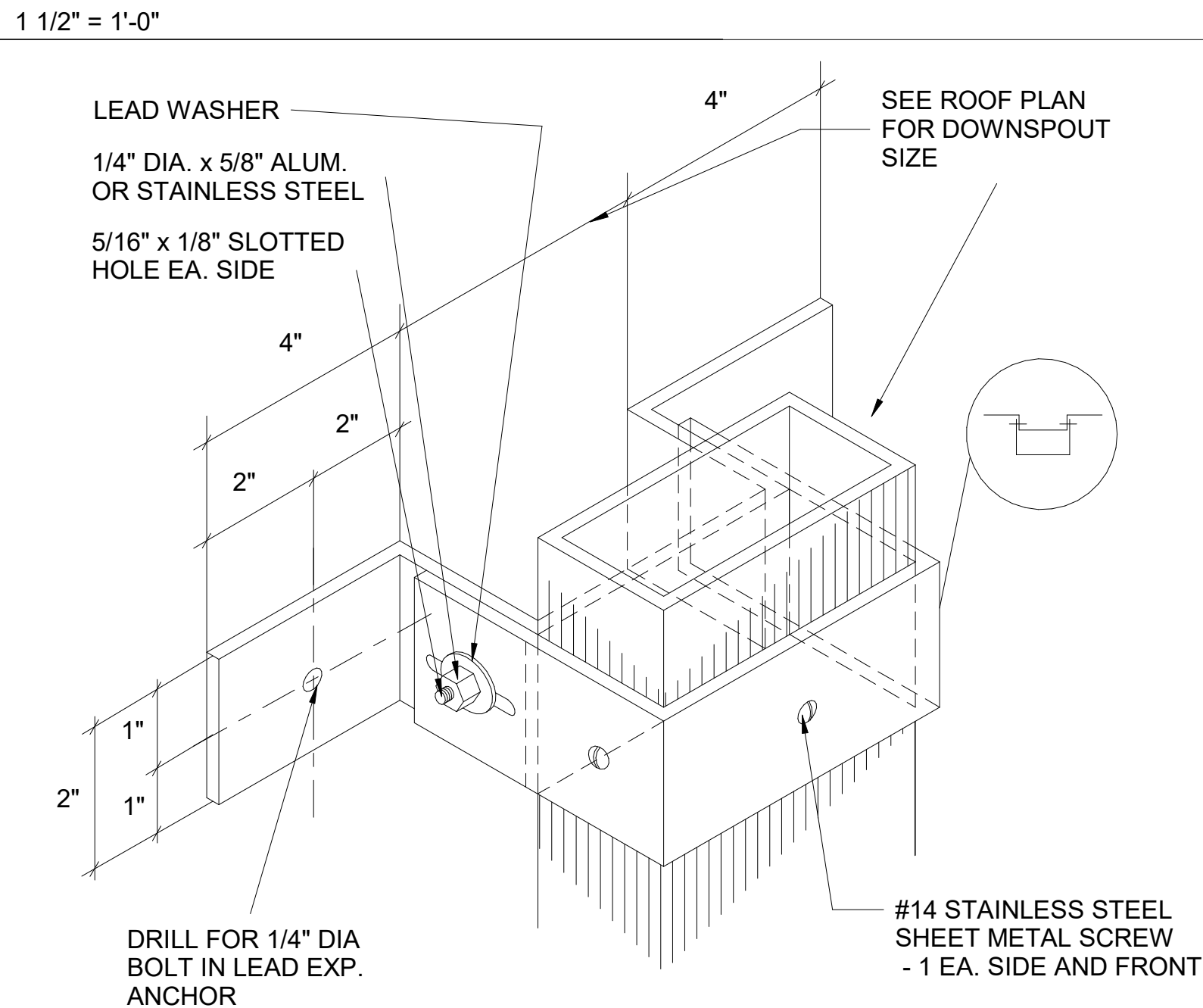
1 ROOF PLAN



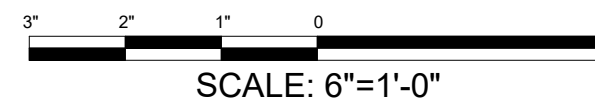
3 PUMPHOUSE ROOF
1/4" = 1'-0"



2 TYPICAL RIDGE/ HIP VENT -SSMR (VENTED)
1 1/2" = 1'-0"

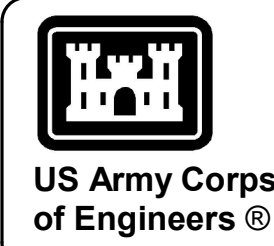


4 DOWNSPOUT STRAP



GENERAL NOTES

1. EXTERIOR DIMENSIONS ARE FROM FACE OF INSULATED METAL PANEL. INTERIOR DIMENSIONS ARE FROM FACE OF STUD, UNLESS NOTED OTHERWISE.
2. SEE CIVIL DRAWINGS FOR FINISHED FLOOR AND FINISHED GRADE ELEVATIONS. SEE STRUCTURAL DRAWINGS FOR FOUNDATION PLANS AND FLOOR SLABS.
3. SEE MECHANICAL DRAWINGS FOR LOCATION OF ALL MECHANICAL EQUIPMENT. COORDINATE WITH MECHANICAL FOR EXACT LOCATION AND SIZES OF ALL REQUIRED REINFORCED CONCRETE EQUIPMENT PADS, TYPICAL.

[illegible]

U.S. ARMY CORPS OF ENGINEERS SAVANNAH DISTRICT 100 W. OGLETHORPE AVE. SAVANNAH GA 31401	DESIGN BY: T. ODELL	ISSUE DATE: JUNE 2023
	DRAWN BY: T. ODELL	SOLICITATION NO.: W912 HIN-24-B-3001
	CHECKED BY:	CONTRACT NO.:
	SUBMITTED BY:	CATEGORY CODE:
	SIZE: JDEALCON	178-65-01
	ANSI D	FILE NAME:

FORT LIBERTY, NORTH CAROLINA
AUTOMATED MULTIPURPOSE FILING RANGE (MPFR)
FY23, PN 96182
VOLUME 2 - BUILDING

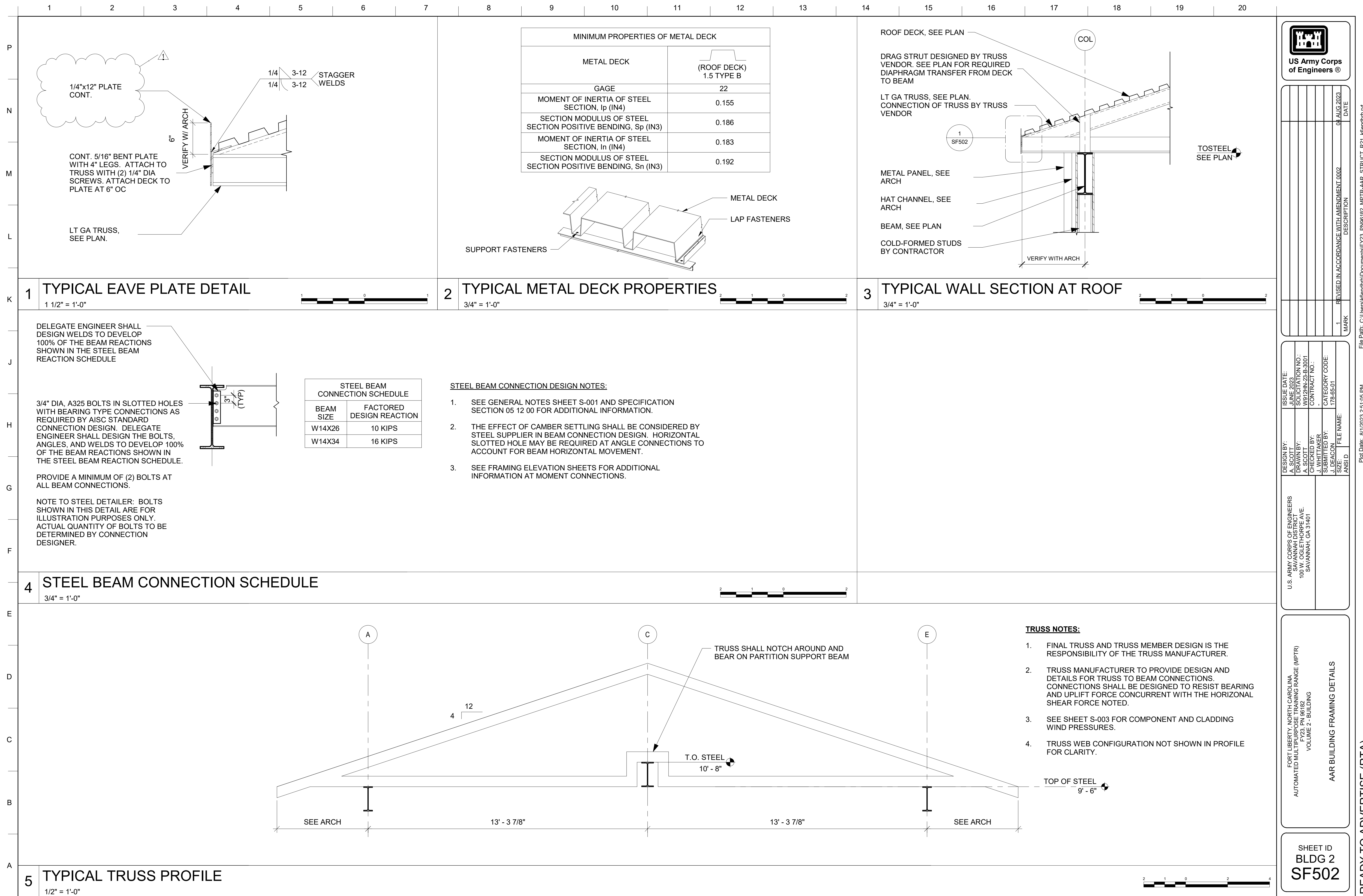
CONTROL TOWER ROOF PLAN & DETAILS

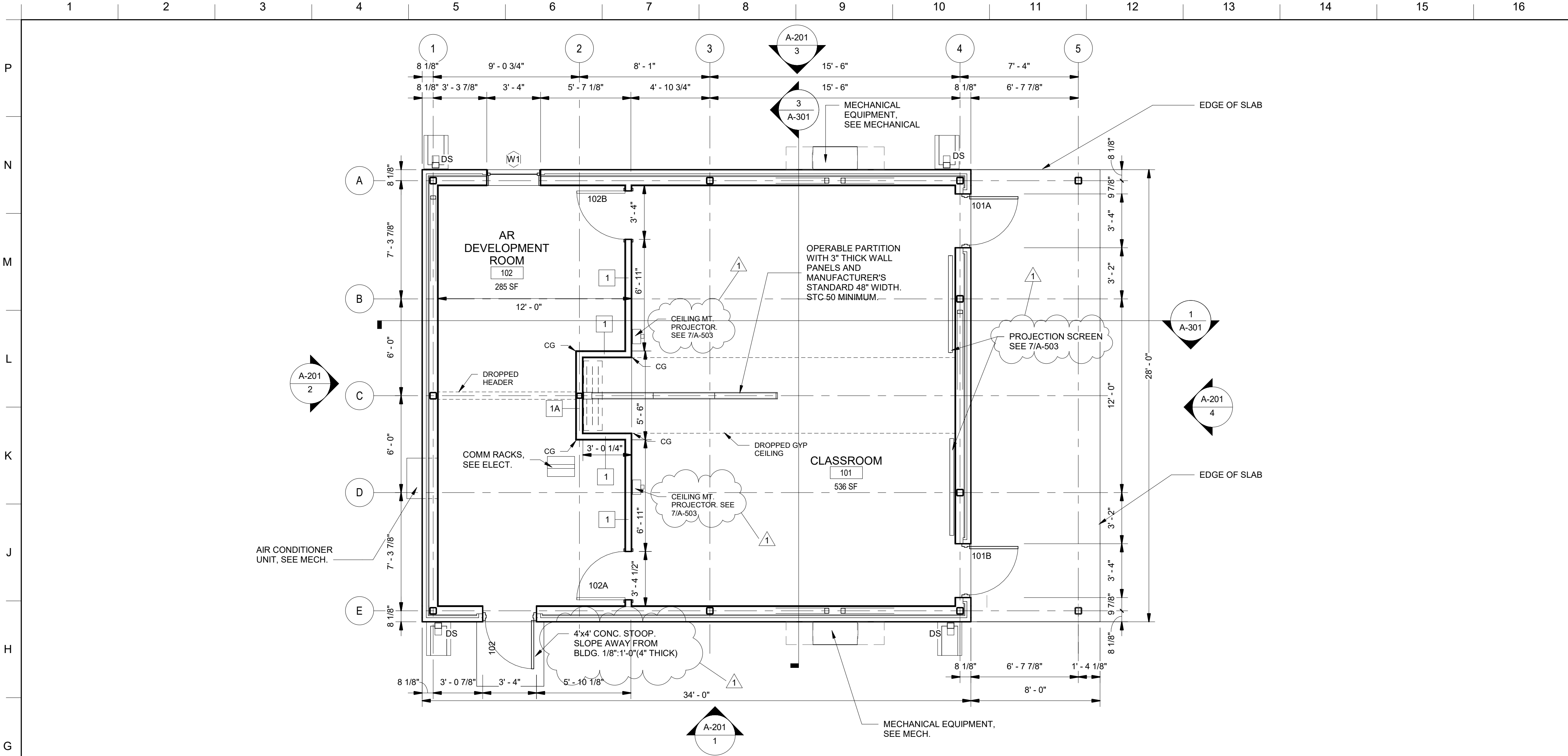
SHEET ID
BLDG 1
A-103

File Path: C:\Users\K6ENXTO9\Documents\EV23 PN96182 MPTR-TOWER ARCH R21 K6ENXTO9 M

Plot Date: 8/3/2023 12:12:18 PM

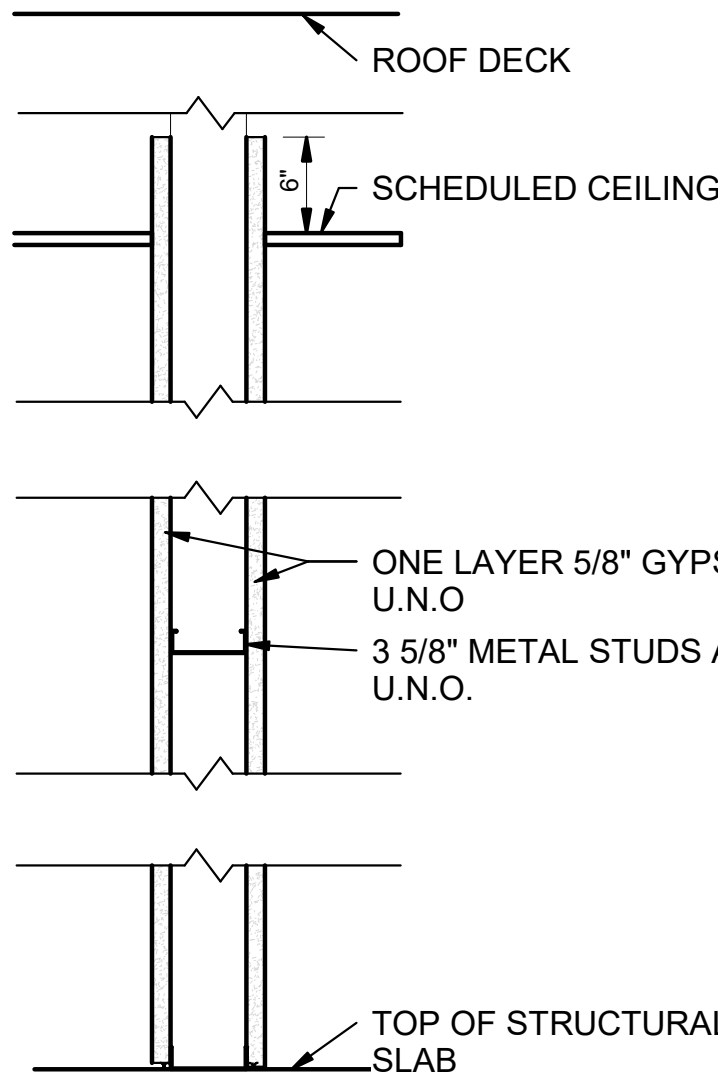
READY TO ADVERTISE (RTA)





1 FLOOR PLAN

1/4" = 1'-0"

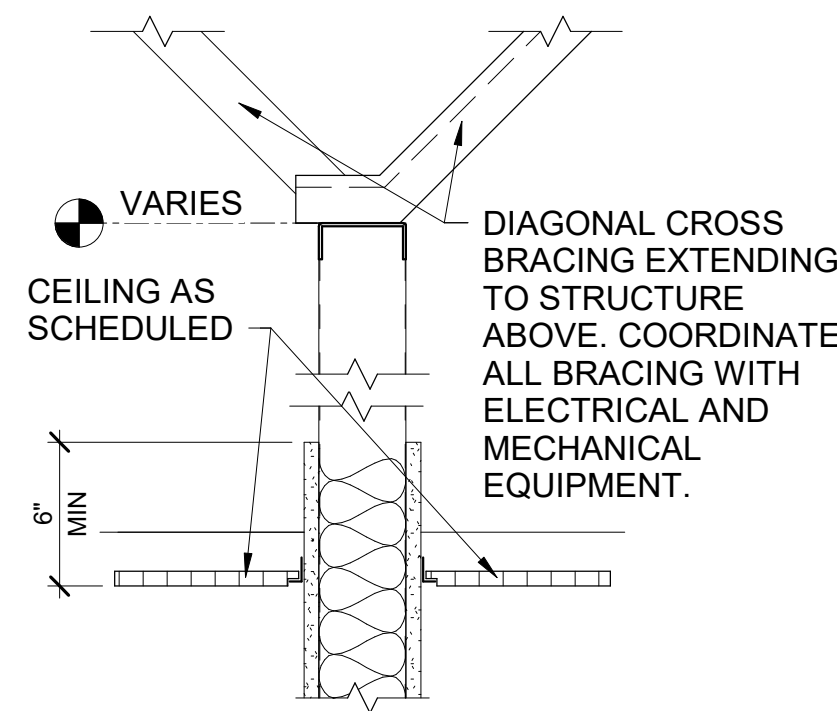


PARTITION TYPE 1 - 3 5/8" METAL STUD NON FIRE RATED PARTITION

PARTITION TYPE 1A - 4" METAL STUD NON FIRE RATED PARTITION

2 PARTITION TYPE 1

NOT TO SCALE



3 TYP ABOVE WALL TERMN.

NOT TO SCALE

GENERAL SHEET NOTES

1. EXTERIOR DIMENSIONS ARE FROM FACE OF INSULATED METAL PANELS, INTERIOR DIMENSIONS ARE FROM FACE OF STUD UNLESS NOTED OTHERWISE.
2. SEE CIVIL DRAWINGS FOR FINISHED FLOOR AND FINISHED GRADE ELEVATIONS. SEE STRUCTURAL DRAWINGS FOR FOUNDATION PLANS AND FLOOR SLABS.
3. SEE MECHANICAL DRAWINGS FOR LOCATION OF ALL MECHANICAL EQUIPMENT. COORDINATE WITH MECHANICAL FOR EXACT LOCATION AND SIZES OF ALL REQUIRED REINFORCED CONCRETE EQUIPMENT PADS, TYPICAL.

FLOOR PLAN NOTES

1. SLOPE ALL EXTERIOR SLABS 1/8" PER FOOT FROM BUILDING FACE TO SLAB EDGE. SLOPE ALL INTERIOR SLABS TO FLOOR DRAINS AS INDICATED. COORDINATE WITH STRUCTURAL.

FLOOR PLAN LEGEND

- 3 WINDOW TAG
- # WALL TAG
- 101 DOOR TAG
- CG CORNER GUARD
- CSB CONCRETE SPLASH BLOCK
- DS DOWNSPOUT
- FEC FIRE EXTINGUISHER CABINET
- PS PROJECTION SCREEN

GROSS BUILDING AREA

GROSS BUILDING AREA PER IBC=

FIRST FLOOR 952 SF
TOTAL 952 SF

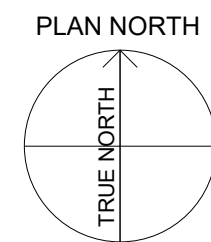
GROSS BUILDING AREA PER UFC 3-101-01 =

FIRST FLOOR 952 SF + 112 (1/2 EXT. COVERED) 1,064 SF
TOTAL 1,064 SF

GROSS FLOOR AREA PER NFPA 101
(FLOOR AREA INSIDE EXTERIOR WALLS):

FIRST FLOOR 832 SF
TOTAL 832 SF

NORTH ARROW

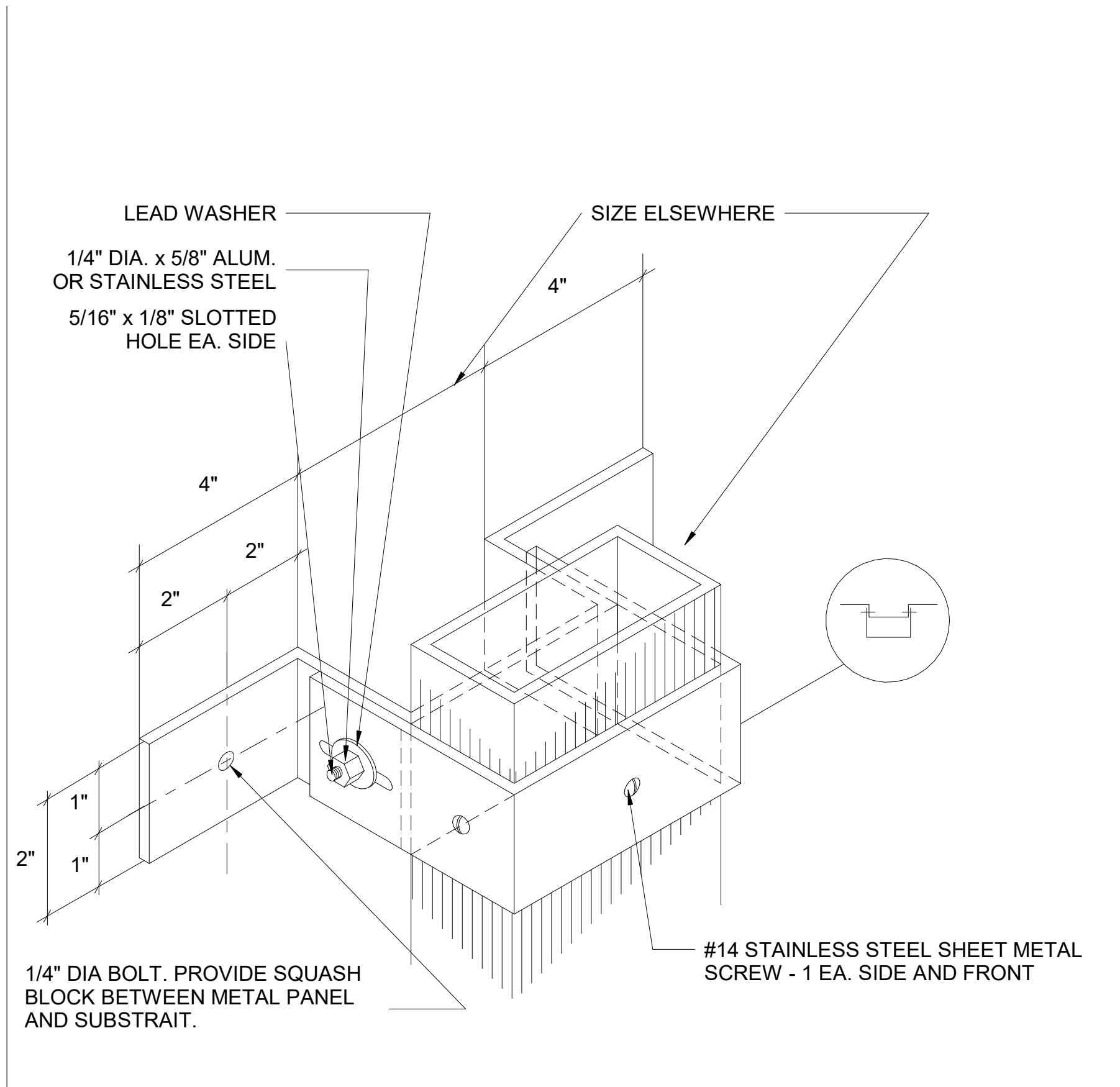


DATE	DESCRIPTION	MARK
04 AUG 2023	REVISED IN ACCORDANCE WITH AMENDMENT 0002	1

DESIGN BY: T. ODELL	ISSUE DATE: JUNE 2023
DRAWN BY: T. ODELL	SOLICITATION NO.: W912HN-23-B-3001
CHECKED BY: P. SULLIVAN	CONTRACT NO.:
SUBMITTED BY: J. DEACON	CATEGORY CODE: 17B-65-01
FILE NAME: ANSI.D	

FORT LIBERTY, NORTH CAROLINA AUTOMATED MULTIPURPOSE TRAINING RANGE (MPTR) FY23, PN 96162 VOLUME 2 - BUILDING	AAR BUILDING FLOOR PLAN
---	-------------------------

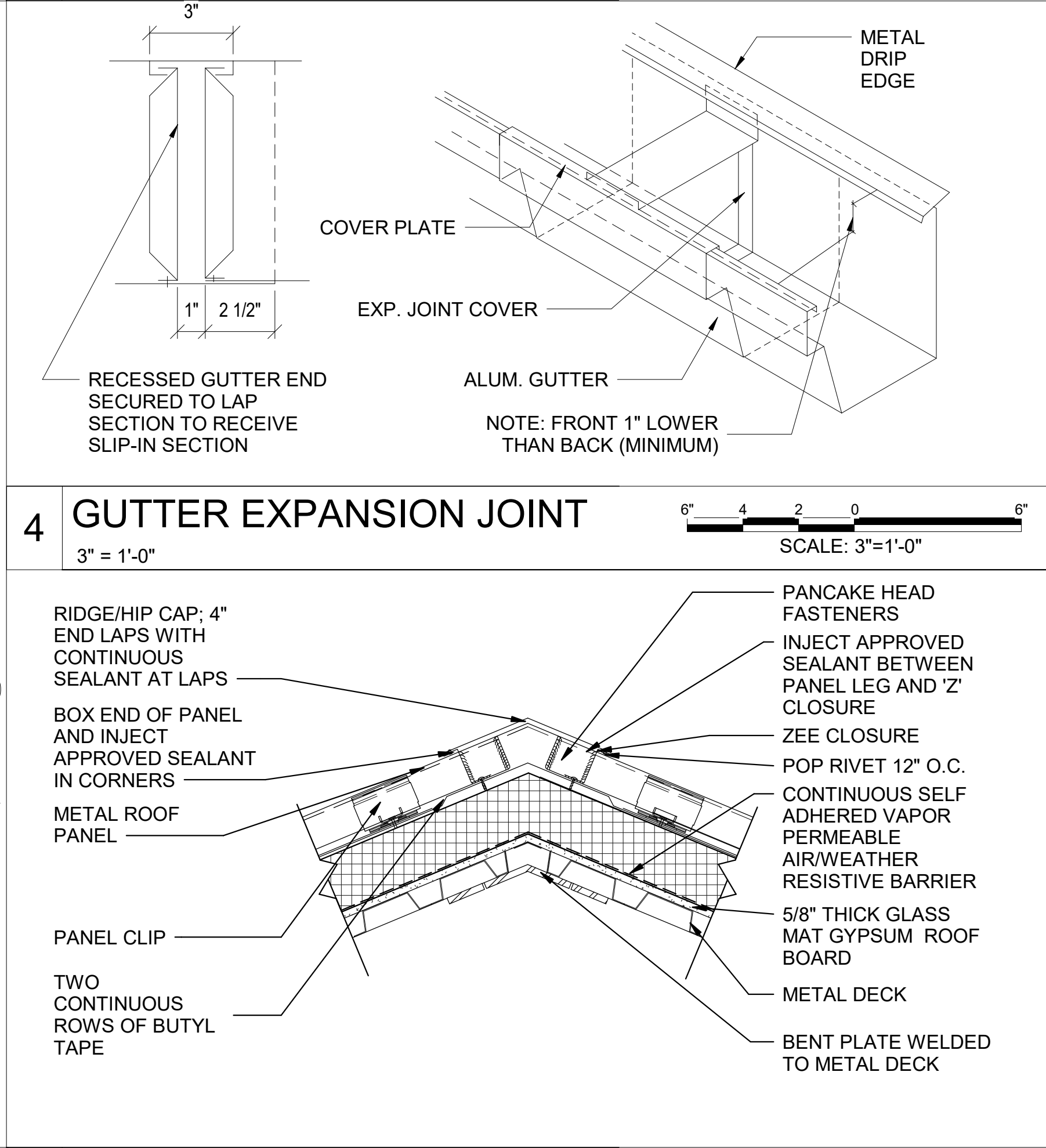
SHEET ID BLDG 2 A-101




2 DOWNSPOUT STRAP DETAIL

6" = 1'-0"





5	RIDGE CAP DETAIL 1 1/2" = 1'-0"	 SCALE: 1 1/2"=1'-0"
---	---	--

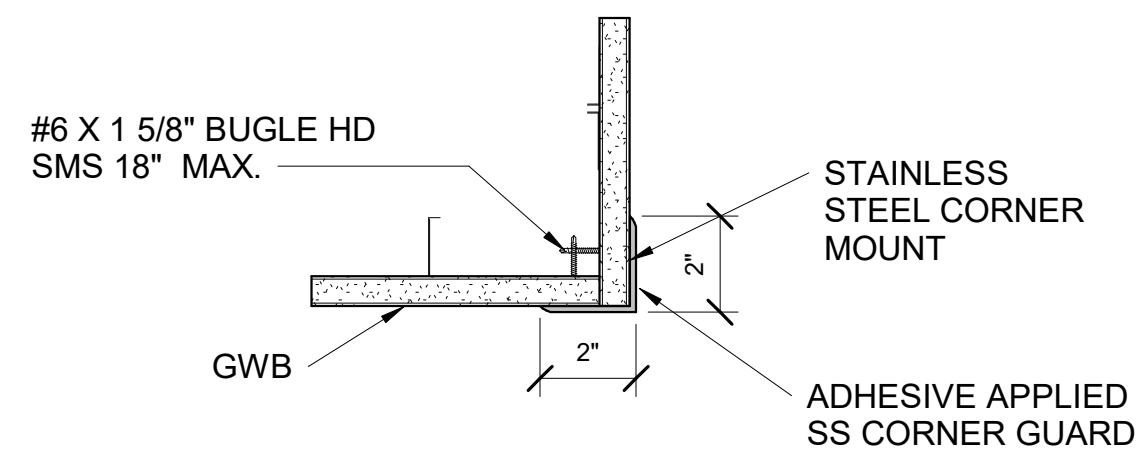
 US Army Corps of Engineers		04 AUG 2023 DATE	
1 MARK		REVIS IN ACCORDANCE WITH AMENDMENT 0002 DESCRIPTION	

U.S. ARMY CORPS OF ENGINEERS SAVANNAH DISTRICT 100 W. OGLETHORPE AVE. SAVANNAH, GA 31401		ISSUE DATE: _____	
DESIGN BY: _____		SOLICITATION NO.: W912HN-23-B-3001	
DRAWN BY: T O'DELL		CONTRACT NO.: _____	
CHECKED BY: P. SULLIVAN		CATEGORY CODE: _____	
SUBMITTED BY: _____		DEACON: 173-65-01	
FILE NAME: _____		ANSI D	

FORT LIBERTY, NORTH CAROLINA
AUTOMATED MULTIPURPOSE TRAINING RANGE (MPTTR)
 FY23, PN 36182
 VOLUME 2 - BUILDING

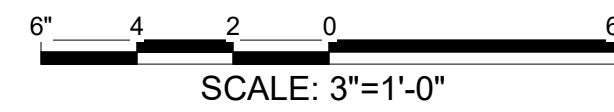
AAR ROOF DETAILS

SHEET ID
BLDG 2
A-501



NOTES:

1. SEE FLOOR PLANS FOR LOCATIONS.
2. ALL SSCG SHALL EXTEND FROM FLOOR TO 6'-0" ABOVE FINISHED FLOOR.



1 0 1
SCALE: 1 1/2"=1'-0"

SCALE: 1"=1'-0"

- 1) HOLD A MIN LOAD OF 50 LBS.
- 2) HAS A WHITE FINISH ESCUTCHEON.
- 3) PROVIDE TWO ELECTRICAL KNOCKOUTS MIN .
- 4) ACCOMMODATE ANY PROJECTOR MOUNT WITH 1-1/2" NPT (NATIONAL PIPE THREAD) PIPE.
- 5) FIT WITHIN 1 CEILING GRID TILE.

- 1) SUPPORT A PROJECTOR WITH A MIN LOAD CAPACITY OF 50 LBS.
- 2) ROLL PLUS OR MINUS 20 DEGREES.
- 3) PITCH PLUS OR MINUS 15 DEGREES.
- 4) ACCOMMODATE ANY PROJECTOR THAT WILL WORK WITH 1-1/2" NPT PIPE.
- 5) SWIVEL 360 DEGREES
- 6) MATERIAL SHALL BE STEEL.
- 7) GROOVED COUPLING 1 1/2" NPT STEEL HALF PIPE.

- 1) RECESSED CEILING MOUNTED
- 2) WITH WHITE EXTRUDED ALUMINUM CASE
- 3) PROVIDE TAB GUIDED CABLE SYSTEM FOR EVEN LATERAL TENSION AND FLAT SURFACE
- 4) VIEWING SURFACE FLAME AND MILDEW RESISTANT
- 5) WITH ELECTRICALLY OPERATED 110-120 V, 60HZ 3 WIRE
- 6) MOTOR MOUNTED INSIDE SCREEN ROLLER
- 7) WITH A 3-POSITION WHITE WALL SWITCH
 - A HDTV FORMAT (16:9) PROJECTION SCREENS, SIZE 54"H X 96"W (LOW VOLTAGE CONTROLLER)
 - B HDTV FORMAT (16:9) PROJECTION SCREENS, SIZE 65"H X 116"W (LOW VOLTAGE CONTROLLER)

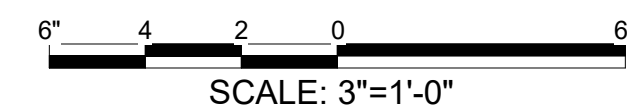
SCALE: 3"=1'-0"



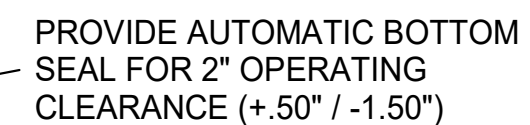
SCALE: 1 1/2"=1'-0"

6" 4 2 0 6
SCALE: 3"=1'-0"

SCALE: 3"=1'-0"

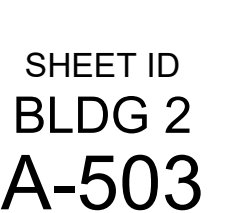


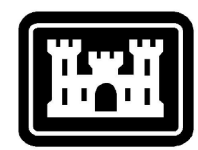
SCALE: 3"=1'-0"



6" 4 2 0 6
SCALE: 3"=1'-0"

SCALE: 3"=1'-0"





**US Army Corps
of Engineers ®**

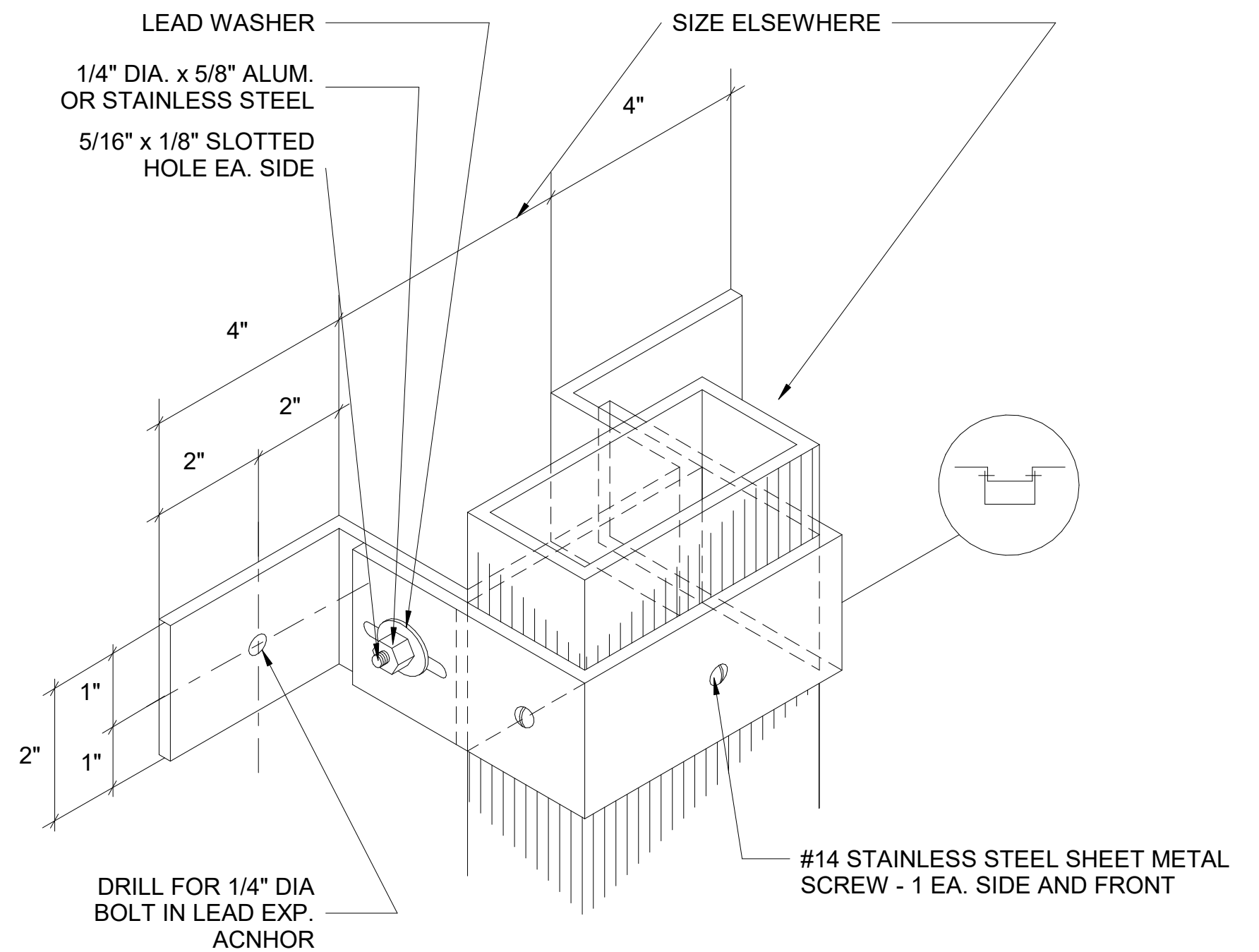
[illegible]

U.S. ARMY CORPS OF ENGINEERS SAVANNAH DISTRICT 100 W. OGLETHORPE AVE. SAVANNAH, GA 31401	DESIGN BY: T ODELL	ISSUE DATE: JUNE 2023
	DRAWN BY: T ODELL	SOLICITATION NO.: W912HN-23-B-3001
	CHECKED BY: P. SULLIVAN	CONTRACT NO.: -
	SUBMITTED BY: J. DEACON	CATEGORY CODE: 178-65-01
	SIZE: ANSI D	FILE NAME:

FORT LIBERTY, NORTH CAROLINA
AUTOMATED MULTIPURPOSE TRAINING RANGE (MPTR)
FY23 PN 96182
VOLUME 2 - BUILDING

AAR SCHEDULES

SHEET ID
BLDG 2
A-601

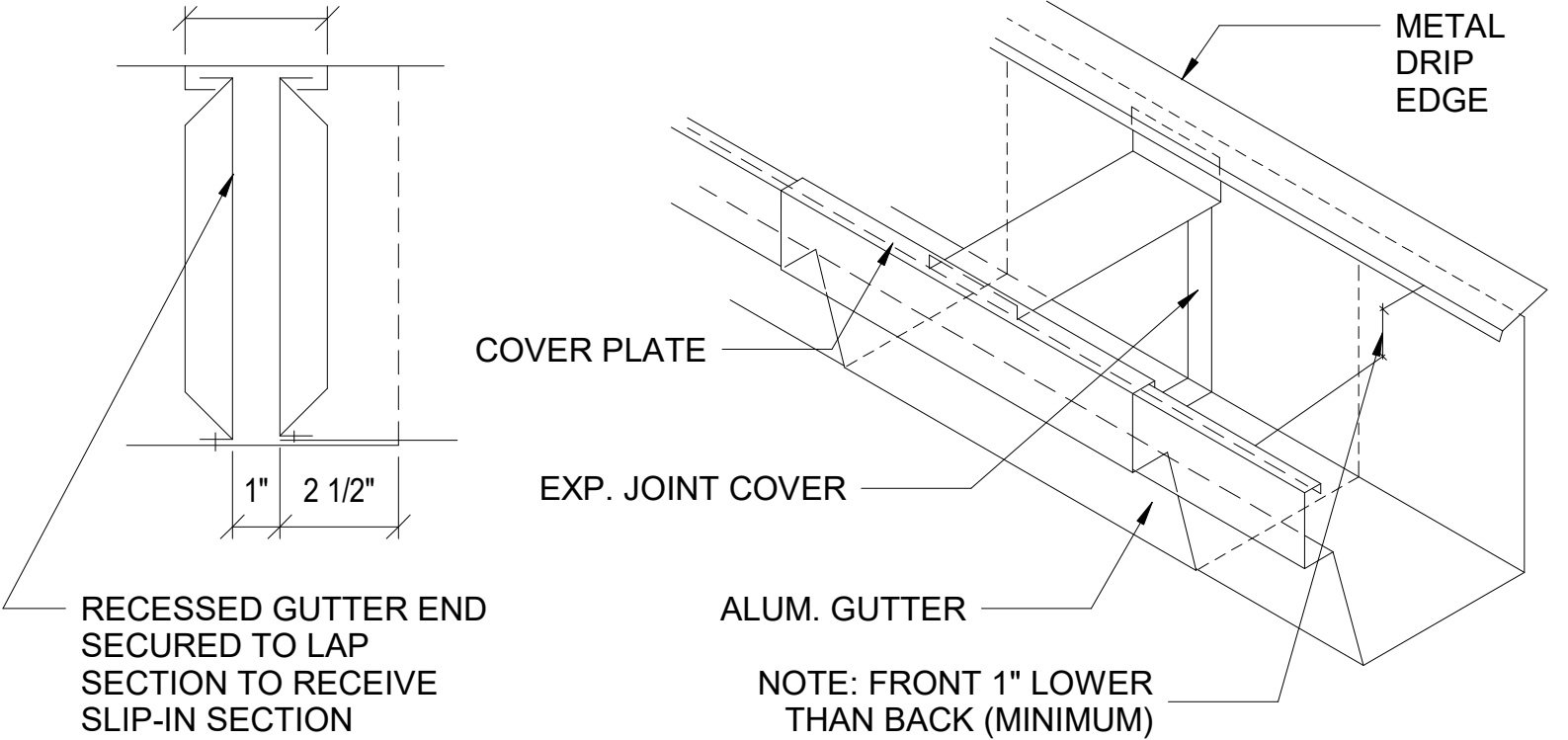


6" 4" 2" 0 6"

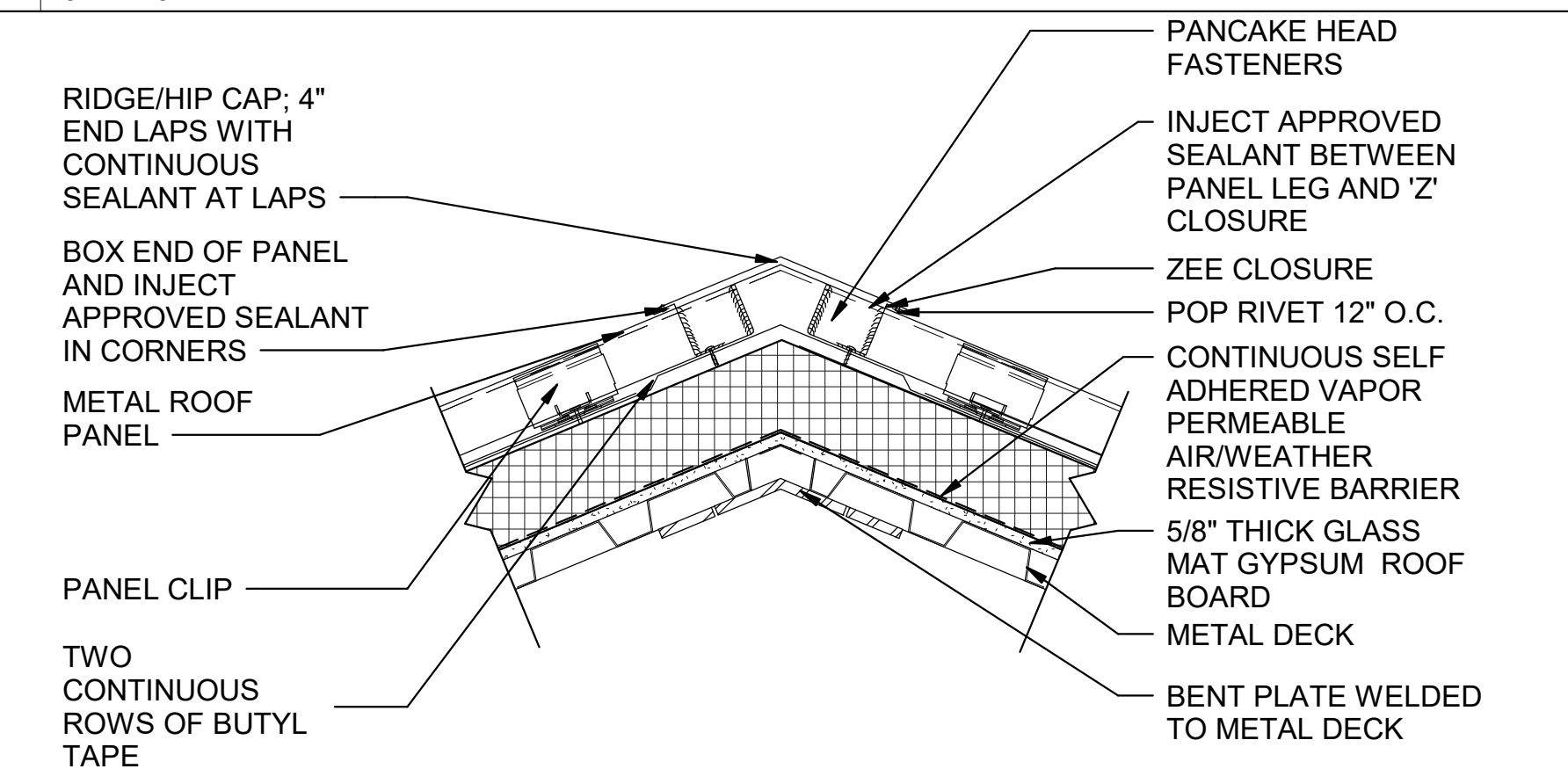
SCALE: 3"=1'-0"

3" 2" 1" 0 3"

SCALE: 6"=1'-0"



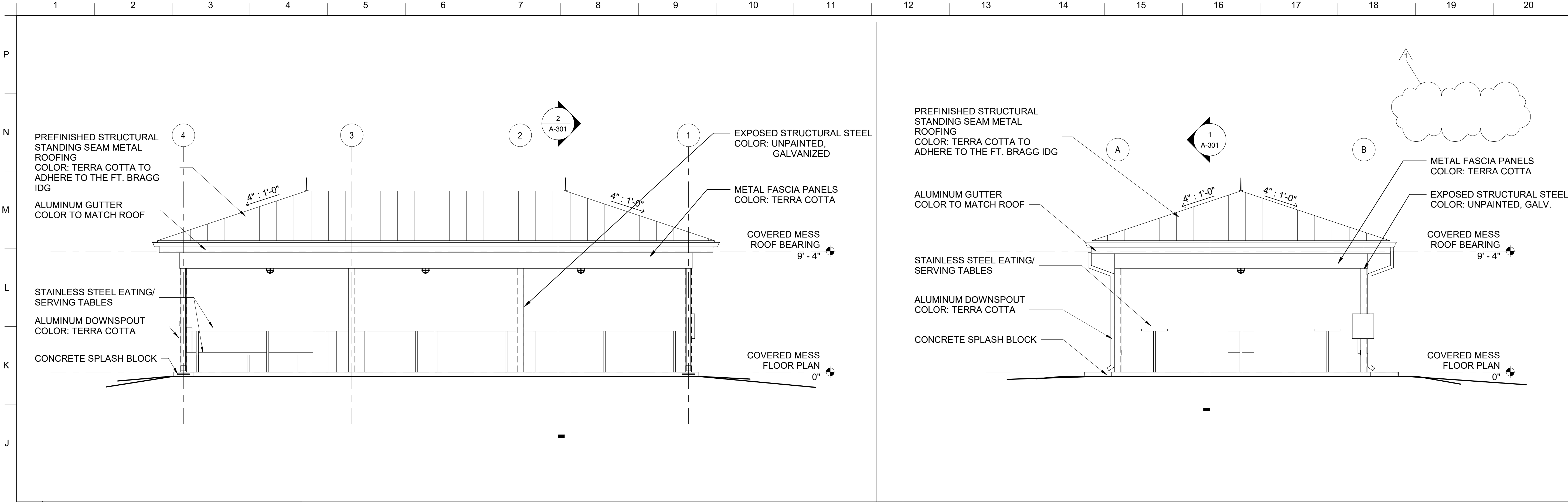
SCALE: 3"=1'-0"



1 0 1
SCALE: 1 1/2"=1'-0"

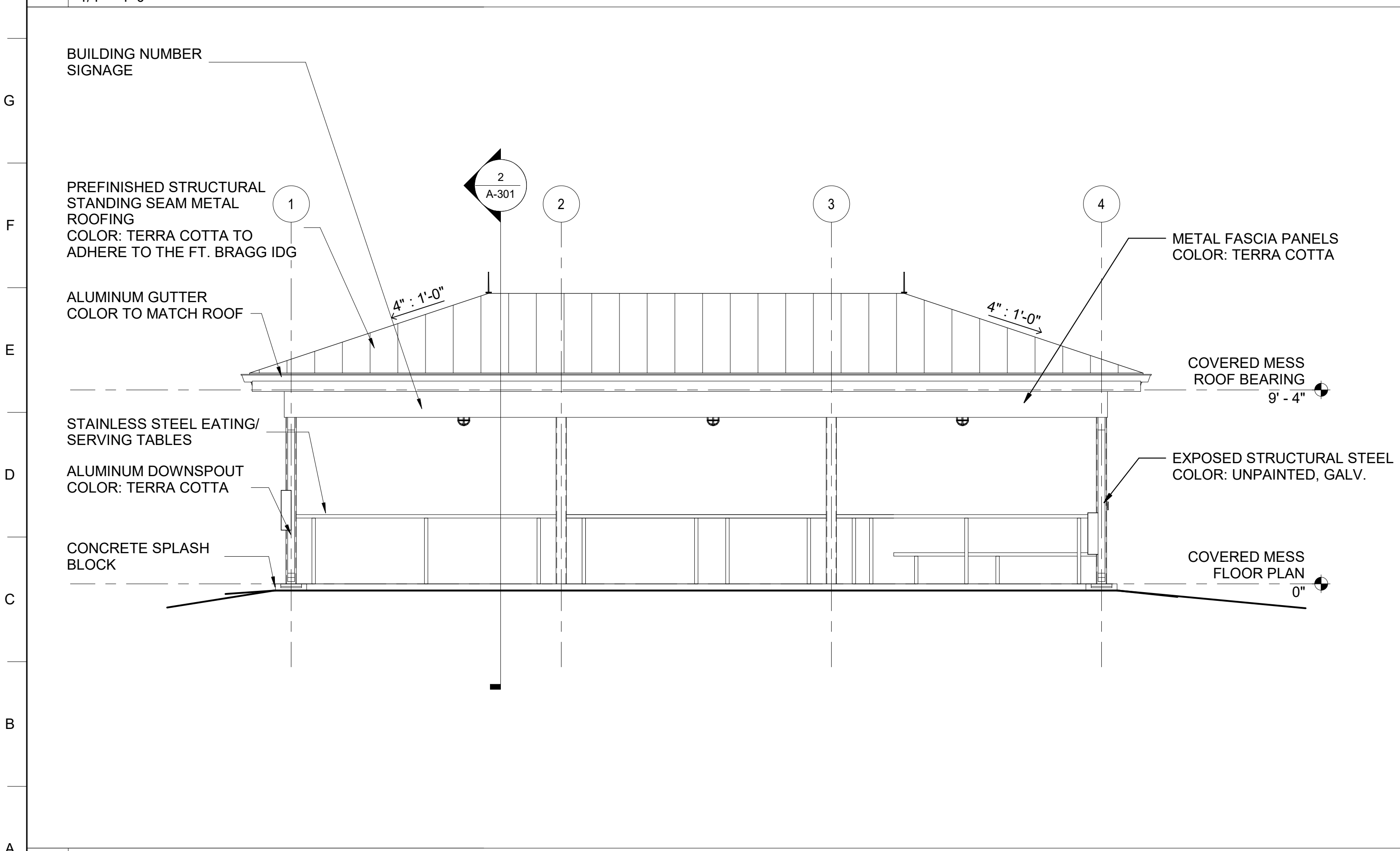
SCALE: 1 1/2"=1'-0"



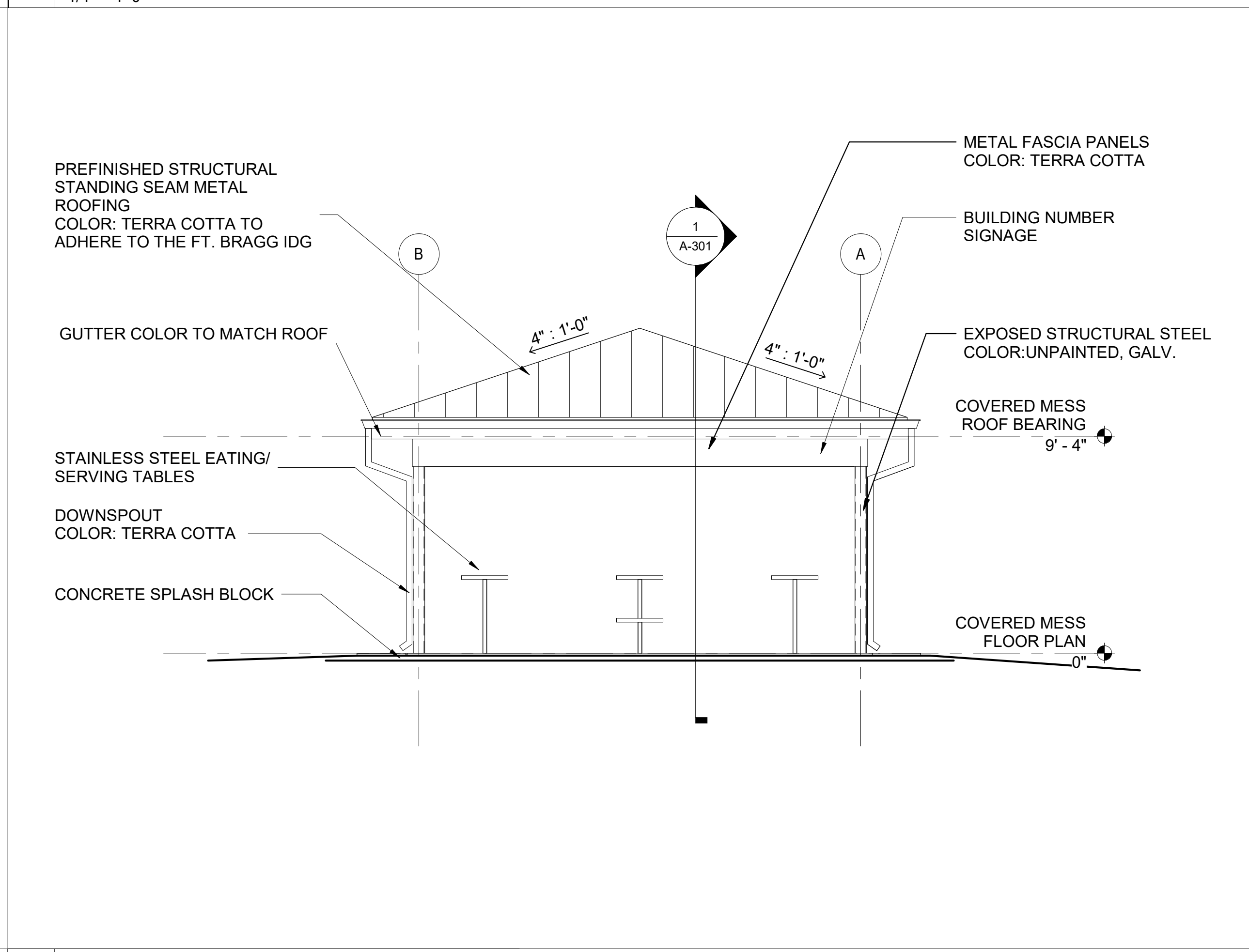


1 COVERED MESS SOUTH ELEVATION
1/4" = 1'-0"


3 COVERED MESS EAST ELEVATION
1/4" = 1'-0"



2 COVERED MESS NORTH ELEVATION
1/4" = 1'-0"



4 COVERED MESS WEST ELEVATION
1/4" = 1'-0"



US Army Corps
of Engineers ®

MARK	1	2	3	4	5	6	7	8	9	10	11	12	13	14	15	16	17	18	19	20
DATE	04 AUG 2023																			
DESCRIPTION	REVISED IN ACCORDANCE WITH AMENDMENT 0002																			

ISSUE DATE:
JUNE 2023

SOLICITATION NO.:
W912 HN-23-B-3001

CONTRACT NO.:
-

CATEGORY CODE:
17B-65-01

FILE NAME:
ANSI.D

DESIGN BY:
T. ODELL

DRAWN BY:
T. ODELL

CHECKED BY:
P. SULLIVAN

SUBMITTED BY:
J. DEACON

U.S. ARMY CORPS OF ENGINEERS
SAVANNAH DISTRICT
100 W. OGLETHORPE AVE.
SAVANNAH, GA 31401

FORT LIBERTY, NORTH CAROLINA
AUTOMATED MULTIPURPOSE TRAINING RANGE (MPTTR)
FY23, PN 95162
VOLUME 2 - COVERED MESS, BUILDING 5

COVERED MESS ELEVATIONS

SHEET ID
BLDG 5
A-201

Plot Date: 8/9/2023 11:59:39 AM
File Path: C:\Users\KGENXT09\Documents\FY23_PN95162_MPTR-COMMESS_ARCH_R21_KGENXT09.rvt
READY TO ADVERTISE (RTA)