

ADDENDUM NUMBER: THREE

PROJECT: New Field House – Northern Nash High School
4230 Green Hills Road
Rocky Mount, North Carolina 27804

PROJECT NO: 21038

DATE: May 22, 2023

OWNER: Nash County Public Schools
903 Eastern Ave
Nashville, North Carolina 27856

ARCHITECT: Oakley Collier Architects, P.A.
109 Candlewood Road
Rocky Mount, North Carolina 27804
(252) 937-2500

PREVIOUSLY ISSUED: Addendum One and Two

TO ALL CONTRACTORS:

This Addendum is hereby made a part of the Contract Documents to the same extent as if originally included therein. This Addendum must be acknowledged on the Form of Proposal and shall be placed with the Contract Documents.

Drawings and Project Manual dated April 24, 2023, for this project are hereby modified, corrected, or supplemented as follows:

General

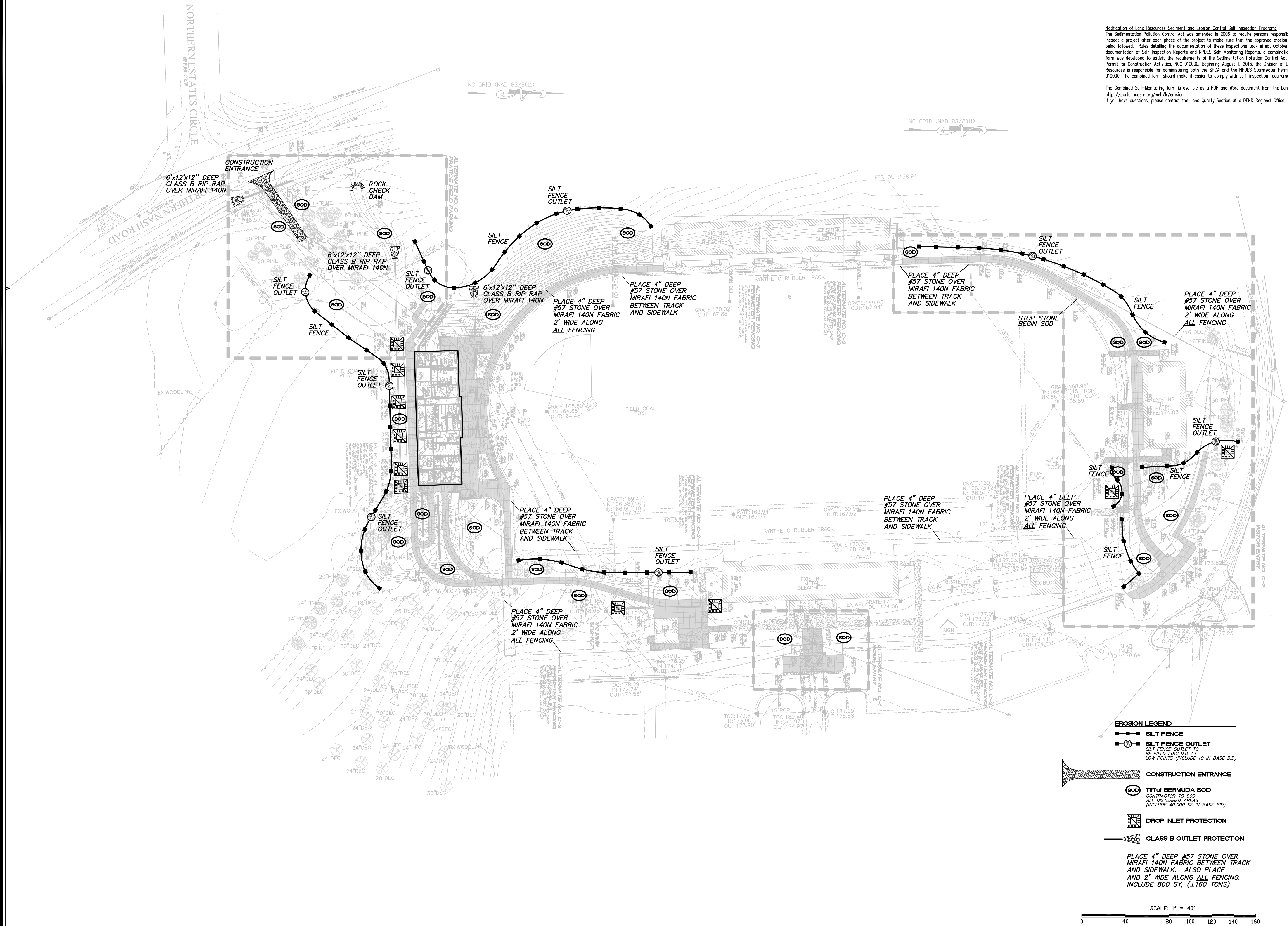
The Bid Date shall be changed from May 23 to May 30. Bid time and location remain unchanged.

Drawings

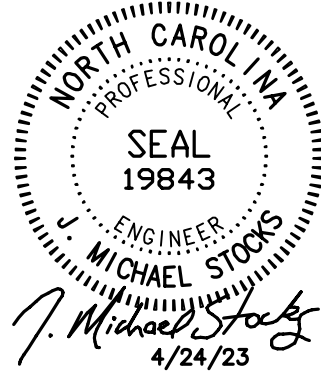
Item 1 Change **CE-09**
Add the attached sheet in its entirety.

End of Addendum

Copyright © 2022 Oakley Collier Architects. These drawings are of the property of the Architect for use under his supervision. No reproduction or other use is allowed without permission.



Notification of Land Resources Sediment and Erosion Control Self-Inspection Program:
The Sedimentation Pollution Control Act was amended in 2006 to require persons responsible for land disturbing activities inspect a project after each phase of the project to make sure that the approved erosion and sedimentation control plan is being followed. Rules detailing the documentation of these inspections took effect October 1, 2010. To simplify documentation of Self-Inspection Reports and NPDES Self-Monitoring Reports, a combination form is now available. The new form was developed to satisfy the requirements of the Sedimentation Pollution Control Act and the NPDES Stormwater Permit for Construction Activities, NC 010000. Beginning August 1, 2013, the Division of Energy, Mineral, and Land Resources is responsible for administering both the SPCA and the NPDES Stormwater Permit for Construction Activities, NC 010000. The combined form should make it easier to comply with self-inspection requirements.
The Combined Self-Monitoring form is available as a PDF and Word document from the Land Quality web site, <http://portal.ncdenr.org/web/it/erosion>.
If you have questions, please contact the Land Quality Section at a DENR Regional Office.



STOCKS ENGINEERING
801 EAST WASHINGTON STREET
NASHVILLE, N.C. 27855
P.O. BOX 1108
PHONE: (252) 459-8196
WWW.STOCKSENGINEERING.COM

- EROSION LEGEND**
- SILT FENCE
 - SILT FENCE OUTLET
 - CONSTRUCTION ENTRANCE
 - TITIV BERMUDA SOD
 - DROP INLET PROTECTION
 - CLASS B OUTLET PROTECTION

PLACE 4" DEEP #57 STONE OVER MIRAFI 140N FABRIC BETWEEN TRACK AND SIDEWALK. ALSO PLACE AND 2' WIDE ALONG ALL FENCING. INCLUDE 800 SY, (±160 TONS)

SCALE: 1" = 40'

OAKLEY COLLIER ARCHITECTS
OCA ARCHITECTS
109 Candlewood Road, Rocky Mount, NC 27804 (P) 252.937.2500
1111 Haynes Street, Suite 109, Raleigh, NC 27604 (P) 919.985.7700

NEW FACILITY FOR
FIELD HOUSE
NORTHERN NASH HIGH SCHOOL
4230 GREEN HILLS ROAD
ROCKY MOUNT, NORTH CAROLINA

GENERAL NOTE: Prior to construction start. Contractor shall verify & be responsible for all Dimensions.	
Revisions	
Date 4/24/23	Project No. 21038
Drawn By -	Sheet No. CE-09
Checked By -	Sheet Title EROSION CONTROL PLAN