

# ITB # 26-408 Hampstead Library Construction Services

## Addendum 3

December 15, 2025

To: All Plan Holders

From: Scott Spike



---

### General Items

1. Bid date and time remain unchanged.
2. Invitation to Bid, paragraph A: The last sentence is revised to read, "A 5% Bid Bond is required." The bid bond is not required to be in a separate envelope from the sealed proposal.
3. The pre-bid meeting minutes were included in Addendum 1; paragraph VIII of the minutes is revised to read as follows:
  - VIII. The following are a few key items:
    - A. Bid Packages should include items listed in Instructions to Bidders.
    - B. Sealed Bid Packages are due by the date, time, and location indicated on the Invitation to Bid, unless modified by addendum.
    - C. Single Prime Contract, Bidders must be properly licensed under NCGS, Chapter 87.
    - D. 5% Bid Bond is required.
    - E. Successful bidder will be required to provide 100% Performance and Payment Bonds.
    - F. Owner reserves the right to reject any or all bids and to waive informalities.
4. The Contractor is responsible for fees for the building permit and sign permit. A copy of the current Pender County Permitting & Inspections Fee Schedule is attached to this addendum.
5. The Contractor is responsible for tap fees. The water utility is Pender County Utilities, and the sewer utility is Pluris.
6. Water and sewer impact fees have already been paid.

### Specification Items

1. Section 03 3000 – Cast-In-Place Concrete: Revise paragraph 2.7, B to read as follows:
  - B. Granular Fill: Provide Aggregate Base Course/Capillary Break materials as indicated in the geotechnical report. A copy of this report is included in the project manual.
2. Section 05 1200 – Structural Steel Framing; revise paragraph **1.7-A & B** to read as follows:
  - A. Fabricator Qualifications: A qualified fabricator that participates in the AISC Quality Certification Program and is designated an AISC-Certified Plant Category STD. In lieu of fabricator AISC certification, it is acceptable for the Contractor to hire a licensed third-party steel inspector to perform shop inspection and oversee quality control procedures during fabrication, abiding by AISC requirements.

## Pender County Library, Hampstead Branch

### Addendum 3

- B. Installer Qualifications: A qualified installer who participates in the AISC Quality Certification Program or abides by AISC requirements.
- 3. Section 10 1423 – Panel Signage:
  - a. Paragraph **2.04-B-1**, revise to read as follows:
    - 1. Allow for one emergency evacuation map, 10 inches high x 12 inches wide. Location to be determined during construction.
  - b. Paragraph **2.04-C-1**, revise to read as follows:
    - 1. Dimensions and number of panels: Allow for one recognition/donor panel, 24 inches high x 18 inches wide. Location to be determined during construction.
- 4. Section 10 1433 – Illuminated Cabinet Signage; revise as noted below:
  - a. Paragraph **2.01-B-1**, revise to read as follows:
    - 1. Cabinet Sign Frames: Extruded-aluminum frames mitered with concealed anchors and welded, extrusions 12 inches wide, length and width of sign as indicated on drawings. Coordinate attachment points on structural steel posts.
  - b. Paragraph **2.01-C-1**, revise to read as follows:
    - 1. Cabinet Sign Frames: Extruded-aluminum frames mitered with concealed anchors and welded, extrusions 6 inches wide, fabricated to shape indicated on drawings.
- 5. Section 23 0500 – Heating and Air Conditioning, Article 23 0505 Packaged Heat Pumps, add the following clarification:
  - a. For SZVAV units, unit's supply air volume shall be variable by changing airflow in stages to match staging of the unit's compressors.

#### Drawing Items

- 1. In the drawing index on sheets G1.0 and C0.0, please disregard reference to sheet C3.0. This sheet is not included in the drawing set and is not needed.
- 2. Sheet 5.0 Landscape Plan is replaced, see attached revised plan.
- 3. Sheet U5.1 Site Utility is replaced, see attached revised plan.
- 4. Sheet U9.5 Pluris Details 1 is replaced, see attached revised plan.
- 5. Sheet M3.0 Mechanical Control Diagrams, please add the following clarification:
  - a. Packaged Heat Pump Unit - Single Zone VAV & OA Economizer (PHP-1 & 6): Update sequence of operation A. Occupied 3. for Supply Air Fan **to adjust speed in stages to match compressor staging** to maintain space temperature setpoint.

#### Clarifications

- 1. All exterior window and door frames are curtain wall, except for the automatic entrances.
- 2. County's vendor to run fiber from handhole to Data Room D1, see Electrical drawings for info on hand hole and conduit to Data Room.

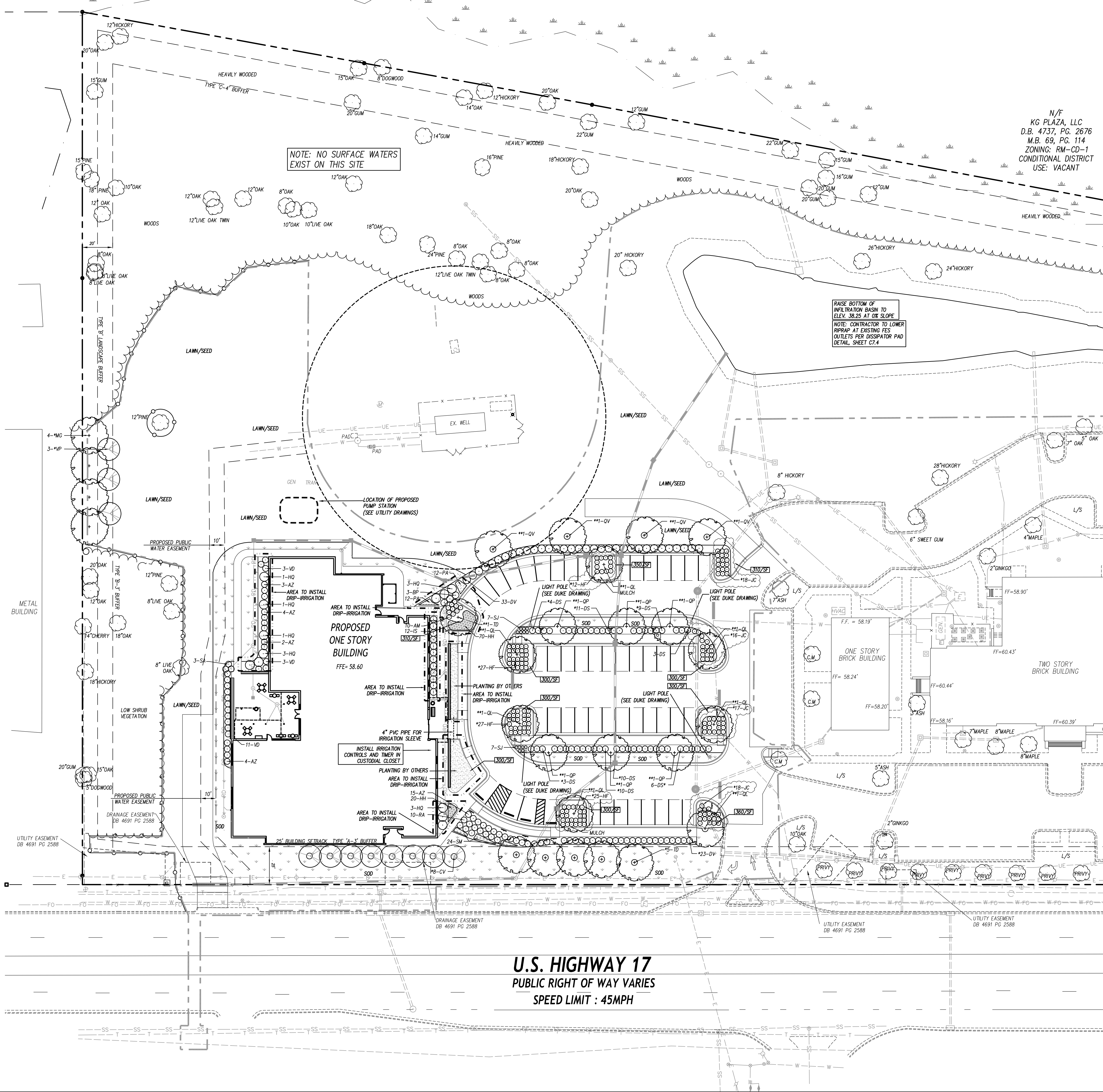
#### Approved Substitutions

The following manufacturers have been reviewed and accepted:

- 1. None at this time.

Pender County Library, Hampstead Branch  
Addendum 3

**End of Addendum 3**



LANDSCAPE REQUIREMENTS CALCULATIONS

REQUIRED ALONG U.S. HIGHWAY 17  
BUFFER A-3: 1 CANOPY TREE AND 2 UNDERSTORY TREES WITH AT LEAST 98% LAWN COVERAGE PER 100/LF  
PROVIDED ALONG U.S. HIGHWAY 17: (\*) PER 425/LF  
(3) CANOPY TREES  
(8) UNDERSTORY TREES  
REQUIRED ALONG SIDE YARD ALONG EASTERN BOUNDARY  
BUFFER B-3: 1 CANOPY TREE AND 2 UNDERSTORY TREES WITH AT LEAST 98% LAWN COVERAGE PER 100/LF  
PROVIDED ALONG SIDE YARD ALONG EASTERN BOUNDARY  
TOTAL BUFFER LENGTH = 570/LF  
PROVIDING 94/LF  
REMAINING 476/LF CREDIT FOR EXISTING VEGETATION  
(4) CANOPY TREES  
(3) UNDERSTORY TREES  
REQUIRED ALONG REAR BUFFER EXISTING WOODS TO REMAIN  
1000/SF AREAS OF SQUARE FOOTAGE ON PARKING LOT ISLAND PER PENDER COUNTY UDO

PLANT LIST

KEY	QTY	PLANT NAME	MIN. SIZE	REMARKS	REQ.
CANOPY TREES					
**QL	7	OVERCUP OAK <i>Quercus lyrata</i>	2.5" CAL. 10' HT. MIN.	B&B: STRAIGHT TRUNK FULL CROWN	**PARKING
**QP	6	WILLOW OAK <i>Quercus phellos</i>	2.5" CAL. 10' HT. MIN.	B&B: STRAIGHT TRUNK FULL CROWN	**PARKING
**QV	4	SOUTHERN LIVE OAK <i>Quercus virginiana</i>	2.5" CAL. 10' HT. MIN.	B&B: STRAIGHT TRUNK FULL CROWN	**PARKING
**MG	4	SOUTHERN MAGNOLIA <i>Magnolia grandiflora</i>	2.5" CAL. 10' HT. MIN.	B&B: STRAIGHT TRUNK FULL CROWN	**BUFFER A
**TD	6	BALD CYPRESS <i>Taxodium distichum</i>	2.5" CAL. 10' HT. MIN.	B&B: STRAIGHT TRUNK FULL CROWN	**BUFFER A
UNDERSTORY TREES					
*CV	8	AMERICAN FRINGE TREE <i>Chionanthus virginicus</i>	1.5" CAL. 8' HT. MIN.	B&B: STRAIGHT TRUNK FULL CROWN	**BUFFER A
*VP	7	BLACKHAW <i>Viburnum prunifolium</i>	1" CAL. 6' HT. MIN.	B&B: STRAIGHT TRUNK FULL CROWN	**BUFFER A
SHRUBS					
AM	10	BLACK CHOKEBERRY <i>Aronia melanocarpa 'Low Scope Mound'</i>	12"-15" HT. CONT.	FULL PLANTS	
AZ	28	AUTUMN MOONLIGHT ENCORE AZALEA <i>Azalea x 'Autumn Moonlight'</i>	18"-24" HT. CONT.	FULL PLANTS	
BP	3	PUSTER PINKER BUTTERFLY BUSH <i>Buddleia 'Puster Pinker'</i>	10"-24" HT. CONT.	FULL PLANTS	
DV	56	DISTYLUM 'Vintage Jade' <i>Distylium 'Spring Frost'</i>	18"-24" HT. CONT.	FULL PLANTS	
DS	53	DISTYLUM 'Spring Frost' <i>Distylium 'Spring Frost'</i>	18"-24" HT. CONT.	FULL PLANTS	**PARKING SCREEN
HQ	12	ALICE OAKLEAF HYDRANGEA <i>Hydrangea quercifolia 'Alice'</i>	24"-36" HT. CONT.	FULL PLANTS	
*HF	91	'ST. JOHN'S WORT' <i>Hypericum frondosum 'Sunburst'</i>	12"-15" HT. CONT.	FULL PLANTS	
*JS	12	'SCORPIO ANISE' <i>Wittium 'Scorpio'</i>	24" HT. CONT.	FULL PLANTS	
*JC	69	'PARSON'S JUNIPER' <i>Juniperus chinensis 'Parsoni'</i>	12"-15" HT. CONT.	FULL PLANTS	
RA	10	COASTAL AZALEA <i>Rhododendron atlanticum</i>	18"-24" HT. CONT.	FULL PLANTS	
SA	3	DWARF PALMETTO <i>Sabal Minor</i>	12"-18" HT. CONT.	FULL PLANTS	
SJ	14	MAGIC CARPET SPIRAEA <i>Spiraea japonica 'Magic Carpet'</i>	12"-15" HT. CONT.	FULL PLANTS	
VD	17	DAVID VIBURNUM <i>Viburnum davidii</i>	18"-24" HT. CONT.	FULL PLANTS	
GRASSES / PERENNIALS					
HH	90	HAPPY RETURN DAYLILY <i>Emerocallis 'Happy Returns'</i>	12"-15" HT. CONT.	FULL PLANTS MATCHING: 2' O.C.	
PA	24	DWARF FOUNTAIN GRASS <i>Pennisetum alopecuroides 'Cassini'</i>	12"-18" HT. CONT.	FULL PLANTS MATCHING: 2' O.C.	
SM	24	HOT LIPS SALVIA <i>Salvia microphylla 'Hot Lips'</i>	12"-15" HT. CONT.	FULL PLANTS MATCHING: 2' O.C.	
TIF-TUF BERMUDA SOD					
SEE DETAIL SHEET C-7.1					
TREE PROTECTION FENCE, SEE EROSION CONTROL PLANS					
SEE SHEET C7.1 FOR DETAILS AND ADDITIONAL INFORMATION. GRAPHIC SYMBOLS SUPERSEDE WRITTEN QUANTITIES WHERE DISCREPANCIES OCCUR. * PLANTS REQUIRED BY MUNICIPALITY CODE/AUD.					
CONTRACTOR TO PROVIDE 18" DEEP 50/50 MIX OF TOPSOIL AND ORGANIC COMPOST. DRIP IRRIGATION TO BE INSTALLED IN THESE AREAS. PLEASE SEE SPEC FOR ADDITIONAL INFORMATION. PLANTS AND MULCH PROVIDED BY OTHERS.					

SAWYER  
SHERWOOD  
& ASSOCIATE  
ARCHITECTURE

124 Market Street  
Wilmington, NC 28401  
910 762-0892  
s2a3.com

CLH DESIGN, P.A.

400 Regency Forest Drive  
Suite 100  
Wilmington, NC 28405  
Phone: (910) 318-4716  
Fax: (910) 318-5166  
LA: C-198  
P.E. C-1985

CHEATHAM AND ASSOCIATES, P.A.  
CONSULTING ENGINEERS

3412 ENTERPRISE DRIVE  
WILMINGTON, NORTH CAROLINA 28405  
PHONE: (910) 452-4210  
FAX: (910) 452-4211  
OFFICE@CHEATHAMPA.COM  
WWW.CHEATHAMPA.COM  
NC LICENSE# C-1073

WOODS ENGINEERING

Consulting Structural Engineers

254 North Front Street  
Suite 201  
Wilmington, NC 28401  
Phone: 910.343.8007  
Fax: 910.343.8088  
www.woodseng.com

ReThinking  
Libraries

508 Villanova Ct  
Fort Collins, CO 80525  
317-509-3268  
rethinkinglibraries.org

NORTH CAROLINA  
REGISTERED LANDSCAPE ARCHITECT  
No. 20455  
11-07-25

Pender County  
Library  
Hampstead Branch

15146 US Hwy 17  
Hampstead, NC 28443

Construction Drawings

Issue Date: November 7, 2025

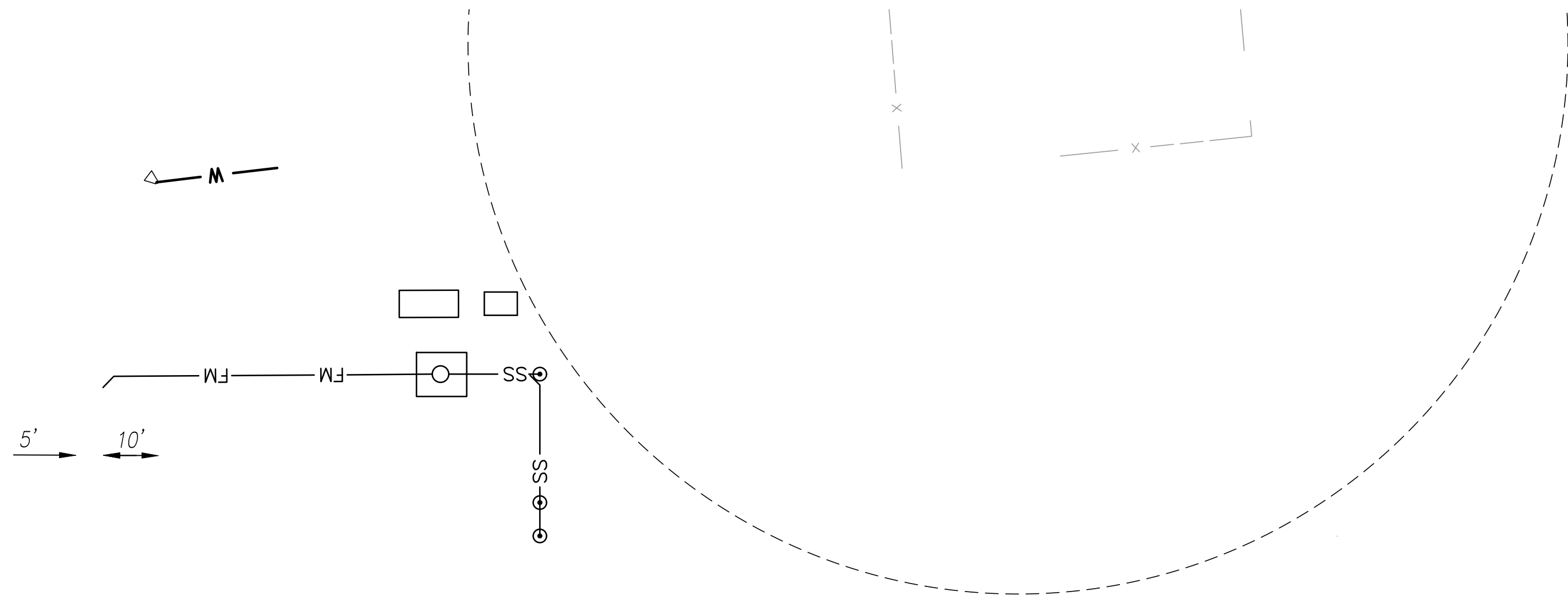
Landscape Plan

Rev.	Date	Notes
1	12/9/25	TRC COMMENTS

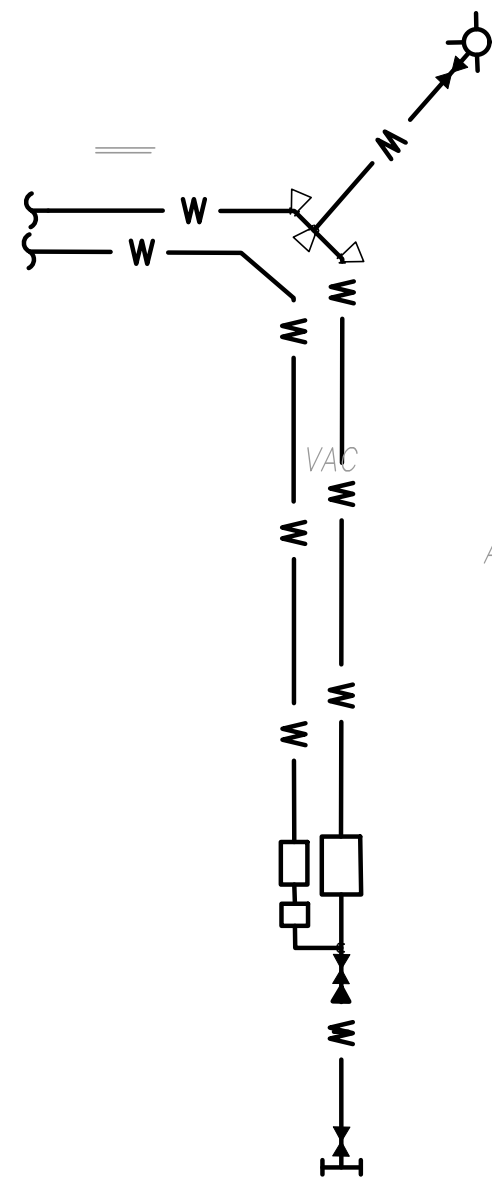
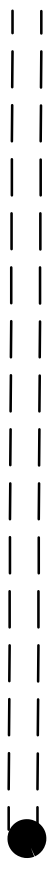
C5.0

© 2025 Sawyer Sherwood & Associate - All Rights Reserved

U.S. HIGHWAY 17  
PUBLIC RIGHT OF WAY VARIES  
SPEED LIMIT : 45MPH



10' 10'



AC

